



Click to call from Outlook contacts' list

Integrate Outlook and Zycoo IP PBX with xtelsio TAPI

1. Download and install xtelsio TAPI

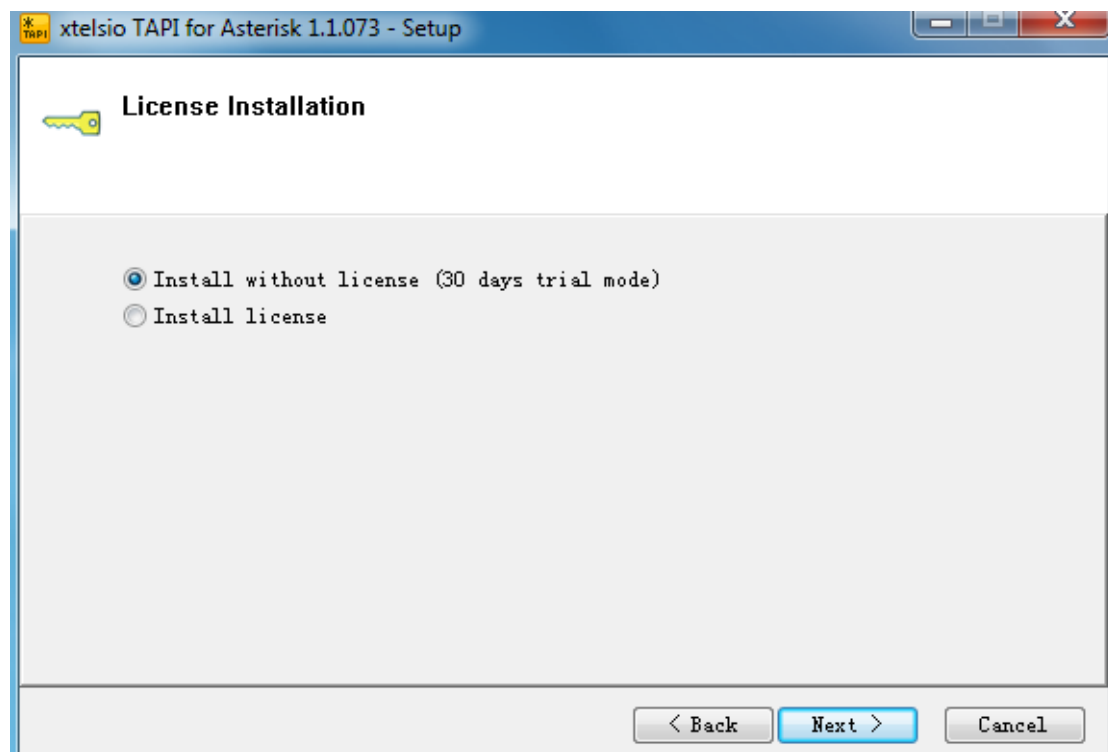
You can download xtelsio TAPI here:

http://www.xtelsio.com/download/xtelsio_TAPI_for_Asterisk_setup.zip

It's a free trial for 30 days, to get a full feature version please visit:

<http://www.xtelsio.com/>

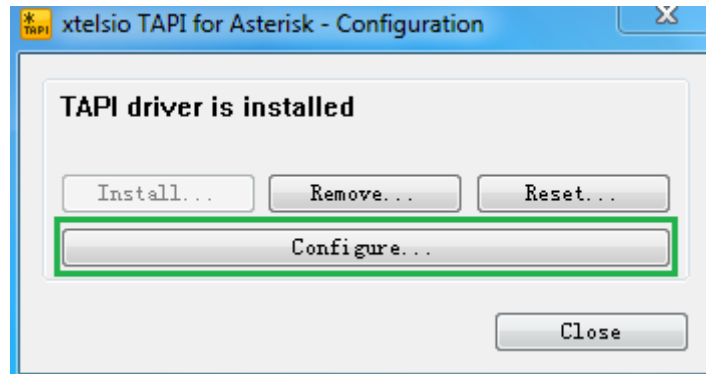
During installation, you will see a License Installation window like below:



If you got the license please choose Install license option, if not please proceed as the snapshot shown.

2. Configure xtelsio TAPI to integrate outlook and Zycoo IP PBX

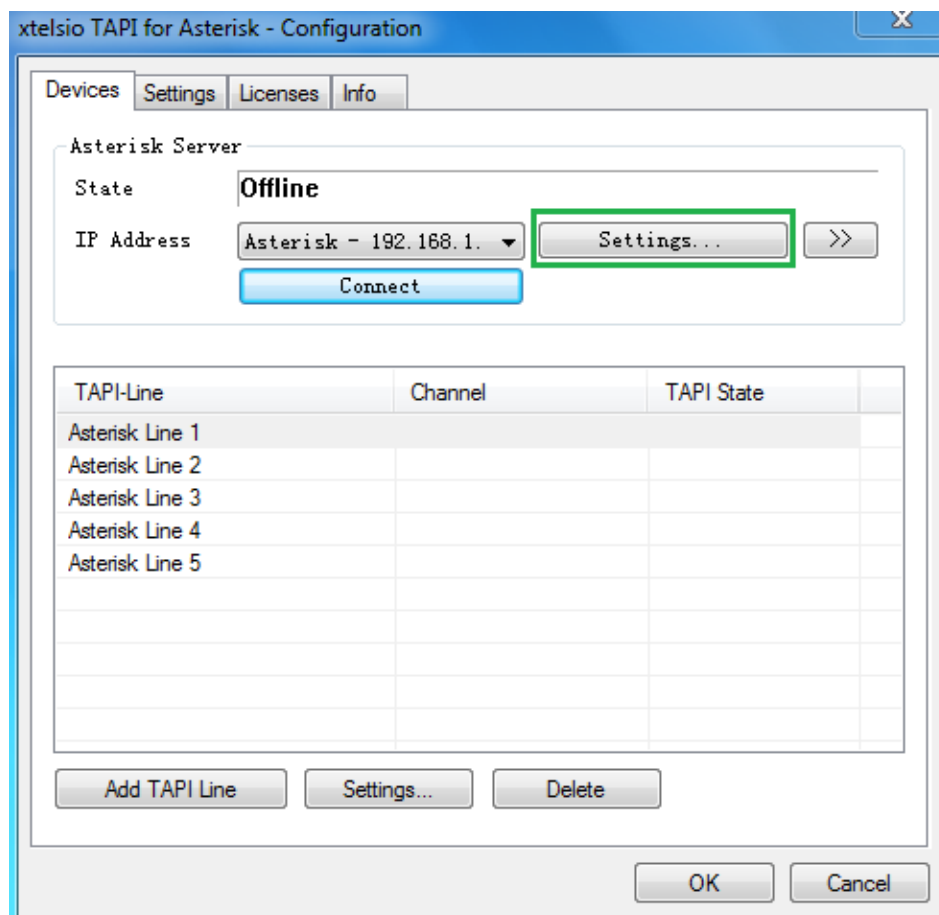
After installation, then you can run xtelsio APTI:



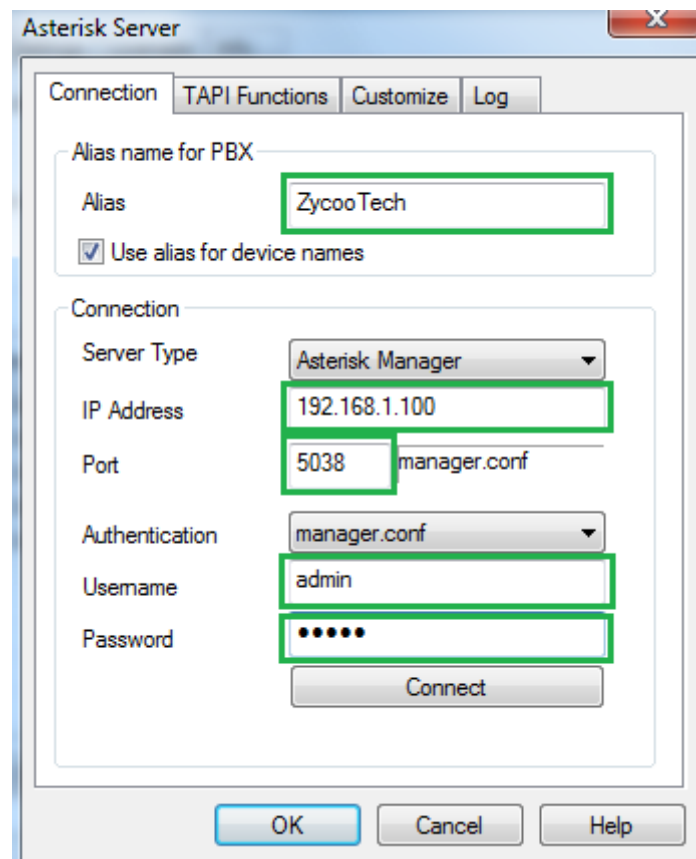
Please press Configure button to make the configurations.

2.1 Connect to Zycoo IP PBX

To connect with Zycoo IP PBX please follow the steps below:



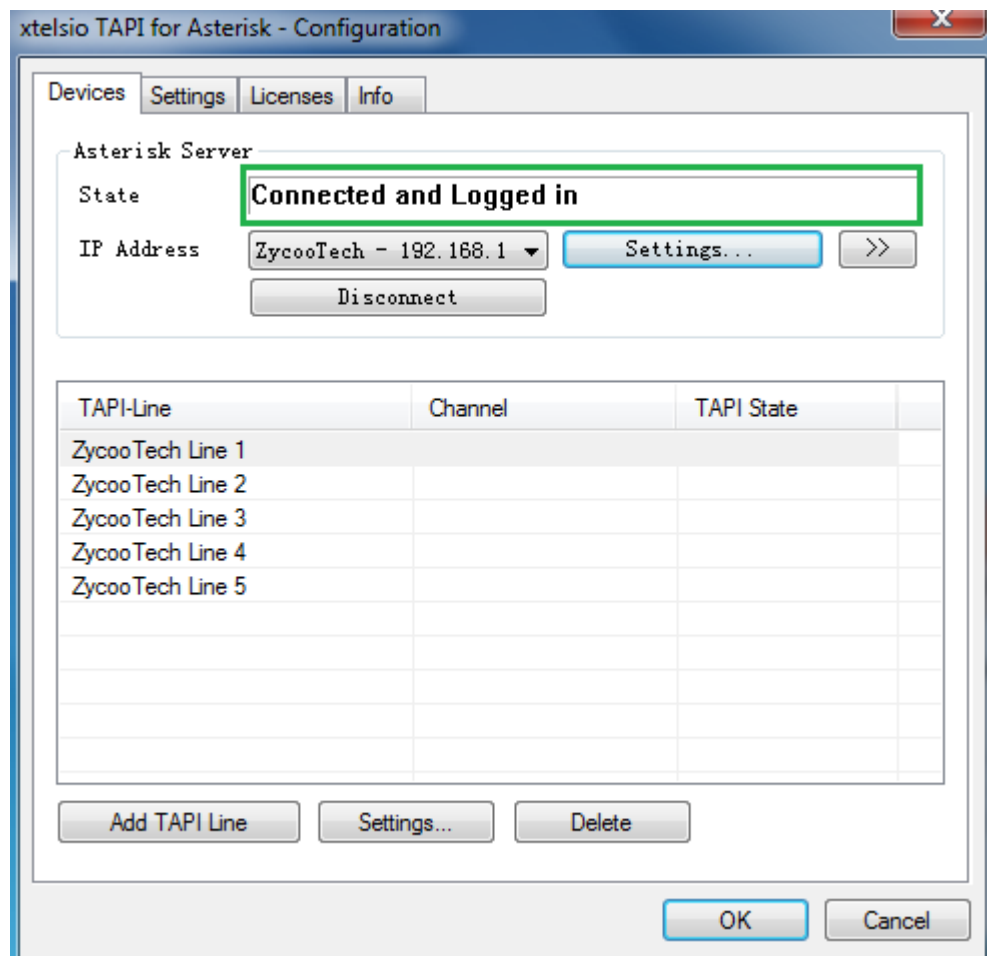
Here we will connect to Zycoo IP PBX via AMI(Asterisk Management Interface).



Credentials you need to fill in with:

- Alias: ZycooTech(also you can define it yourself)
- IP Address: IP address of Zycoo IP PBX(depends on your real network environment)
- Port: 5038(default AMI port, can be changed)
- Username: admin(can be changed)
- Password: admin(can be changed)

After this please press Connect button to connect to Zycoo IP PBX.



This means you have successfully connected to Zycoo IP PBX.

2.2 User configurations

After this you'll need to configure Asterisk TAPI line, please choose a line then click Settings button to configure it:

- Channel: SIP/823(823 should be you extension number), it also can be: IAX/823(if you are using extension number 823 with IAX2 protocol), or: dahdi/1(if extension number 823 is an analog phone on the first FXS port)
- Your name: username of extension number 823(e.g.: John Doe)

Asterisk TAPI Line - Configuration

Asterisk Server

State: **Connected and Logged in**

IP Address: **ZycooTech - 192.168.1** [Settings...] [Disconnect] [>>]

Asterisk TAPI Device

Example: SIP/200

Channel: **SIP/823** [Extended...]

Your phone number: **823**

☒ Use this extension number for call detection too

Parameters for TAPI call setup:

Special Device: **Standard** [Settings...]

CallerID: **Standard** [Settings...]

Your name: **John Doe**

☐ Context

☐ Use other Channel

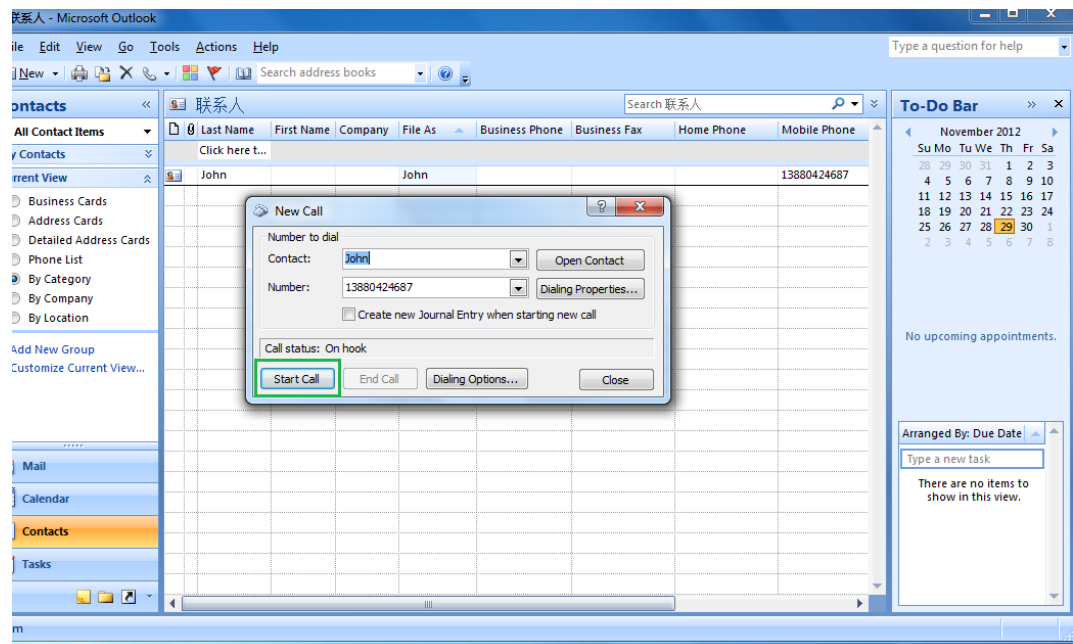
Status / Error Messages

[Help] [OK] [Cancel]

Asterisk TAPI Line Configuration

3. Click to Call

Right click on the contact in outlook contact list you want to call, and select “Call Contact..” then a new call window will pop out, click the “Start Call” button to establish the call. And your extension will ring, after you picking up your extension the call will go out to the contact.



Integrate Outlook and Zycoo IP PBX with another TAPI OutCALL

1. Download and install OutCALL

You can download OutCALL here:

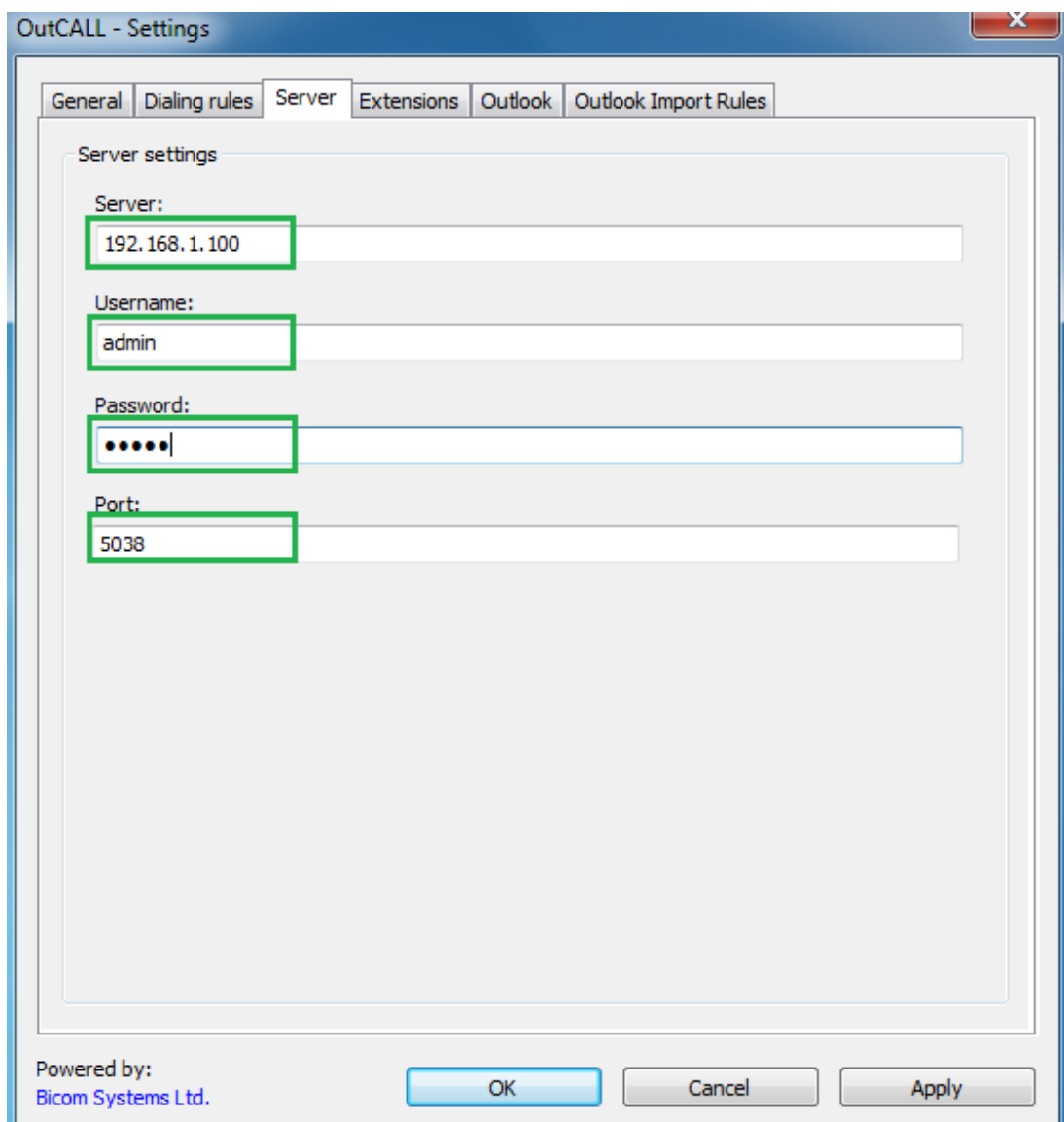
<http://code.google.com/p/outcall/downloads/list>

OutCALL is totally free, just simply click next to install it then you can use it to integrate

Outlook and Zycoo IP PBX.

2. Configure OutCALL TAPI to integrate outlook and Zycoo IP PBX

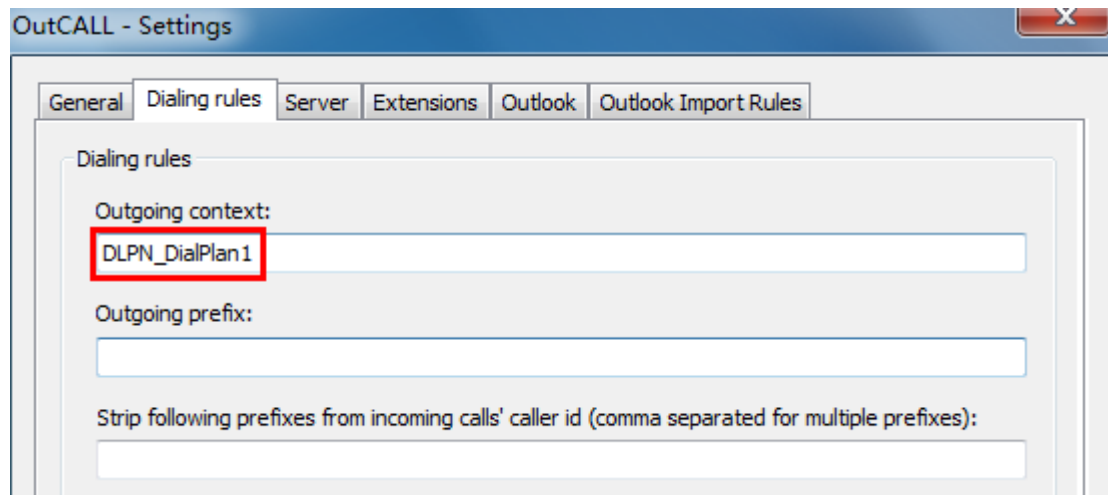
2.1 Server Settings



The screenshot shows the 'OutCALL - Settings' dialog box with the 'Server' tab selected. The 'Server settings' section contains four input fields, each highlighted with a green box: 'Server' with the value '192.168.1.100', 'Username' with the value 'admin', 'Password' with masked characters '•••••', and 'Port' with the value '5038'. The dialog box has a title bar with a close button (X) and a tabbed interface with tabs for 'General', 'Dialing rules', 'Server', 'Extensions', 'Outlook', and 'Outlook Import Rules'. At the bottom, it says 'Powered by: Bicom Systems Ltd.' and has 'OK', 'Cancel', and 'Apply' buttons.

It's the same as you connect xtelsio to Zycoo IP PBX via AMI.

2.2 Dialing Rules' configurations

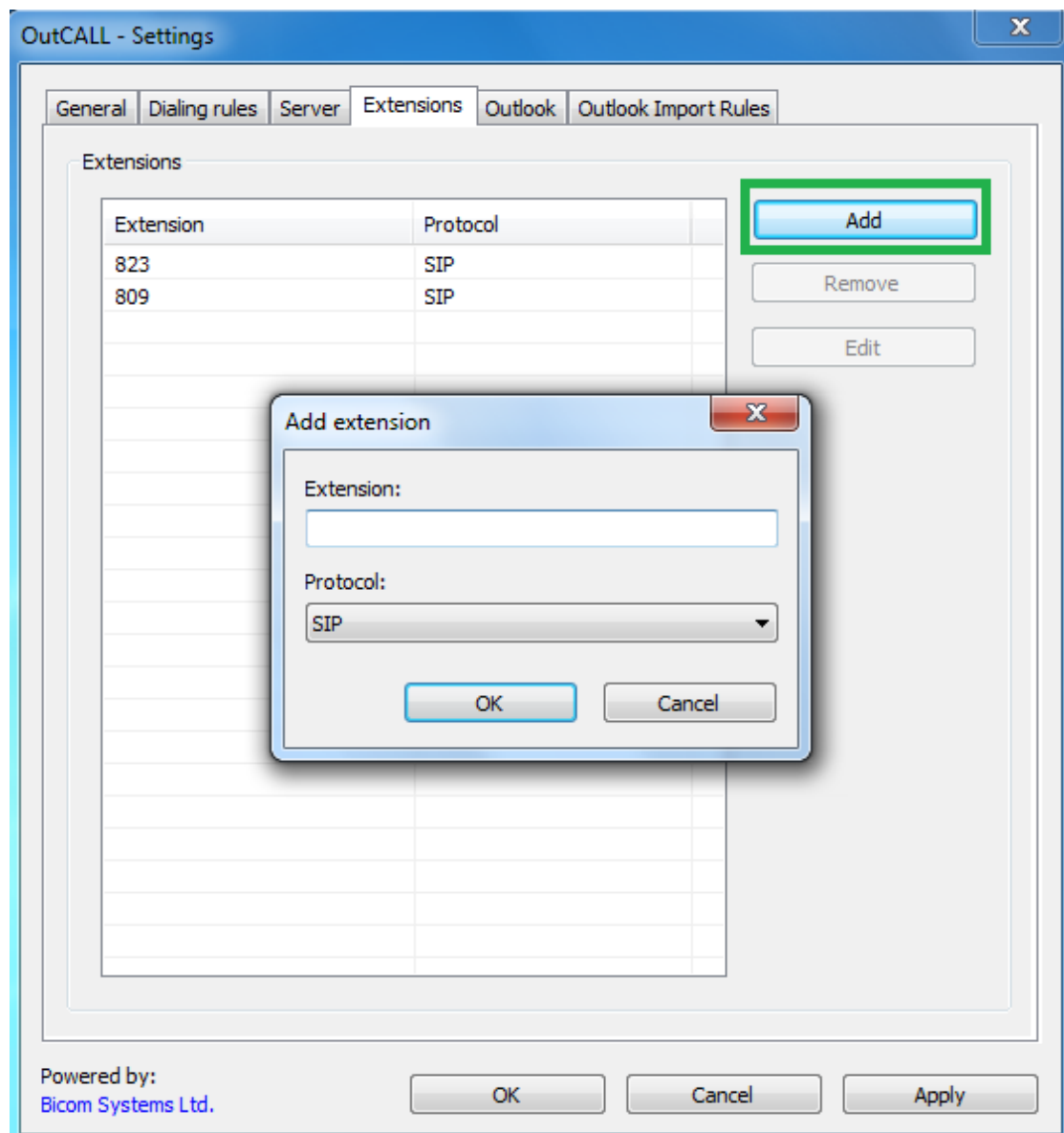


Click on Dialing rules tap to configure the dial rules.

- Outgoing context: this option depends on the dial plan you are using for making the outgoing calls to contacts listed in Outlook contacts' list. If it's dial plan1, then you need to fill in DLPN_DialPlan1, if it's dial plan2 then you need to fill in DLPN_DialPlan2, and so on.
- Outgoing prefix: this depends on what prefix you defined for the dial plan, when you dial the numbers in Outlook contact list OutCALL will add the prefix to that number, then you can dial out. If no prefix then please leave the text box blank.

2.3 Users' configurations

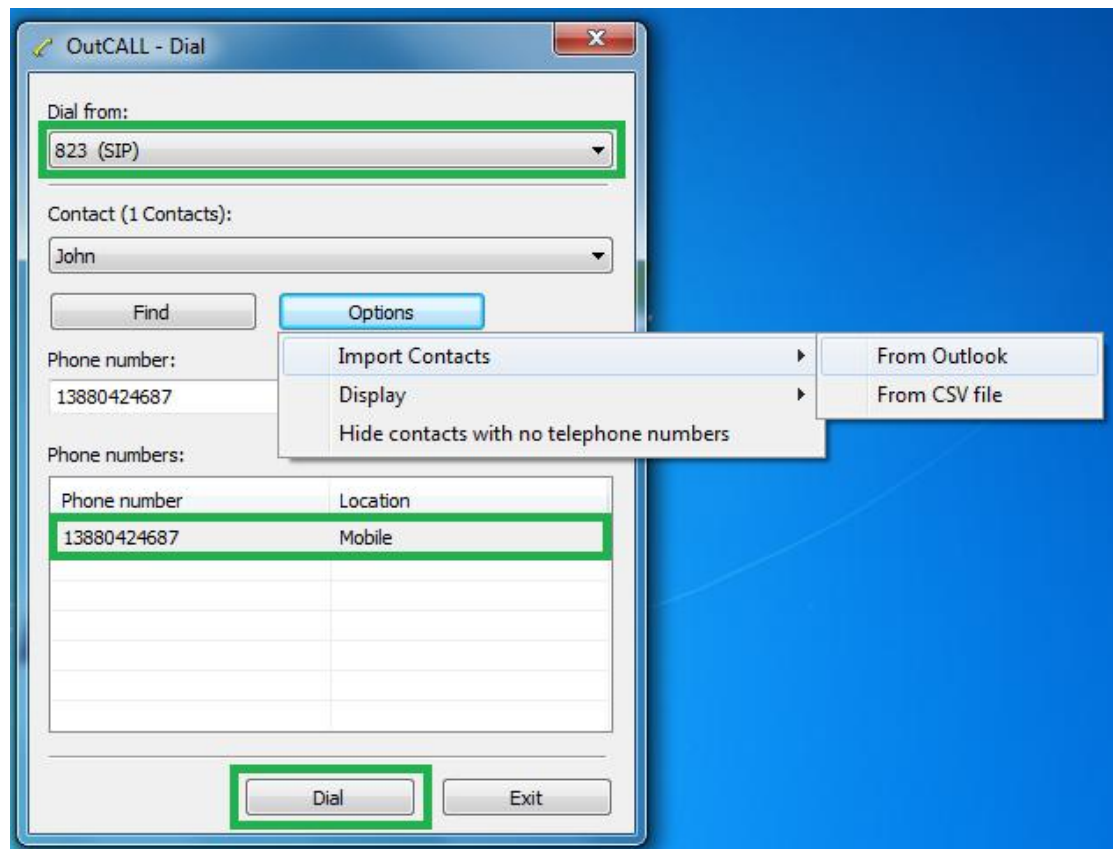
Click on Extensions tap to configure users, you can press Add button to add more users.



3. Click to call

You can import contacts from Outlook or from CSV files.

So it means you can call the contacts even without opening Outlook.



After importing, you can select an extension from the Dial from drop-down list, and a contact in the Phone number list and press Dial button to start the call from extension 823 to John's Mobile number.