



Parallel I/O PCI Add-On Card

(DS-33010 / DS-33011)

CE FC

◆ 1.0 Introduction

Thank you for purchasing our **PCI Parallel Card**. This unique PCI I/O card allows you to attach your computer to support DB-25 F Parallel port, and get faster devices results.

The PCI I/O Card function of PCI Bus is for Plug and Play. Users do not need a jumper to set I/O address and IRQ location, and the system will search the device automatically. There is no conflict with other interface card or devices.

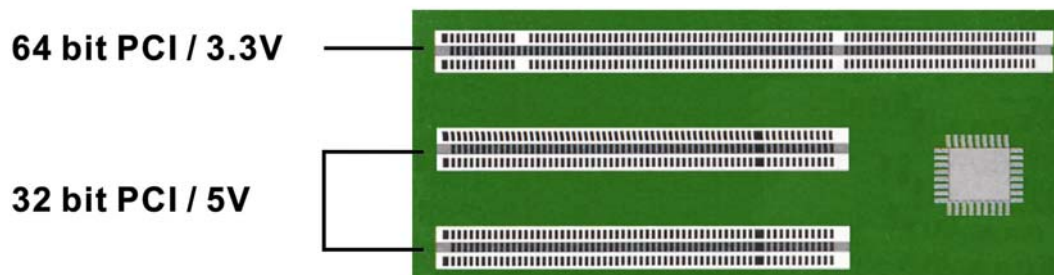
◆ 2.0 Specification

2.1 Features:

1. Improves I/O access speed up to 8 times faster than existing ISA-bus serial ports.
Reduces CPU load and improves system performance dramatically.
2. IRQ sharing feature eliminates IRQ conflicts
3. One or two high-speed parallel ports support all types of parallel port devices including a removable cartridge drives, CD-R/ RW, printers, scanners, tape drives and other parallel port devices.
4. Works with various type of parallel devices

2.2 Universal Parallel PCI Card:

1. Bus type: Supports both 64-bit & 32-bit PCI Bus
3.3V & 5V connector keys



2. Chip: SUN1888
3. Interface: Support ECP(Enhance Capacity Port) / EPP(Enhance Parallerl Port)

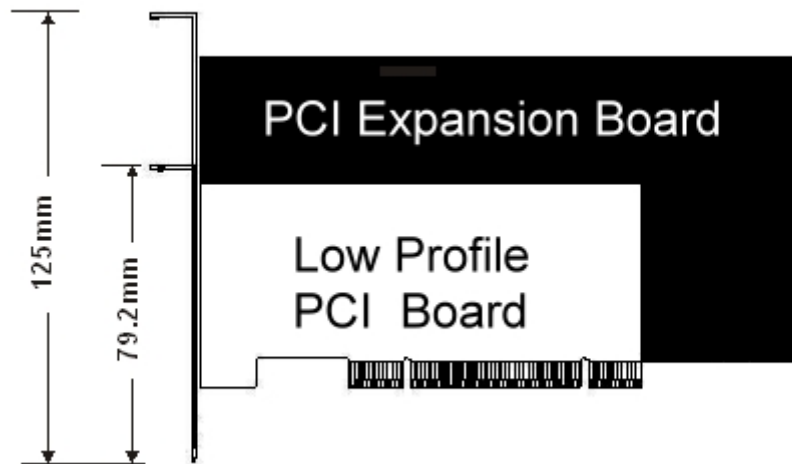
SPP(Stander Parallerl Port) / BPP(Bi-direction Parallerl Port)

Conforms to IEEE 1284-1994 parallel port standard

4. Speed: Up to 770 KB/Sec SPP/BPP
Up to 21.4 MB/Sec ECP/EPP/SPP/BPP (PS- II)
Full support for DOS and Windows based software
5. Port type: One or Two DB25F parallel ports.
6. FIFO Length: Built-in high-speed with 32-byte transmit/receive hardware FIFO buffers.
7. I/O Address: Plug and Play or RE-Map to ISA address 278, 378.
8. IRQ sharing feature eliminates IRQ conflicts.

2.3 Low Profile:

Low Profile PCI cards are so small that they easily fit into almost any system.



2.4 System Requirements

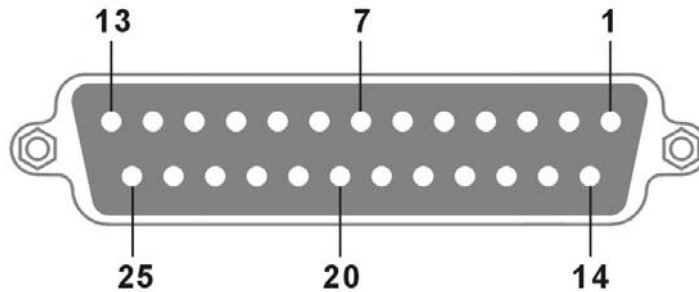
1. Pentium or equivalent computer with an available PCI slot.
2. CD-ROM / DVD-ROM required for software installation.
3. Windows 3.1x/ 95/98SE/ME/NT4.0/2000/XP/7, DOS, Linux.

2.5 Package list :

1. Hardware:
 - PCI Parallel IO Card × 1
 - Print Cable 25PIN Female cable (only for 2 ports card)
 - 44Pin -(25Pin female) cable × 1 (only for Low Profile card)
2. CD Driver
3. User's Manual

2.6 Pin Assignments :

DB25 Female



PIN	Signal	PIN	Signal
1	STROBE	14	AUTO FEED
2	DATA0	15	ERROR
3	DATA1	16	INIT
4	DATA2	17	SELECT INPUT
5	DATA3	18	GROUND
6	DATA4	19	GROUND
7	DATA5	20	GROUND
8	DATA6	21	GROUND
9	DATA7	22	GROUND
10	ACKNOWLEDGE	23	GROUND
11	BUSY	24	GROUND
12	PAPER EMPTY	25	GROUND
13	SELECT		

◆ 3.0 Operation Environment

1. Operation temperature: 0°C ~ 57°C
2. Operation humidity: 5 to 95% RH
3. Storage temperature: -20°C ~ 85°C

◆ **4.0 Driver Installation**

4.1 Windows 95 / 98SE / ME:

On booting up, Windows 95 / 98SE / ME will detect present of the PCI Parallel card and will prompt for driver installation. Insert the driver CD in your CD/DVD ROM drive and point directory: **\IO\PCI IO\win9x**

4.2 Windows 2000 / XP / 2003:

On booting up, Windows 2000 / xp / 2003 will detect present of the PCI Parallel card and will prompt for driver installation. Insert the driver CD in your CD/DVD ROM drive and point directory: **\IO\PCI IO\win2k and xp**

4.3 Windows NT4.0:

On booting up, Windows NT4.0 will detect present of the PCI Parallel card and will prompt for driver installation. Insert the driver CD in your CD/DVD ROM drive and point directory: **\IO\PCI IO\winNT**

4.4 Linux:

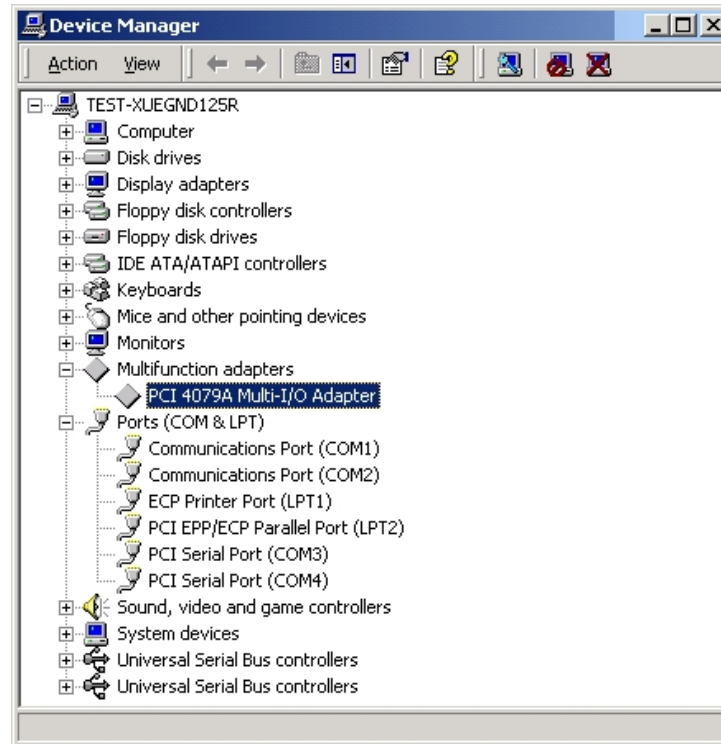
Please read the detail files about the Linux OS system installation step from CD ROM: **\ IO\ PCI IO\Linux\Red Hat V8.0.pdf**
CD ROM: **\ IO\ PCI IO\Linux\Red Hat V6.0.pdf**

4.5 Dos:

Please install the driver from CD ROM: **\ IO\ PCI IO\DOS\install.exe**,
and follow the installation step from CD ROM: **\ IO\ PCI IO\parallel.pdf**

4.6 Verifying Parallel PCI card:

When Windows finished installing the driver. You have to check the Control Panel-System-Hardware-Device Manager-Ports[COM&LPT] will show the additional ports.



Note:

If you install PCI Parallel ports to your system, you will be requested to restart your computer when you finish setting up each parallel port. Click “Yes” if all parallel ports have been installed, others click “No”.

◆ 5.0 Configure LPT port

5.1 How to connect your peripheral LPT device

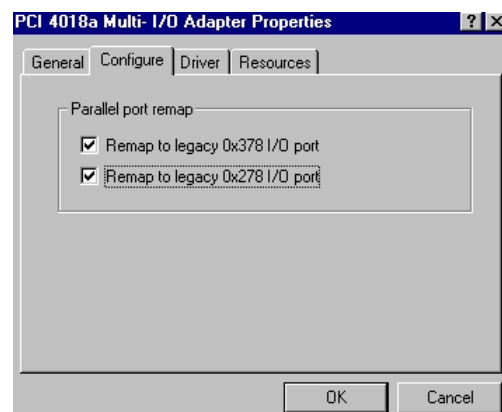
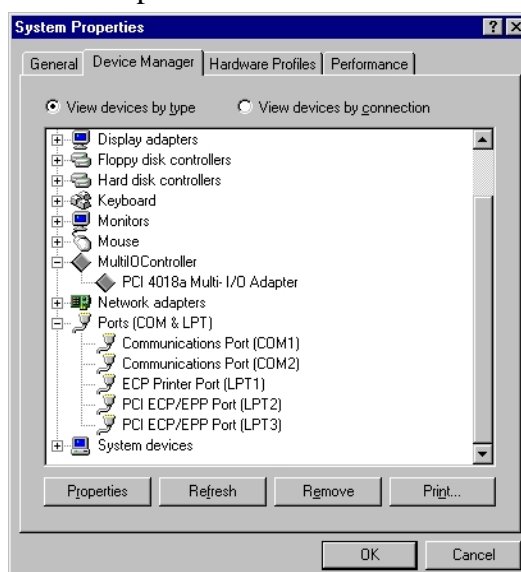
1. Be sure your printer or other parallel peripheral had connected to PCI Parallel card.
2. Please check Control panel – Printers – Add Printer.
The “Add Printer Wizard” will show up.
3. Please install your printer driver. If you want to connect the printer to your PCI Parallel Card, select PCI ECP/EPP Port to your device. Please click “**Next**”, and finish the add new printer step.



Note: If you want to connect the scanner or the zip disk to your Card, you need to remap the Parallel Port I/O address to 0x378 or 0x278 under Windows 95 / 98SE / ME .

5.2 Remap the Parallel Port I/O address

1. Double click “**Multi IO Controller**” in Device Manager of System Properties. Select **PCI Multi-I/O Adapter**, and right click the mouse choose “**Properties**”.
2. Please choose the “**Configure**” page. If you want to remap I/O address, select Remap to legacy 0x378 and/or 0x278 I/O ports. Click “**OK**”, then it will be set after reboot computer



3. After reboot computer, you can check Parallel Port I/O address from System Properties.