



WIRELESS 150N USB 2.0 ADAPTER



Quick Installation Guide

Content

Package Contents	Page 2
Network Card Installation	Page 3
Connect to Wireless Access Point.....	Page 7

Package Contents

Before you starting to use this wireless network card, please check if there's anything missing in the package, and contact your dealer of purchase to claim for missing items:

- 1) USB Wireless Network Card (1 pcs)
- 2) Driver/Utility/Quick Guide/User Manual CD-ROM (1 pcs)

2



1

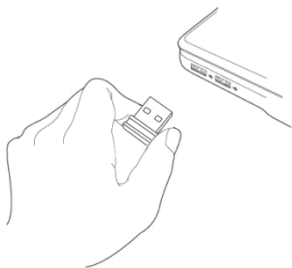


Network Card Installation

Please follow the following instructions to install your new USB wireless network card.

1. Insert the USB wireless network card into an empty USB 2.0 port of your computer when computer is switched on.

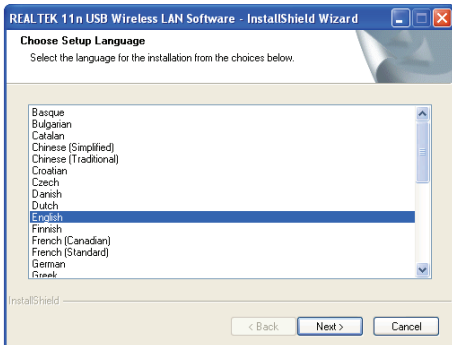
Never use force to insert the card, if you feel it's stuck, flip the card over and try again.



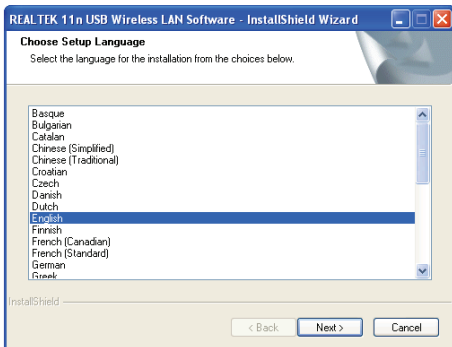
2. The following message will appear on your computer, click 'Cancel'.



3. Insert device driver CDROM into the CD/DVD ROM drive of your computer. Select “Driver/Utility Installation” to install the software program.



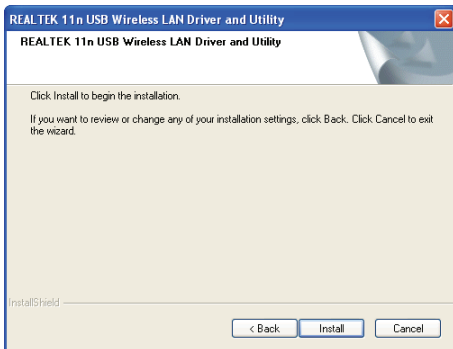
4. Please select the language you wish to use, then click 'Next'.



5. Click 'Next' to continue.



6. Click 'Install' to start installation. Installation procedure needs few minutes to complete, please be patient.



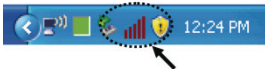
7. Click 'Finish' to reboot your computer to complete installation procedure. If you don't want to reboot computer now, select 'No, I'll restart my computer later' option and click 'Finish'. Please note you have to reboot your computer before you can use your new USB wireless network card.



Connect to Wireless Access Point

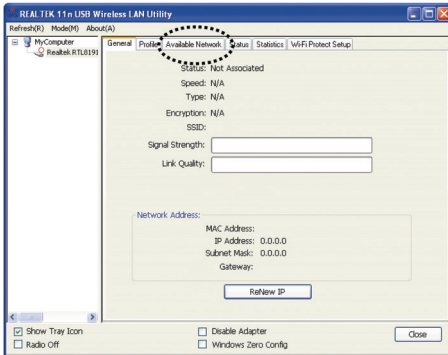
Using Configuration Utility to Connect to Wireless Access Point:

1. After installation is complete, wireless configuration utility will be shown in the desktop of your computer automatically. You will also see an icon at the lower-right corner of your windows system. You can click the icon by right mouse key, and select the configuration utility you want to use.



HERE!

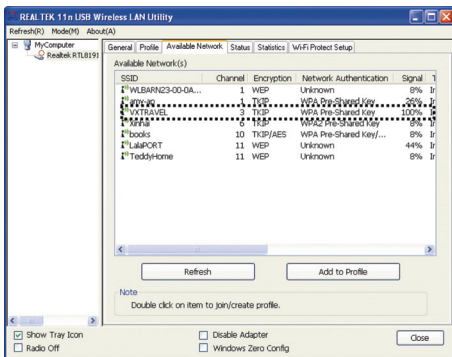
2. Wireless utility will appear. Click 'Available Network' tab to search for wireless access points nearby.



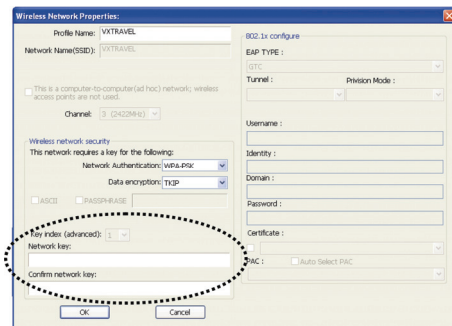
3. Please wait for a while, and all wireless access points which can be reached by this wireless network card will be displayed here.

Please select the access point you want to connect, and then double click on it or click 'Add to Profile'.

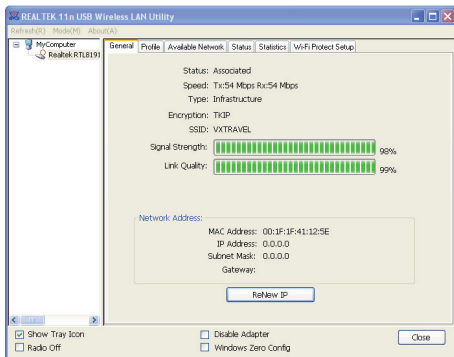
If the wireless access point you want to connect does not show here, please click 'Rescan'.



4. If a password (a.k.a. 'Network Key') is required to access the wireless access point, please input it in 'Network key' (and input it again in 'Confirm network key' for confirmation). Click 'OK' when password is properly inputted.



5. The network card will attempt to connect to access point now, this may require few seconds to minutes, please be patient. When the 'Status' become 'Associated' in 'General' tab, your computer is connected to access point you selected. Click 'Close' to close configuration menu.



For advanced settings and other features of this USB wireless network card, please refer to user manual enclosed in supplied CD-ROM.

