



2-PORT NAS
SATA HDD ENCLOSURE



Quick Installation Guide

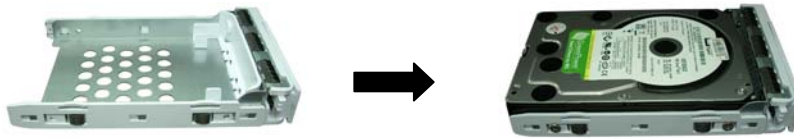
Getting started

This is a step-by-step instruction on how to start using the storage server.

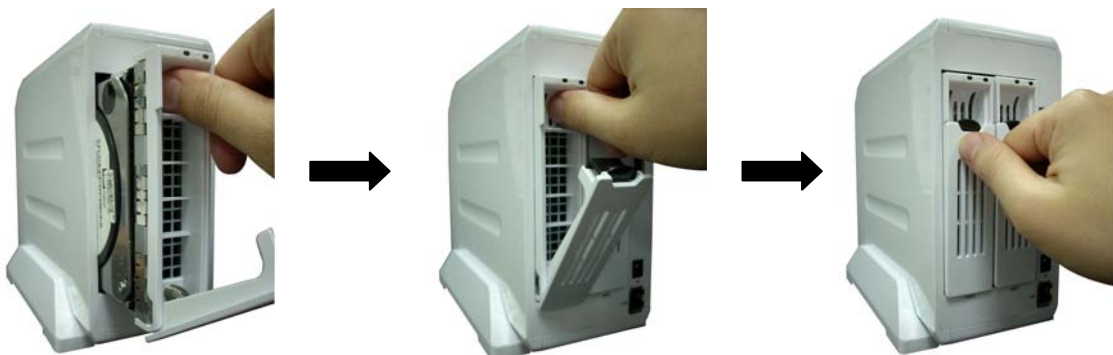
- 1) Pull out the disk drawer from the case of storage server as shown in the setup diagram below.



- 2) Fix your SATA hard disk driver in the drawer by screws as shown in the setup diagram below.

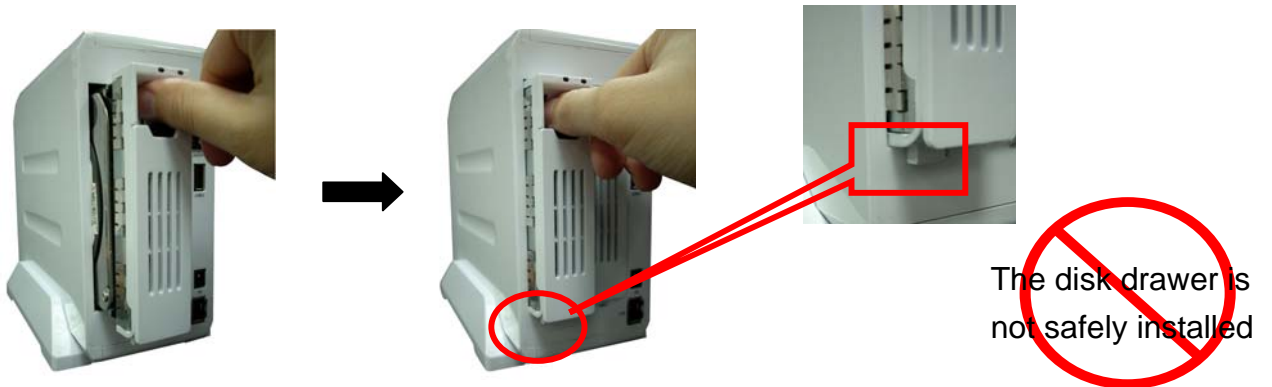


- 3) Push the disk drawer with hard disk driver installed back into the case of storage server as shown in the setup diagram below.



Note: Please make sure the disk drawer is safely installed.

For example, please DO NOT install hard disk by the way showed in the following pictures.



- 4) Plug the power adaptor to the storage server and connect the storage server to your network as shown in the setup diagram below.



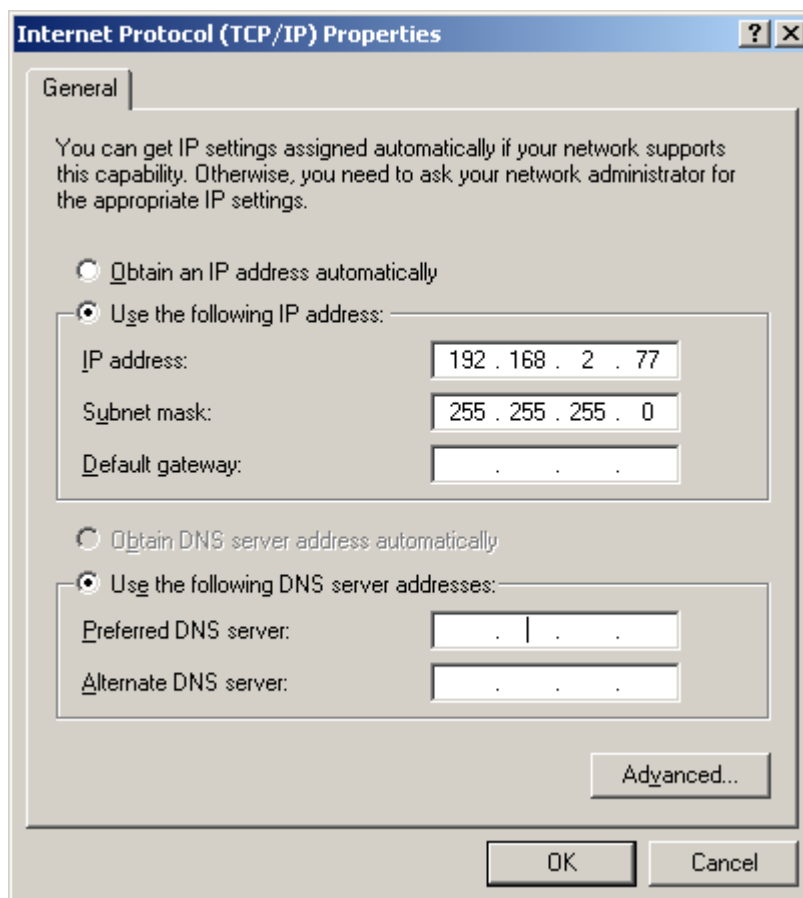
- 5) Power on the storage server by pressing the power switch of the storage server on as shown in the setup diagram below.



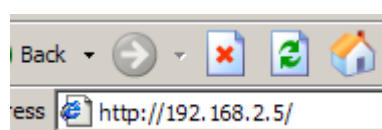
- 6) When the HDD LED of SATA is lighted, the storage server is ready.

- 7) The default IP address of storage server is 192.168.2.5. The PC to setup the storage server should be in the same subnet as the storage server. If the IP address of your PC is not in the range of 192.168.2.1~254, please modify the Windows IP address of your PC as following diagram.

Note: If you have to modify the Windows IP address of your PC, please remember the original Windows IP address settings of your PC. After you finished the whole quick setup procedure, you have to modify the Windows IP address settings of your PC back to the original values to make your PC work well.

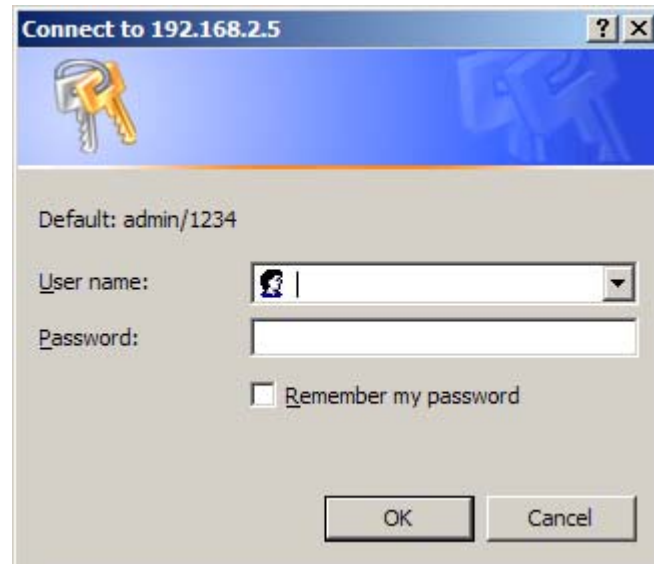


- 8) Once the IP address of your PC is in the same subnet of the storage server, enter the URL of default IP address **http://192.168.2.5** (default IP address of this storage server) into your PC's web browser and press <enter>



9) The login screen below will appear. Enter the “User Name” and “Password” and then click <OK> to login.

Note: By default the user name is “admin” and the password is “1234”.



Quick Setup

The Quick Setup section is designed to get you using the storage server as quickly as possible. In the Quick Setup you are required to fill in only the information necessary to simply share the storage in your network. Once you click on the **Basic** in the HOME page, you should see the screen below.

Step 1) Setup Time Zone

The Time Zone allows your storage server to base its time on the settings configured here. It is important to keep track of correct update time of all files stored in this storage server. You can setup the storage server to automatically get correct time from the Internet every time when it startup. Or you can also enter current time manually, and the storage server will count the time by itself (There is a battery inside the storage server to make it keep counting correct time when the storage server is powered off).

Storage Server
Language Set ▼

- Status
- ✓ Basic
- Network
- File/FTP Server
- BT Download
- Web/FTP Download
- iTunes Server
- Media Server
- Tools

Time Zone
Password

Time Zone

Set the time zone of the system, this information is used for recording files created and modified date in the FTP/File Server.

Set Time Zone :	(GMT)Greenwich Mean Time: Dublin, Edinburgh, Lisbon, London ▼
Time Server Address :	192.43.244.18
Daylight Savings :	<input type="checkbox"/> Enable Function Times From January 1 To January 1
Set system date and time:	Year: 2007 Month: 1 Day: 14 Hour: 03 Minute: 40 Second: 56

Apply
Cancel

Parameter	Description
Set Time Zone	Select the time zone of the country you are currently in. The router will set its time based on your selection.
Time Server Address	You can manually assign time server address if the default time server does not work.
Enable Daylight Savings	The router can also take Daylight savings into account. If you wish to use this function, you must check/tick the enable box to enable your daylight saving configuration (below).
Start Daylight Savings Time	Select the period in which you wish to start daylight Savings Time
End Daylight Savings Time	Select the period in which you wish to end daylight
Set System Date and Time	If your network is not connected to the Internet, the storage server will have no chance to get correct time from the time server. In this case, you can manually assign current time here.

Click on **Apply** to save settings and then in the next page, click **Continue** to continue setting.

Step 2) Setup Network

A suitable IP address is required to make the storage server work well in your network. The IP address used by the storage server should be of the same subnet as your network. If there is an active DHCP server in your network and you do not need the FTP server function, you can set the storage server to obtain an IP address automatically. Otherwise, it is suggested assigning a static IP to the storage server.

The screenshot shows the 'Storage Server' web interface. On the left is a navigation menu with options: Status, Basic, Network (selected), File/FTP Server, BT Download, Web/FTP Download, iTunes Server, Media Server, and Tools. The main content area is titled 'Network Settings' and includes a 'Language Set' dropdown in the top right. Below the title, it says 'Set the IP Address and DNS Address of the system manually.' There are two main sections: 'IP Address Settings' and 'DNS Address Settings'. In 'IP Address Settings', the radio button for 'Use the following IP address' is selected. Below this are three input fields: 'IP address' (192.168.2.5), 'Subnet Mask' (255.255.255.0), and 'Gateway Address' (0.0.0.0). The 'DNS Address Settings' section has three empty input fields for 'First DNS Address', 'Second DNS Address', and 'Third DNS Address'. At the bottom right are 'Apply' and 'Cancel' buttons.

Parameter	Description
Obtain an IP address automatically	Select Obtain an IP address automatically if you want this storage server get an IP from an active DHCP server in your network.
Use the following IP address	Select Use the following IP address if you want to assign a static IP address to the storage server.
IP address	The IP address used by the storage server in your network. Please make sure that this IP address is not used by any other PC and network device in your network.
Subnet Mask	Please enter the subnet mask of your network.

Gateway Address

Please enter the default gateway IP address of this storage server. Usually, it is the LAN IP address of the router that you are using to access the Internet.

DNS Address

Please enter at least one DNS address. DNS address is the IP address of DNS server which provides domain name service to you.

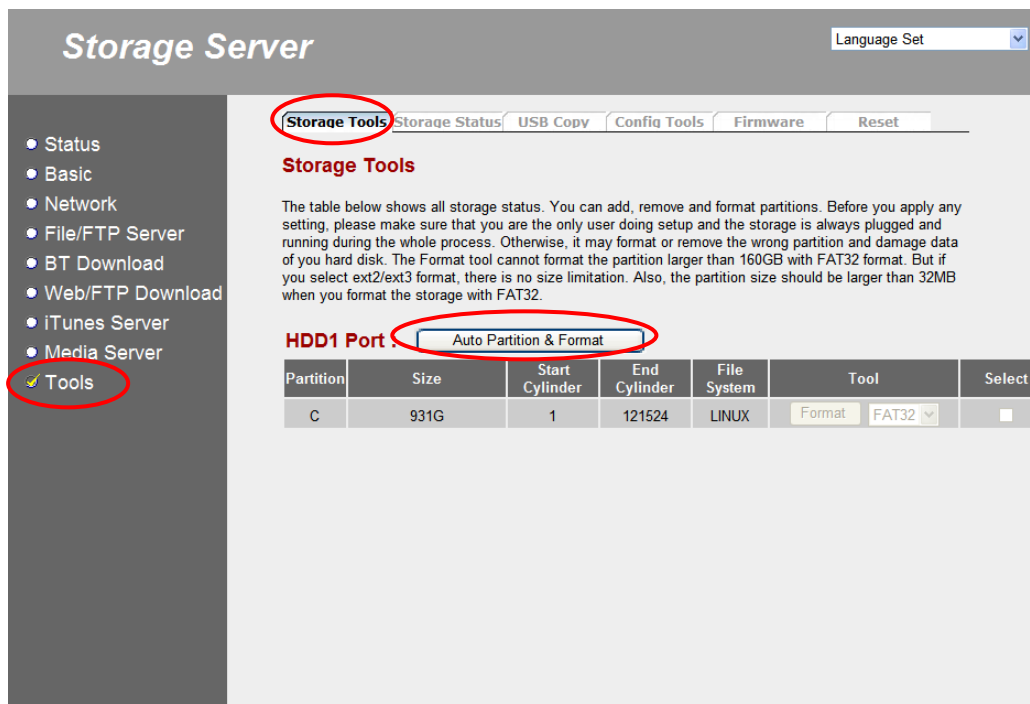
Click on **Apply** to save settings and then in the next page, click **Continue** to continue setting.

Step 3) Partition and format internal hard disk drive

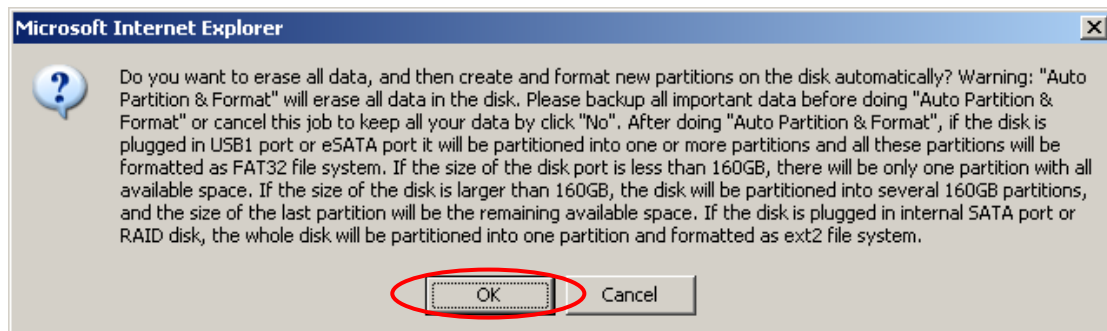
Click **Tools**, and in the first page **Storage Tools** click **Auto Partition & Format** button of **HDD 1 Port**.

This function will automatically clear your hard disk drive (remove all old partitions in your hard disk drive), create one partition and format the newly created partition with ext2 format which provides the best performance.

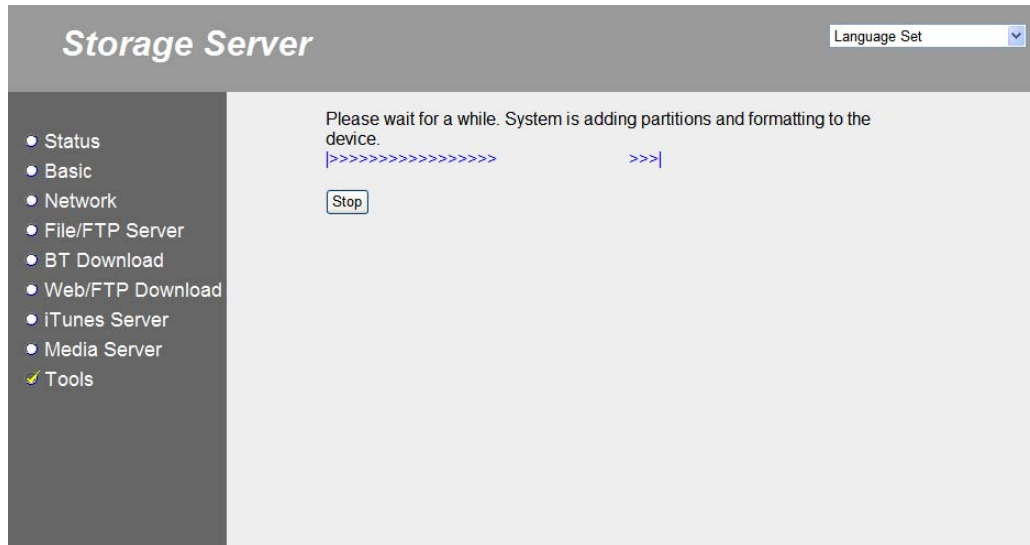
Note: All data originally stored in the internal hard disk drive will be removed. Please backup the old data in the hard disk drive before using it. If this is not what you want, please stop the quick setup procedure and refer to the User's Manual for advanced setup.



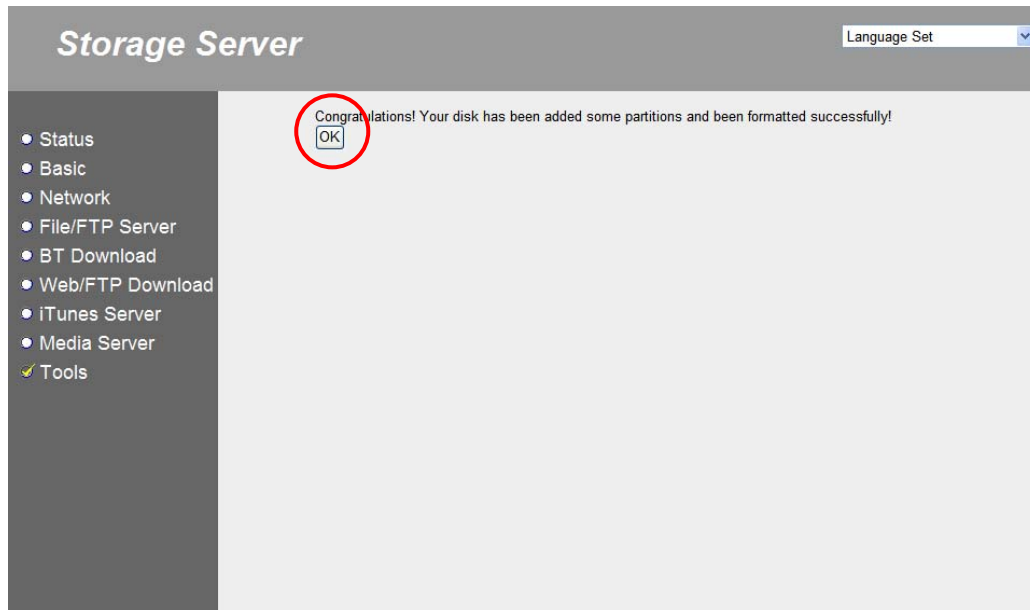
If you make sure that you want this tool to clear the content of the internal hard disk drive and make new partition and format for you, please click **OK** to continue.



During the process of partition and format, the following screen will display. It will take several minutes. The time required depends on the size of the hard disk drive.



When the process of partition and format is finished, the following screen will display. Click **OK** to continue setup.



Step 4) Setup File Server

Click **File/FTP Server**, and go to the second page **File Server**.

The default storage name is "Storage" which will be displayed in the "My network places" list. Please make sure that the name does not conflict with other PC or devices in your network. You also can assign another name and then click **Save** to save the new name.

After setting the storage name, you have to add a folder and share it. The following procedure is step-by-step instructions to help you creating a new folder named "public" and share it to all users anonymously in your network (It means all users in your network can access the new created folder "public" without password). If this is not what you want, please stop the quick setup procedure and refer to the User's Manual for advanced setup.

Click **Add** in the **Shared Folders** section in the same page. Then an **Add/Edit Shared Folder** page shows.

Storage Server Language Set

Users Groups **File Server** FTP Server

File Server

Storage name in the "My network places" :

Name :	<input type="text" value="Storage"/>	(alphanumeric and underline)
Workgroup :	<input type="text" value="WORKGROUP"/>	(alphanumeric, space and underline)
Description :	<input type="text" value="NAS SYSTEM"/>	

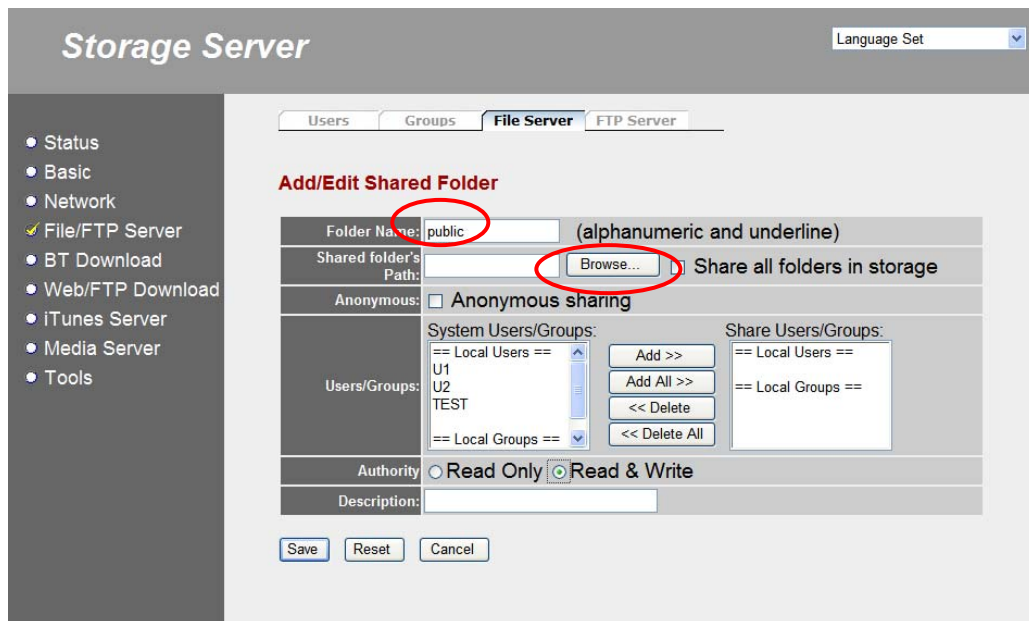
You can add/edit shared folders below. All shared folders can be accessed from "My Network Places". Please assign the users' read/write authority for each shared folder.

Shared Folders:

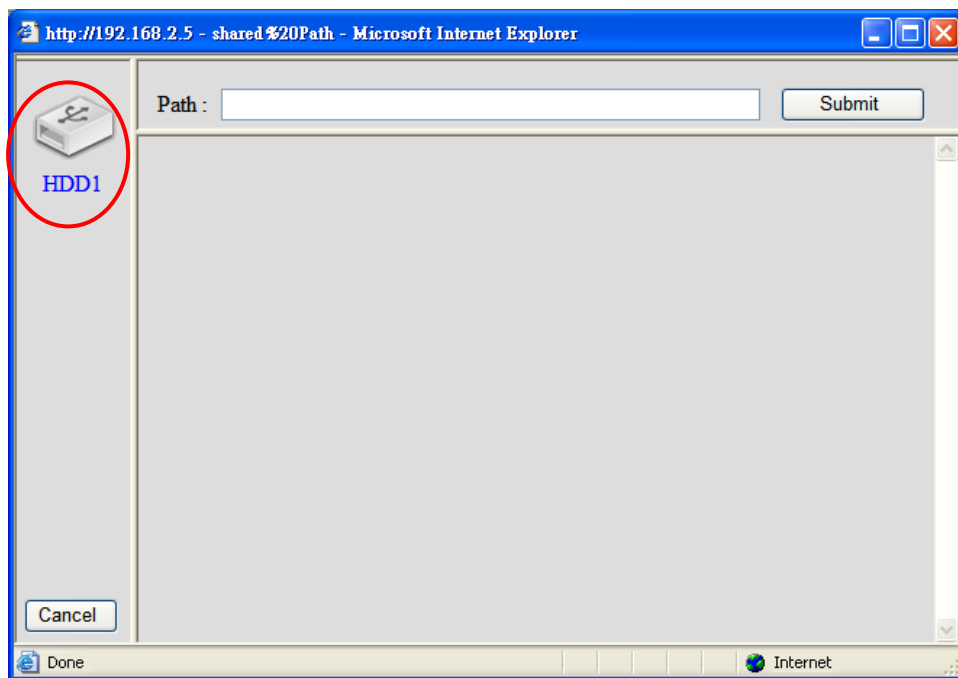
Folder Name	Path	Description	Read	Write	Select
<input type="button" value="Add"/>	<input type="button" value="Edit"/>	<input type="button" value="Delete Selected"/>	<input type="button" value="Delete All"/>	<input type="button" value="Reset"/>	

The setting below will apply to any storage which you don't set any shared folder above. In this way, all users have the same authority ("Read & Write", "Read Only" or "Not to Share") to access folders in the storage.

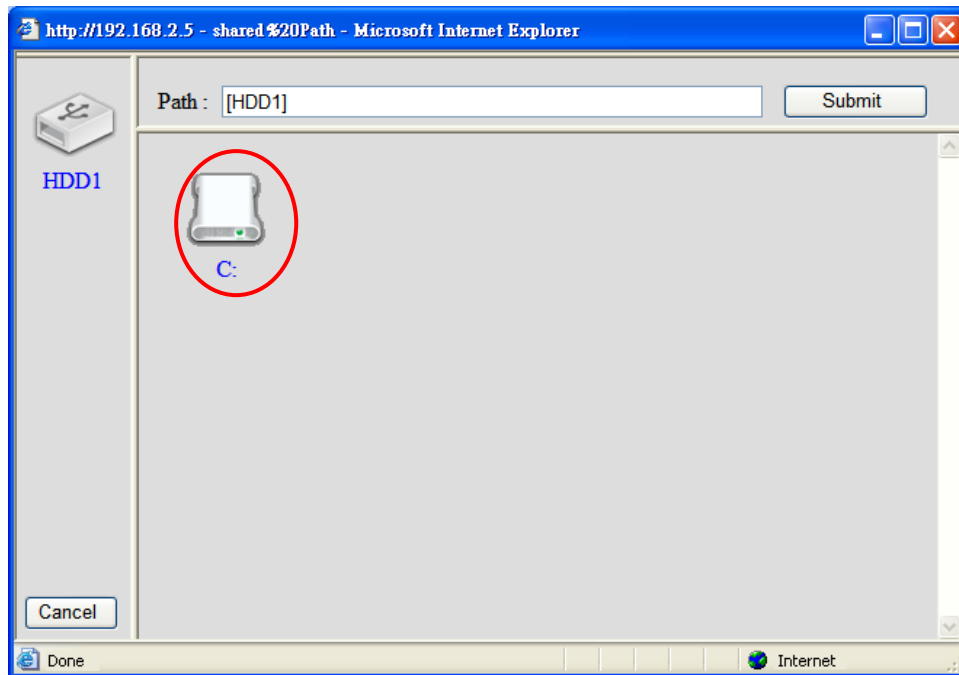
In the **Add/Edit Shared Folder** page, enter the folder name "public". Click **Browse** to assign a path for the folder, then the assign folder path window pops up.



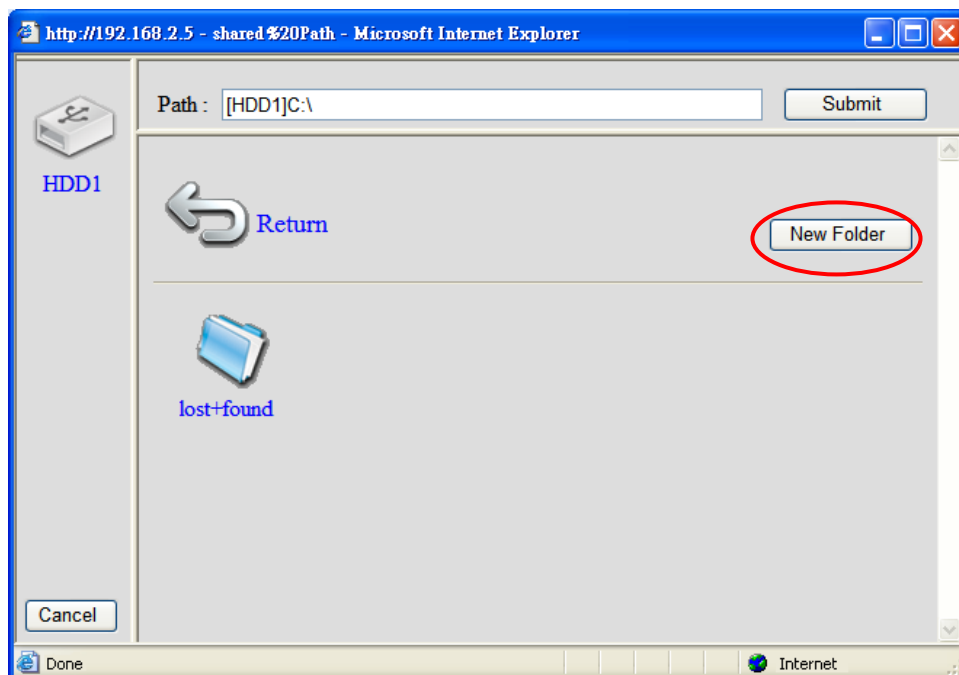
In the assign folder path window, click **HDD1** icon (HDD1 represent the internal SATA hard disk drive). Then the partitions of HDD1 will display in the bottom right list.



Click partition **C:** icon. Then the list of folders in partition C: will be displayed.



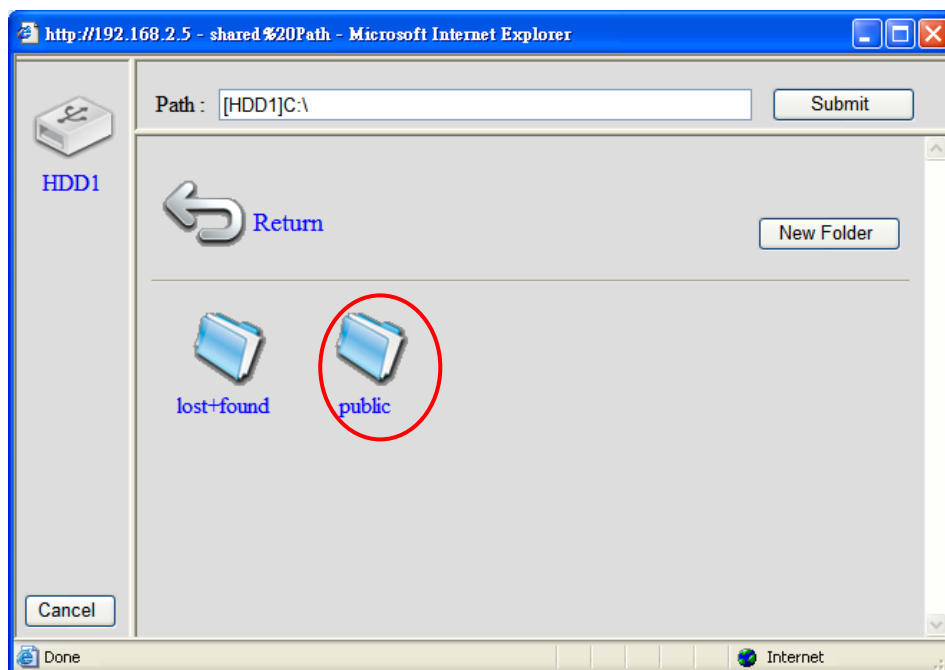
Because partition C: of HDD1 is newly created by **Auto Partition & Format** function, there is no folders in partition C: now. So the list is empty. We have to create a new folder named "public" in partition C: Click **New Folder**, and then an **Add New Folder** window pops up.



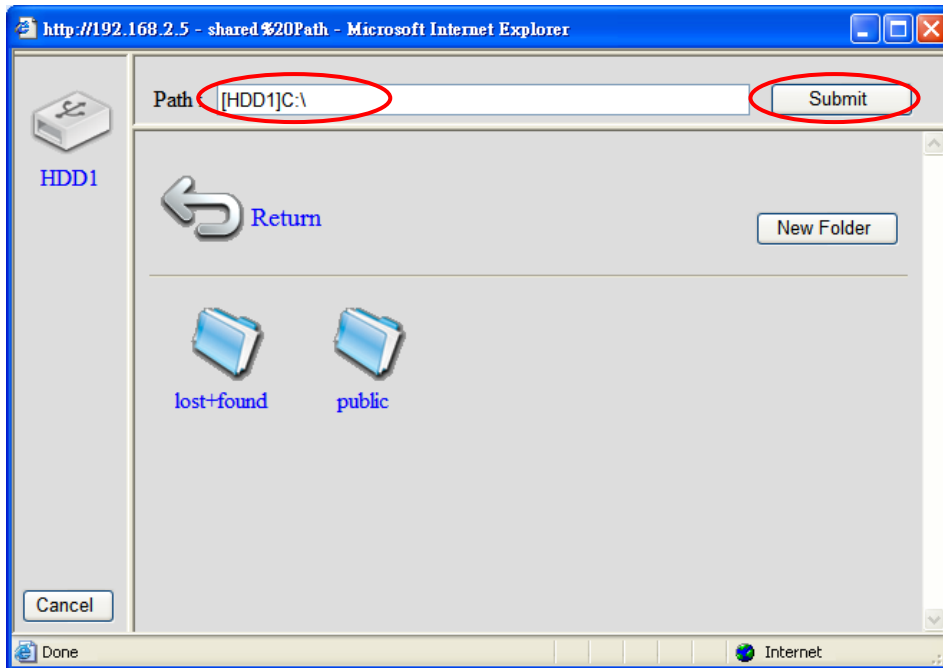
Enter the name of the new folder "public", and then click **New**.



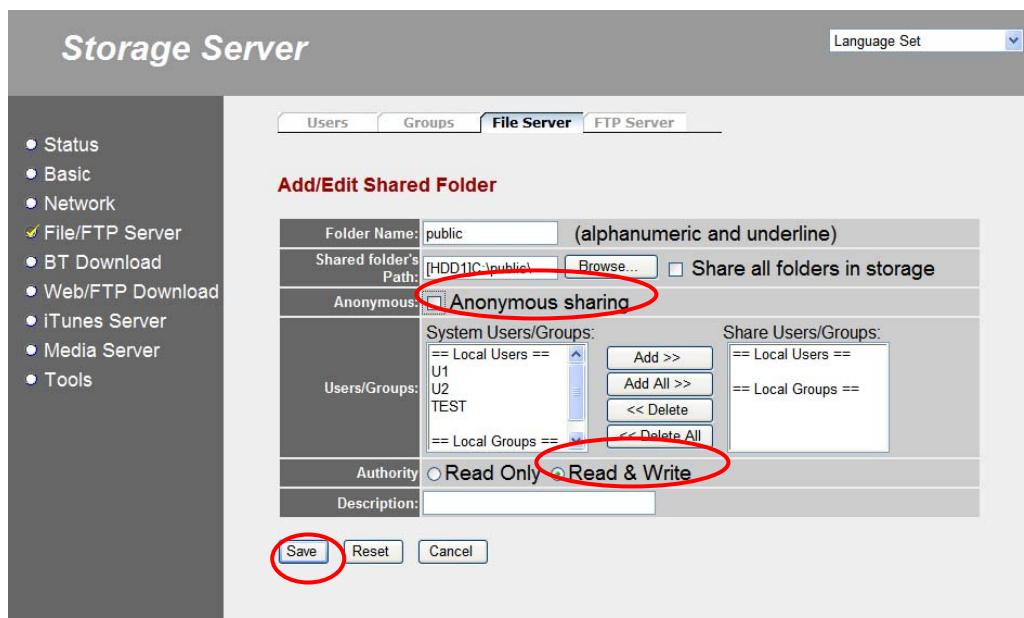
Now you can see the newly created folder "public" displayed in the folder list of partition C:. Select folder "public" by click its icon. Then the content list of folder "public" will be displayed.



Because the folder "public" is newly created and there is no file or folder in it, so the list is empty. Now the **Path** displays the complete path of the folder "public". Click **Submit** to confirm and return to the **Add/Edit Shared Folder** page.



Now you can see the path of newly created folder “public” is assigned as the path of the shared folder. Select **Anonymous Sharing** to allow users access the folder without authentication by password. Click **Read & Write** to allow users have the right the read and write files in the folder “public”. You also can enter a description of this folder. After you have confirmed every thing, click **Save** to save the settings.

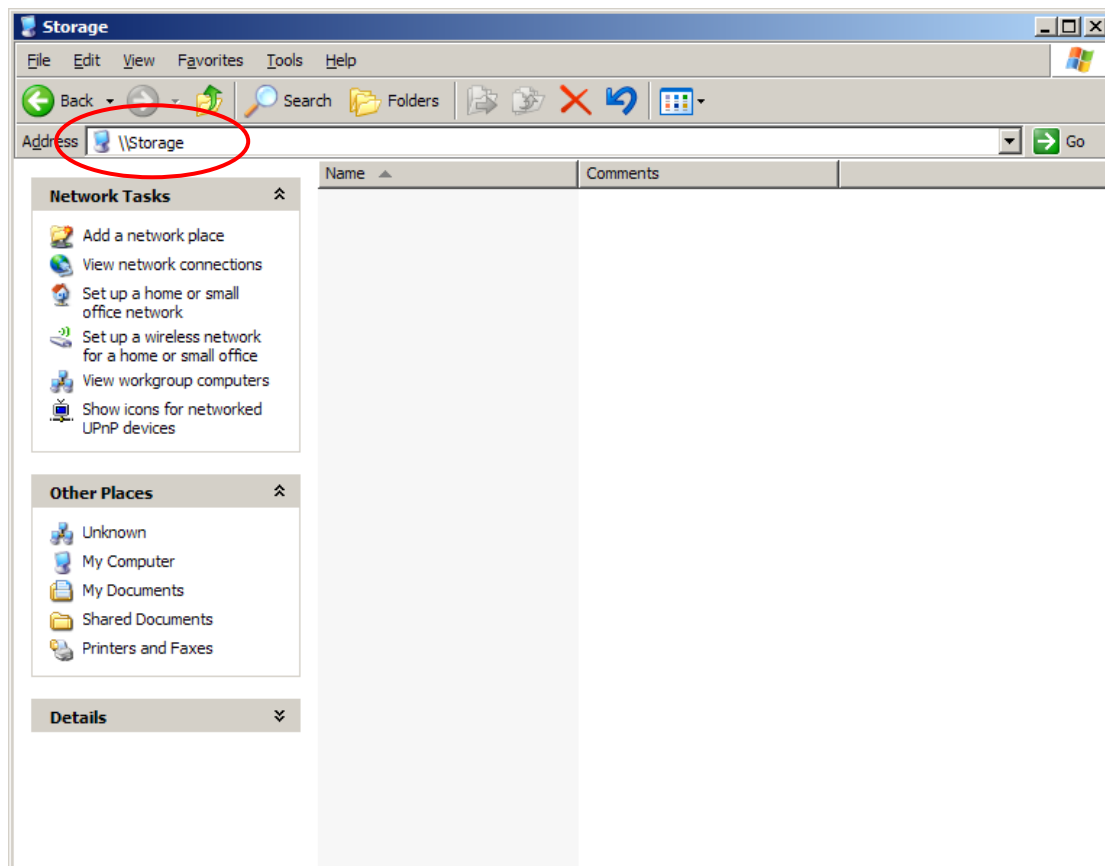


Step 5) Restart the storage server

Shut down the storage server by pressing the power button and wait until the LEDs are all turned off. And then start the storage server by pressing the power button and wait until the SATA LED is lighted.

Step 6) Start to use the File Server

In a Windows PC, open the Windows Explorer. Enter the address "[\\Storage](#)" and press <enter>.



Then the icon of the shared folder “public” will be displayed. You can double click the icon of the shared folder “public” to enter the folder and start to use it.

