



**WIRELESS LAN
USB 2.0 ADAPTER**

QUICK START GUIDE

(DN-70031)

BOX CONTENTS

- Wireless LAN Adapter
- Quick Start Guide
- Driver CD



Wireless LAN Adapter



Quick Start Guide



Driver CD

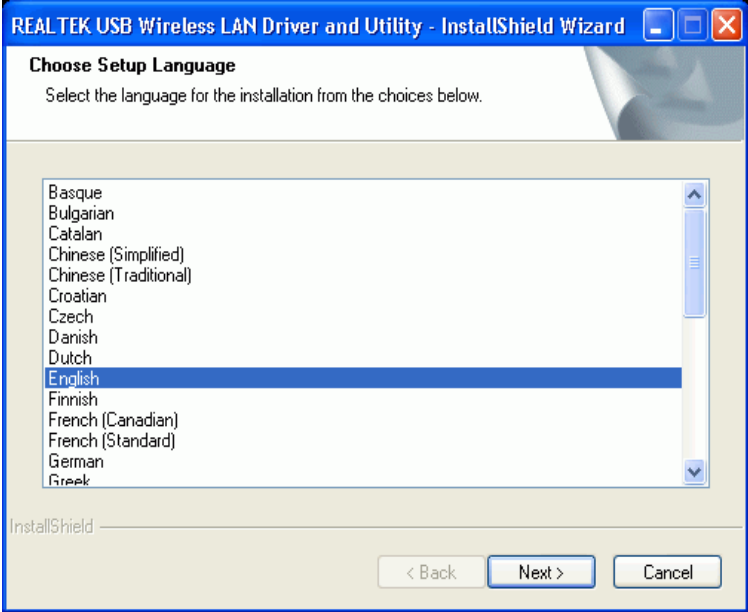
System Requirement

Windows platform: Windows 2K, XP and Vista

INSTALL DRIVER/UTILITY

Step1: Choose Setup Language

Insert installation CD into CD ROM. Wizard program prompts “Choose Setup Language” window automatically. Click Next button to proceed.



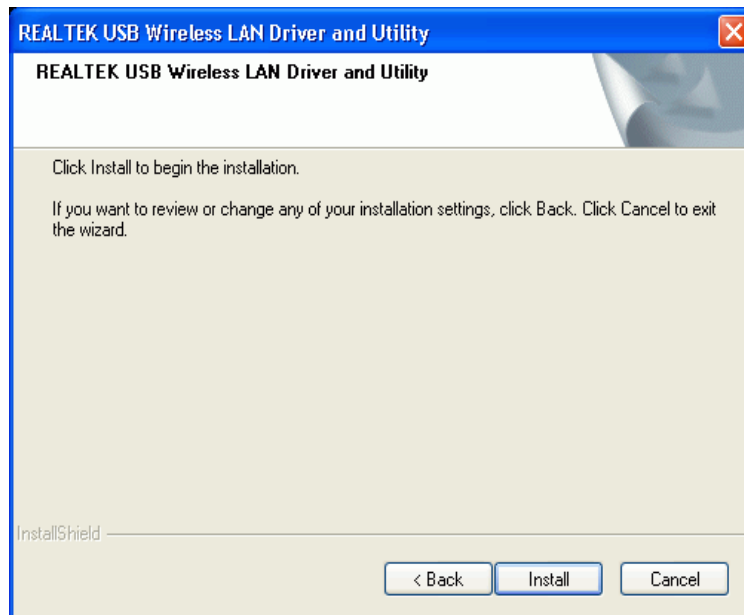
Step2: Wireless LAN Driver and Utility

Wizard program prompts Wireless LAN Driver and Utility Information. Click Next to proceed.



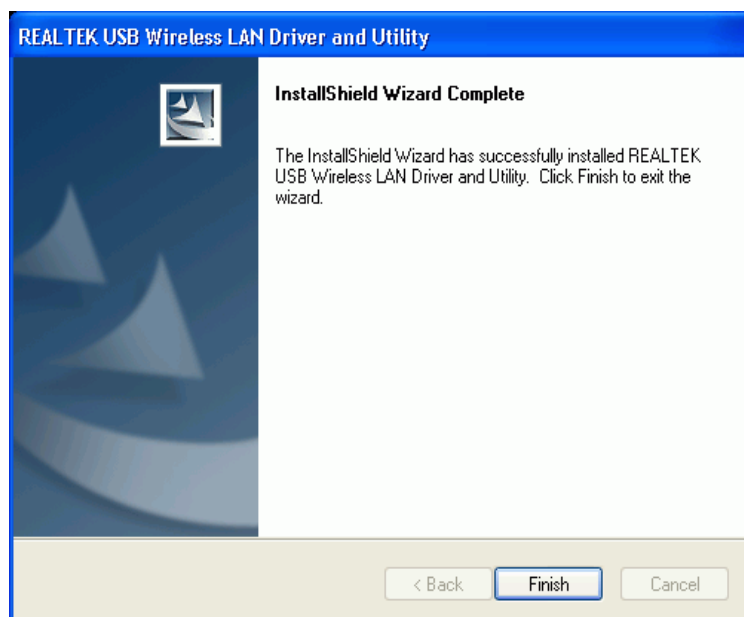
Step3: Installation

Click Install button to do installation.



Step4: Finish

Click Finish to close installation wizard.

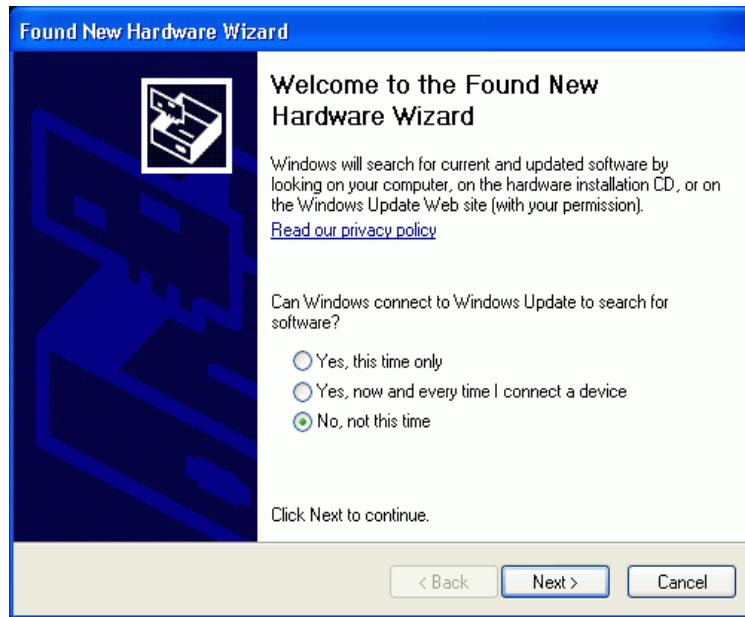


Step5: Plug Wireless LAN Adapter to USB connector.

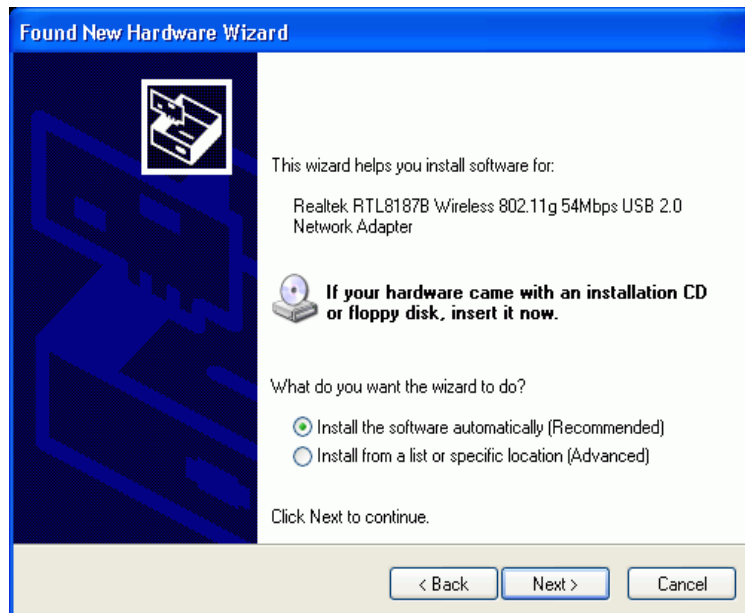
Driver Setup without WHQL (Optional)

Chipset vendor may provide the driver without WHQL. Please refer the following steps to setup.

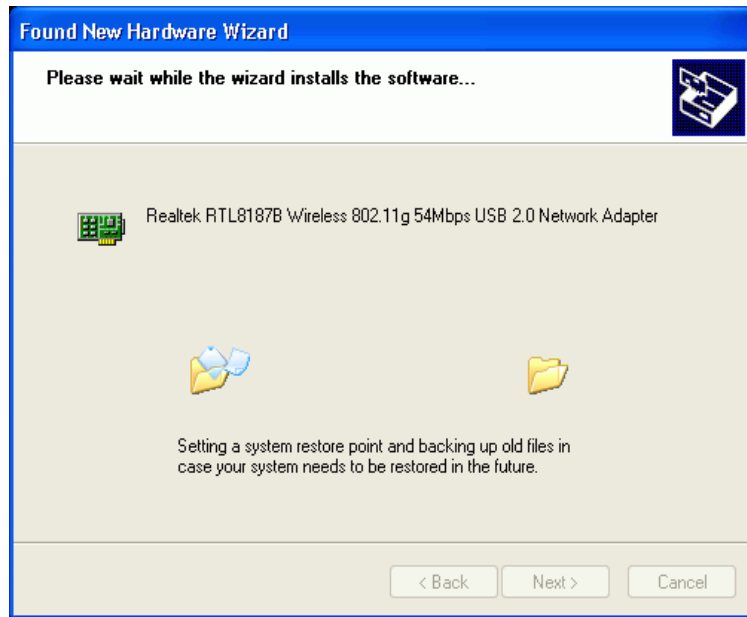
Step 1:



Step2:



Step 3:



Step 4:

