



HD NETWORK SURVEILLANCE CAMERA

INSTALLATION GUIDE

Please read instructions thoroughly before operation and retain it for future reference.

IMPORTANT SAFEGUARD



All lead-free products offered by the company comply with the requirements of the European law on the Restriction of Hazardous Substances (RoHS) directive, which means our manufacture processes and products are strictly "lead-free" and without the hazardous substances cited in the directive.



The crossed-out wheeled bin mark symbolizes that within the European Union the product must be collected separately at the product end-of-life. This applies to your product and any peripherals marked with this symbol. Do not dispose of these products as unsorted municipal waste. Contact your local dealer for procedures for recycling this equipment.

Trademark Acknowledgements

iPhone® is the registered trademark of Apple Inc.

BlackBerry® and related trademarks, names and logos are the property of Research In Motion Limited and are registered and/or used in the U.S. and countries around the world. Used under license from Research In Motion Limited.

Android™ is a trademark of Google Inc. Use of this trademark is subject to Google Permissions.

Windows Mobile & Symbian mentioned in this document are the registered trademarks of their respective holders.

Disclaimer

We reserve the right to revise or remove any content in this manual at any time. We do not warrant or assume any legal liability or responsibility for the accuracy, completeness, or usefulness of this manual. The content of this manual is subject to change without notice.

MPEG4 Licensing

THIS PRODUCT IS LICENSED UNDER THE MPEG4 VISUAL PATENT PORTFOLIO LICENSE FOR THE PERSONAL AND NON-COMMERCIAL USE OF A CONSUMER FOR (i) ENCODING VIDEO IN COMPLIANCE WITH THE MPEG4 VISUAL STANDARD ("MPEG-4 VIDEO") AND/OR (ii) DECODING MPEG4 VIDEO THAT WAS ENCODED BY A CONSUMER ENGAGED IN A PERSONAL AND NON-COMMERCIAL ACTIVITY AND/OR WAS OBTAINED FROM A VIDEO PROVIDER LICENSED BY MPEG LA TO PROVIDE MPEG4 VIDEO. NO LICENSE IS GRANTED OR SHALL BE IMPLIED FOR ANY OTHER USE. ADDITIONAL INFORMATION INCLUDING THAT RELATING TO PROMOTIONAL INTERNAL AND COMMERCIAL USES AND LICENSING MAY BE OBTAINED FROM MPEG LA, LLC. SEE [HTTP://WWW.MPEGLA.COM](http://www.mpegla.com).

GPL Licensing



This product contains codes which are developed by Third-Party-Companies and which are subject to the GNU General Public License ("GPL") or the GNU Lesser Public License ("LGPL").

The GPL Code used in this product is released without warranty and is subject to the copyright of the corresponding author.

Further source codes which are subject to the GPL-licenses are available upon request.

We are pleased to provide our modifications to the Linux Kernel, as well as a few new commands, and some tools to get you into the code. The codes are provided on the FTP site, and please download them from the following site or you can refer to your distributor.

TABLE OF CONTENTS

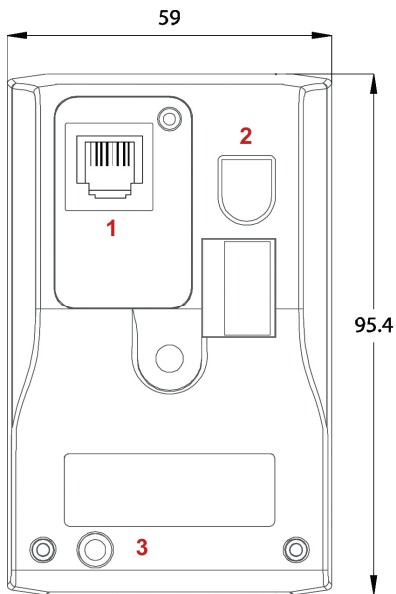
1. OVERVIEW	4
1.1 Package content.....	4
1.2 Rear Panel	4
1.3 Status Indicator.....	5
2. INSTALLATION & CONNECTION	6
2.1 Install the camera.....	6
2.2 Connect to power	6
3. CAMERA ACCESS AND NETWORK CONFIGURATION.....	6
3.1 Network connection via LAN.....	6
3.2 Camera access via web browser	10
3.3 Video adjustment.....	11
3.4 Network configurations.....	12
3.4.1 Network environment setting.....	12
3.4.2 Internet access setting.....	12
3.4.3 DDNS setting	13
APPENDIX 1 CREATING AN ACCOUNT FOR DDNS SERVICE.....	14
APPENDIX 2 MOBILE SURVEILLANCE VIA EAGLEEYES	16
A2.1 Prerequisites	16
A2.2 Where to download	16

1. OVERVIEW

1.1 Package content

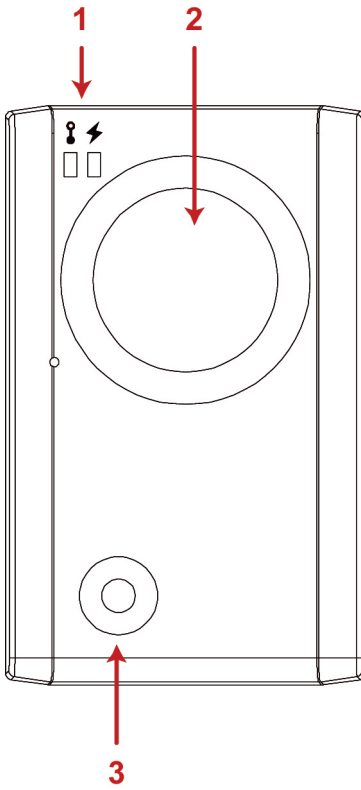
- | | |
|---|---|
| <input type="checkbox"/> Network camera | <input type="checkbox"/> Camera Bracket |
| <input type="checkbox"/> Installation Guide | <input type="checkbox"/> Adapter |
| <input type="checkbox"/> CD-ROM disc (including user manuals & CMS software "Video Viewer") | |

1.2 Rear Panel





1	Ethernet:	Connect your network cable.
2	DC 5V:	Connect the supplied regulated power supply.
3	Reset:	With the power connected, press and hold for a few seconds to reset all parameters, including the IP address to factory default settings. The camera will reboot after default reset. You may check the blinking frequency of the LED indicator to know if the camera is in the reset default mode. Please do not disconnect your camera during the reset process.

1.3 Status Indicator



1	Status Indicator
2	Camera Lens
3	White LED

ICON	 LAN connection status	 Internet connection status
System Status		
During powering on	Always on	Always on
Reset default	Blinking (on 250 ms, off 250 ms) ●○○●○○●○○●○○	Always off
Upgrade	Blinking (on 250 ms, off 250 ms) ●○○●○○●○○●○○	Blinking (on 250 ms, off 250 ms) ●○○●○○●○○●○○
Connection Status		
LAN connected	Always on	--
LAN disconnected	Blinking (on 100 ms, off 500 ms) ●○○●○○●○○	--
Internet connected	--	Always on
Internet disconnected	--	Blinking (on 100 ms, off 500 ms) ●○○●○○●○○

* LED blinking frequency - ● LED on / ○ LED off

2. INSTALLATION & CONNECTION

2.1 Install the camera

1. Find the bracket and its accessories supplied with the camera.
2. Attached the base of the bracket (the round one) to where you want to install this camera, and fasten it with the supplied screws.
3. Assemble the bracket as illustrated below, and adjust the angle of the camera.



2.2 Connect to power

Connect the supplied power adapter to the camera's power jack (DC 5V) on the rear panel and the power outlet.

3. CAMERA ACCESS AND NETWORK CONFIGURATION

Before using this network camera, please follow the instructions below to finish the network connection settings based on your installation environment:

- To configure the network settings, you must connect the camera to your PC by LAN. For details, please refer to "3.1 Network connection via LAN" at page 6.
- To configure the network settings via a web browser, please refer to "**Fehler! Verweisquelle konnte nicht gefunden werden.**" at page **Fehler! Textmarke nicht definiert..**

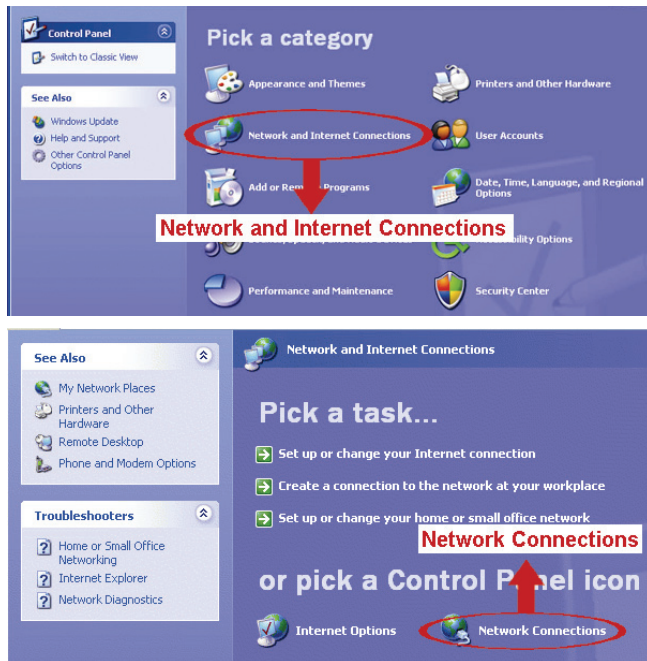
3.1 Network connection via LAN

Step1: Connect this network camera and your PC via a RJ45 network cable, and make sure the camera is powered on.

Step2: Set the PC's IP address as "192.168.1.XXX" (1~255, except 10).

For Windows XP users:

a) Select “start” → “Control Panel” → “Network and Internet Connections” → “Network Connections” (If you’re in “Category View”).



In “LAN or High-Speed Internet”, right-click on “Local Area Connection”, and select “Properties”.



Note: If your local area connection is not enabled, please also enable it.


b) In the “General” tab, select “Internet Protocol (TCP/IP)”, and select “Properties”.

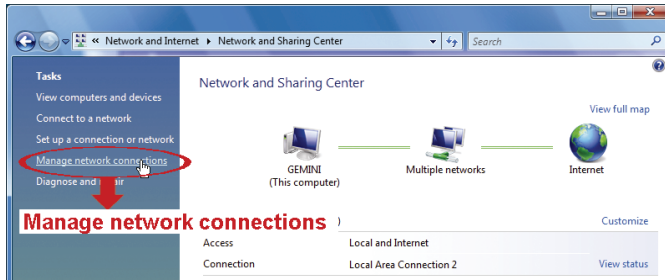
c) In the “General” tab, select “Use the following IP address”, and set the IP address to “192.168.1.XXX” (XXX can be any value from 1~255 except 10).

Note: It’s recommended to note down the current settings first and then change as instructed. It’s helpful when you need to restore the PC network settings for connecting to Internet later.

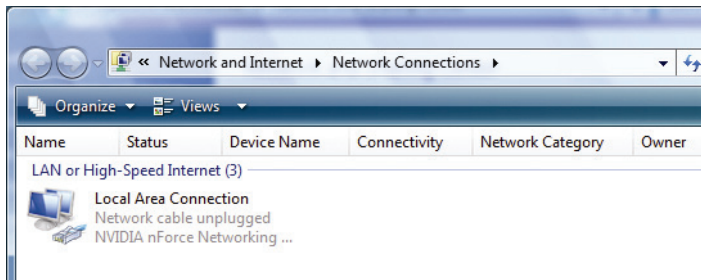
d) Click “OK” to close the “Internet Protocol (TCP/IP) Properties” dialog box. Then, click “Close” to close the “Local Area Connection Properties” dialog box.

For Windows Vista users:

- a) Select “” (start) → “Control Panel” → “Network and Internet” to enter the “Network and Sharing Center”. Then, click “Manage network connections” (If you’re in “Category View”).



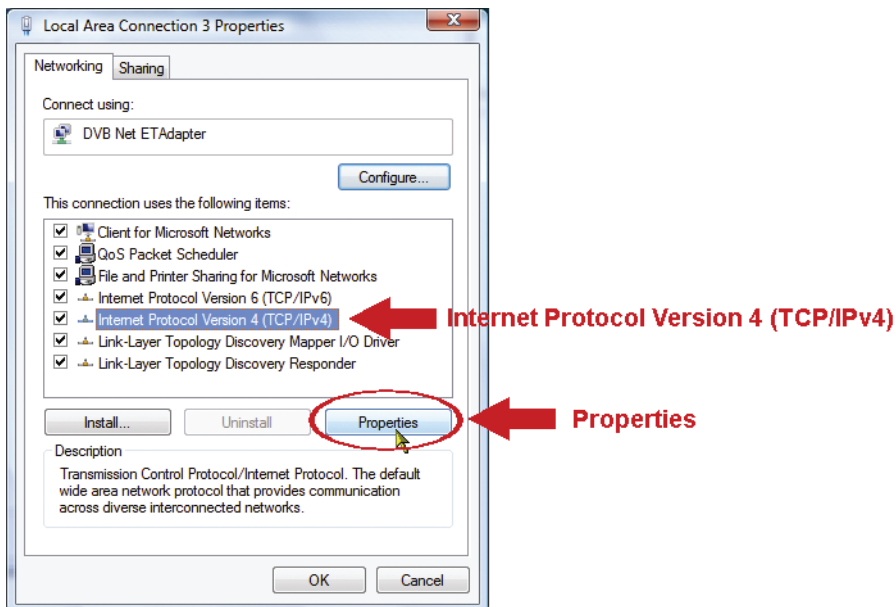
- b) Right-click on “Local Area Connection”, and select “Properties”.

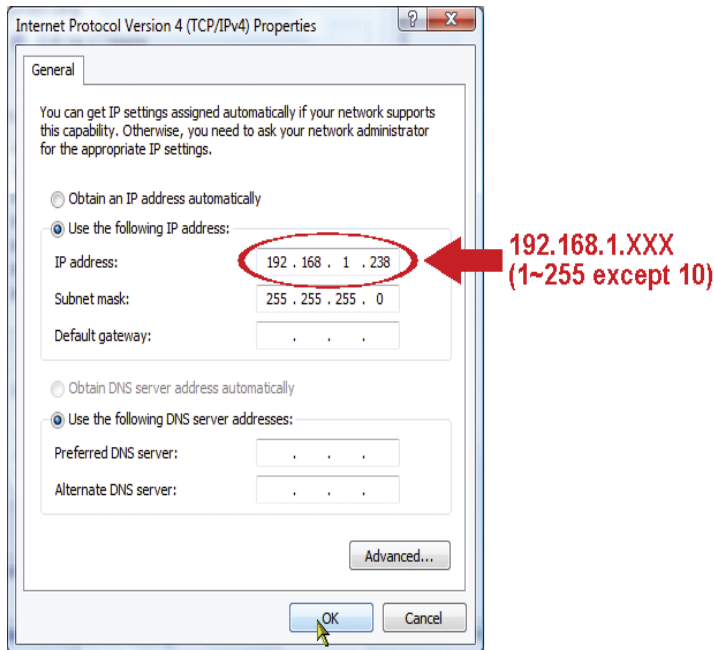


Note: If your local area connection is not enabled, please also enable it.

- c) In the “Networking” tab, select “Internet Protocol Version 4 (TCP/IPv4)”, and select “Properties”.
- d) In the “General” tab, select “Use the following IP address”, and set the IP address as described below.


Note: It’s recommended to note down the current settings first and then change as instructed. It’s helpful when you need to restore the PC network settings for connecting to Internet later.

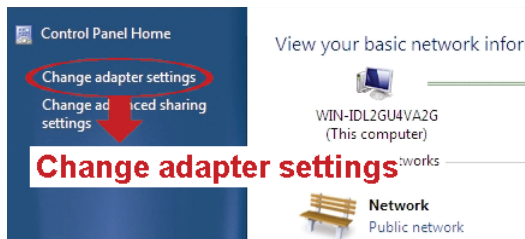




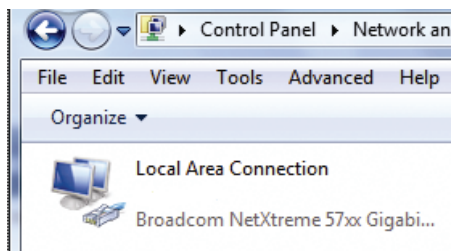
e) Click “OK” to close the “Internet Protocol Version 4 (TCP/IPv4) Properties” dialog box. Then, click “Close” to close the “Local Area Connection Properties” dialog box.

For Windows 7 users:

a) Select “” (start) → “Control Panel” → “Network and Internet” to enter the “Network and Sharing Center”. Then, click “Change adapter settings”.



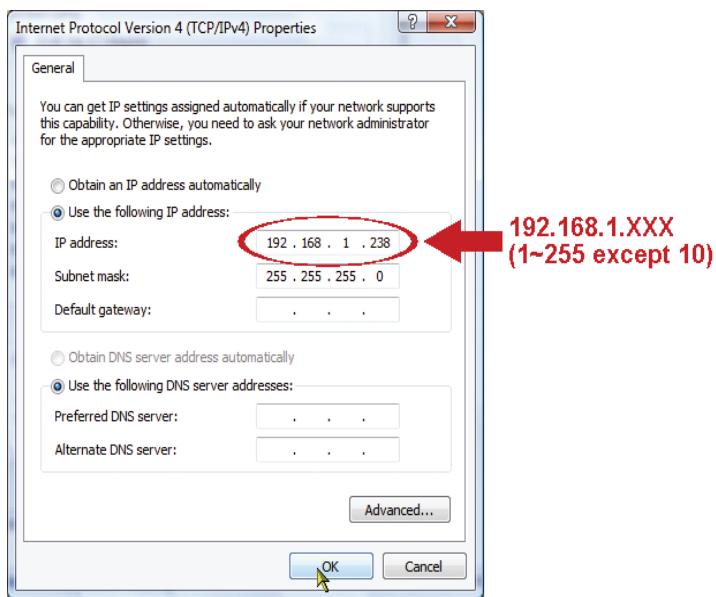
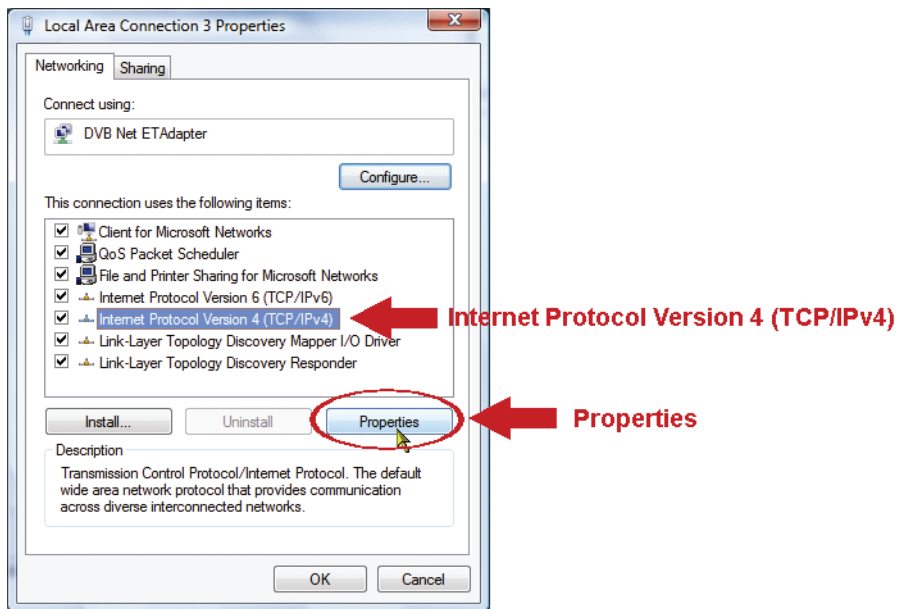
b) Right-click on “Local Area Connection”, and select “Properties”.



Note: If your local area connection is not enabled, please also enable it.

- c) In the “Networking” tab, select “Internet Protocol Version 4 (TCP/IPv4)”, and select “Properties”.
- d) In the “General” tab, select “Use the following IP address”, and set the IP address as described below.

Note: It’s recommended to note down the current settings first and then change as instructed. It’s helpful when you need to restore the PC network settings for connecting to Internet later.



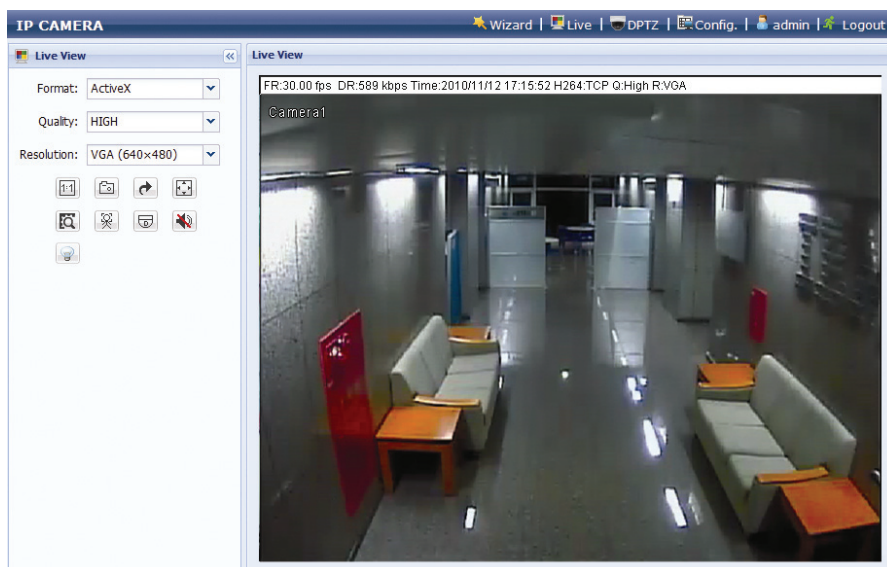
e) Click “OK” to close the “Internet Protocol Version 4 (TCP/IPv4) Properties” dialog box. Then, click “Close” to close the “Local Area Connection Properties” dialog box.

3.2 Camera access via web browser

Step1: Open your web browser, for example, Microsoft Internet Explorer, and enter “<http://192.168.1.10>” in the URL address box.

Step2: In the login page, key in the default user name (*admin*) and password (*admin*), and enter the security code from the image below. Then, click “LOGIN” to log into the camera and check the live view.

Note: Skip the wizard if any.



3.3 Video adjustment

When you’ve accessed the camera successfully, it’s recommended to adjust the video images if needed.

- To adjust the clearness of the video, rotate the camera lens manually as shown in *Figure 1*.
- To slightly adjust the color of the video, in the live page of your web browser, click “Config” on the top right side of the browser to open the configuration page.

Then, click “Camera” → “Color” to adjust the brightness / contrast / hue / saturation of the video images, as shown in *Figure 2*.



Rotate

Figure 1

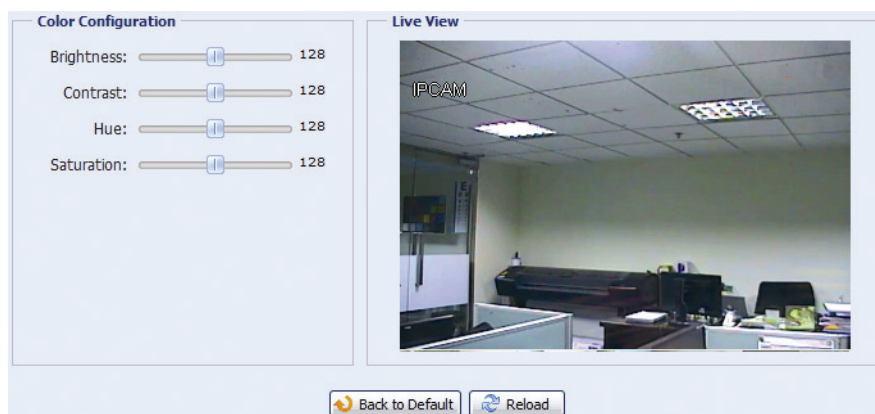


Figure 2

3.4 Network configurations

3.4.1 Network environment setting

Step1: Click “Config” in the live view page of your browser to enter the configuration page. Then, click “Camera” → “Camera”.

Step2: In this page, define your installation environment as indoor or outdoor, and set other parameters related to your network environment.

Item	Description
Environment	Select the current environment for the camera to automatically adjust itself to produce the images suitable for the selected environment.
Frame Rate	The frame rate allowed to each viewer can be adjusted to adapt to the bandwidth on the network. Set the desired image frequency to the maximum (FULL) or to a specified frame rate (1/2; 1/3; 1/4; 1/5; 1/10; 1/15). The actual frame rate depends on the actual network connection, and may be lower than the specified one.
Stream Format	Select the stream format to H.264 / MPEG-4 / Motion JPEG / Multi-Mode suitable for your network bandwidth. <i>Note:</i> 1. Motion detection is not supported when the stream format is set to Motion JPEG. 2. Face detection is not supported when the stream format is set to Multi-Mode.
ADSL Upload Speed	Select your Internet upload speed, and the system will automatically adjust your data flow. The options are: Local (>2Mbps) / 2M (2000Kbps) / 1M (1000Kbps) / 640Kbps / 512 Kbps / 256Kbps / 128 Kbps / 64Kbps

3.4.2 Internet access setting

Step1: Click “Network” → “Network” to select the connection type: Static IP / PPPoE / DHCP.

Note: This camera doesn’t support POE router or hub.

For Static IP:

- a) Enter the information of “Server IP”, “Gateway” and “Net Mask” obtained from your ISP (Internet Service Provider).
- b) Enter the port number. The valid number ranges from 1 to 9999. The default value is 80. Typically, the TCP port used by HTTP is 80. However in some cases, it is better to change this port number for added flexibility or security.
- c) Click “Save” to save your network configurations, and log out.
- d) Disconnect your camera and your PC, and connect them to Internet separately. Then, enter the IP address or host name you just note down in the URL address box of the web browser, and see if you can access the camera successfully.

For PPPOE:

- a) Enter the user name and password obtained from your ISP, and click “Save”.
- b) Continue the DDNS setting as instructed in “3.4.3 DDNS Setting”.

For DHCP:

- a) Before selecting this option, you need to finish the DHCP router settings first.
Get a router and connect it to the Internet via your PC (with Static IP or PPPoE setting). There are different setting methods for different routers. Please refer to their respective user manuals.
- b) Continue the DDNS setting as instructed in “3.4.3 DDNS Setting”.

3.4.3 DDNS setting

Step1: Click “Network” → “DDNS”, and check “DDNS Enable”.

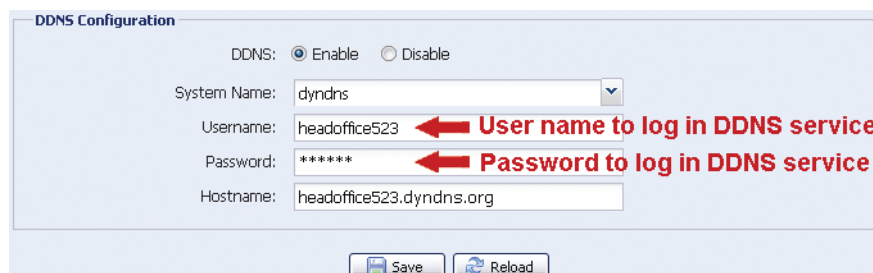
Step2: Select the host name you applied for a DDNS service in “System Name” (ex. dyndns).

Note: You need to create a DDNS account from a website which provides free DDNS service. For details, please refer to “**Fehler! Verweisquelle konnte nicht gefunden werden.**” at page 12.

Select the system name you set when subscribing the DDNS service from the drop-down list, for example, dyndns.

Enter the user name & password you used to log into the DDNS service.

Then, enter the host name you set when subscribing the DDNS service, for example, headoffice523.



Step3: Click “Save” and log out. Then, disconnect your camera and your PC, and connect them to Internet separately.

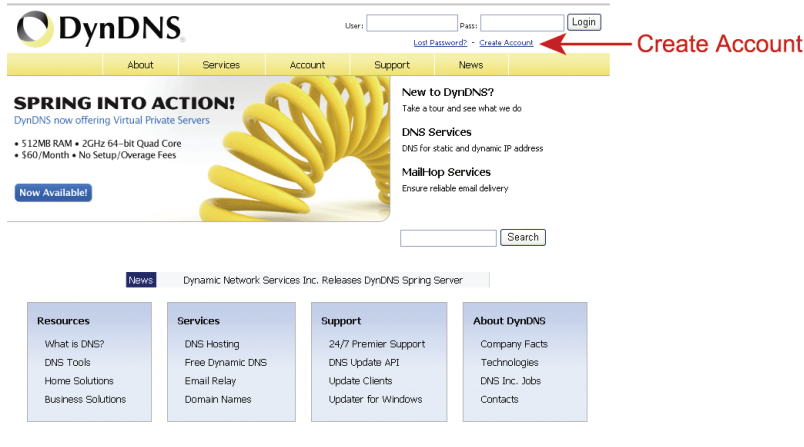
Step4: Enter the host name you just note down in the URL address box of the web browser, and see if you can access the camera successfully.

APPENDIX 1 CREATING AN ACCOUNT FOR DDNS SERVICE

For PPPOE or DHCP, you should enter the host name which points to the IP address of your network camera for login first.

There are many websites for free DDNS service application, and below shows an example of DDNS account application from the website <http://www.dyndns.com>.

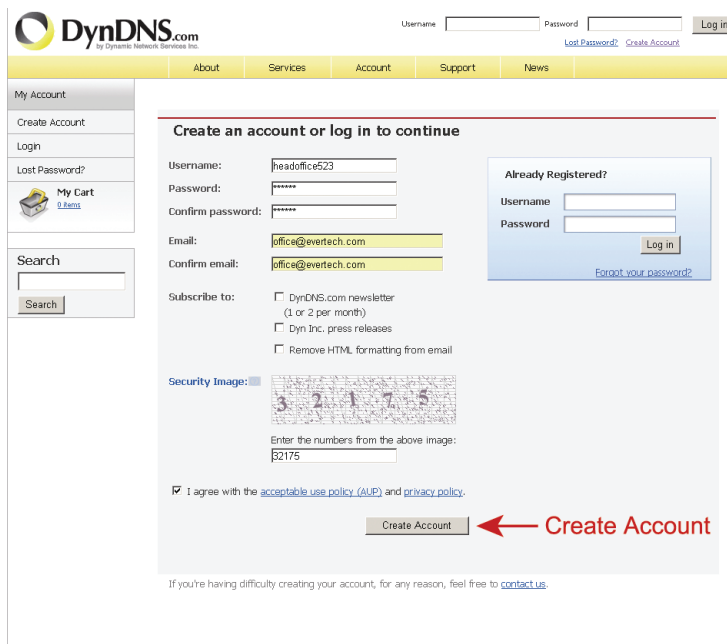
Step1: Go to <http://www.dyndns.com>, and click “Create Account” to sign up a DDNS account.



Step2: Enter all the information necessary for signing up an account according to the website instructions.

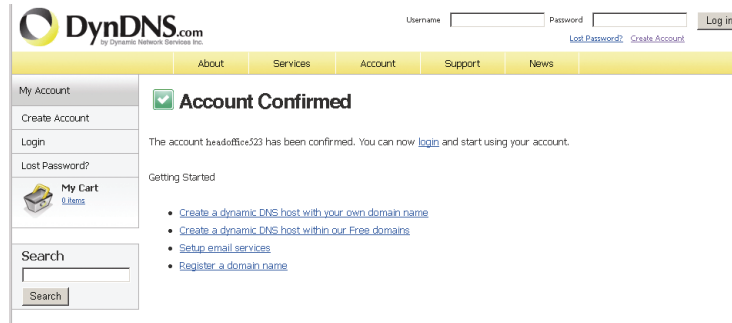
- Key in a user name for login, for example, *headoffice523*.
- Set the password and input it again to confirm.
- Key in your E-mail address and input it again to confirm.

Then, click “Create Account”.



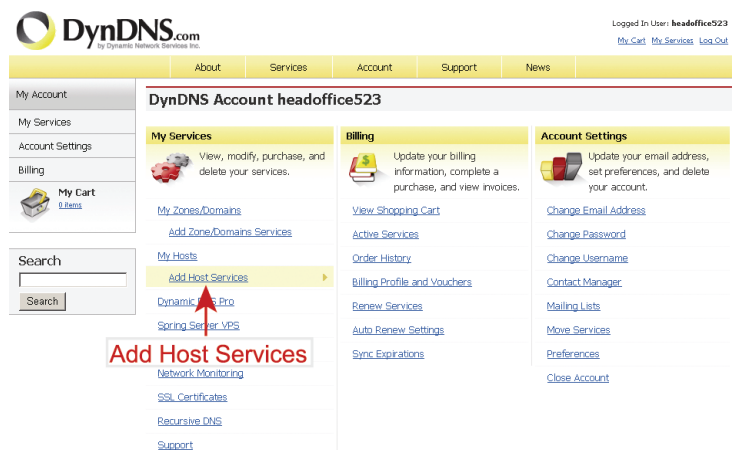
Step3: The system will automatically send a confirmation email to your email account. Please read this email within 48 hours and complete the procedure to activate your account according to the instructions in the email.

When the account is confirmed, you will see “Account Confirmed”. Your account is created successfully now.



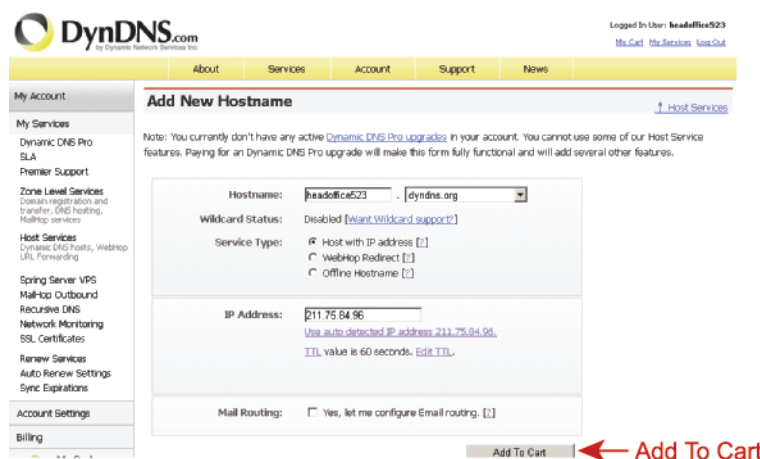
Step4: Click “login”, and enter the user name and password you preset before to log in.

Step5: Click “Add Host Services”.



- Input a meaningful host name.
- Choose a host system name.
- Enter the IP address you want to redirect.

Note down the whole host name, for example, *headoffice523.dyndns.org*. Then, click “Add To Cart” for billing.



Note: This service is free. Just finish the billing process, and **NO** paying information is required.

Step6: Click “Activate Services” after checkout, and you’re ready to use DDNS services now.

APPENDIX 2 MOBILE SURVEILLANCE VIA EAGLEEYES

EagleEyes is a mobile phone program used with our surveillance system (DVRs or network cameras) for remote surveillance. It has several advantages:

- It's free (Except *EagleEyes Plus* for iPhone).
- It's compatible with several popular mobile platforms, such as iPhone, BlackBerry, Symbian, Windows Mobile and Android.

It's easy to download, install and configure. For more details about configuring and operating this program, please visit our official website www.eagleeyesccctv.com.

A2.1 Prerequisites

Before installing *EagleEyes* to your mobile phone for remote surveillance, make sure you have checked the following:

- ✓ Your mobile platform is iPhone, BlackBerry, Symbian, Windows Mobile & Android.
- ✓ Mobile Internet services are subscribed and available to use for your mobile phone.

Note: You might be charged for Internet access via wireless or 3G networks. For the Internet access rate details, please check with your local network operator or service provider.

- ✓ Your DVR or network camera is powered on and connected to Internet.
- ✓ You have noted down the IP address, port number, user name and password used to access your DVR or network camera from Internet.

A2.2 Where to download

Connect to www.eagleeyesccctv.com from your mobile phone, and sign in.

Note: Please **DO NOT** try to download *EagleEyes* from your computer.

Then, select "Software" and the mobile platform of your phone to download *EagleEyes* to your phone.

- For BlackBerry, Symbian, Windows Mobile & Android, select the download link from the website to start downloading.

Note: It's recommended to download *EagleEyes* for BlackBerry with the web browser of Opera.

- For iPhone, two versions of *EagleEyes* are available:
 - *EagleEyes Plus* (US\$4.99), and
 - *EagleEyes Lite* (Free).

Select the version you want, and you'll be directed to "App Store" to download the application.

Note: You can also find *EagleEyes* on "App Store" from your iPhone. Go to "App Store", and select "Search". Enter the keyword "eagleeyes" to find and download the version you want.

[iPhone](#)
[BlackBerry](#)
[Symbian](#)
[Win Mobile](#)
[More...](#)

➔ Software >> iPhone



- Download iPhone EagleEyes Lite (Free)
- Download iPhone EagleEyes Plus (US\$4.99)

EagleEyes for iPhone unleashes the power of mobile surveillance within your iPhone. Working hand in hand with AVTECH IVS range units, iPhone pushes notifications to you even when you are on the road and allows you to instantaneously logging back in your DVR to check in on your treasured property. If you have controllable cameras on site like zoom or PTZ cameras, EagleEyes for iPhone provides you the most intuitive and convenient control right at your finger tips. EagleEyes for iPhone is the best compliment to your powerful AVTECH surveillance system.

When the download is completed, *EagleEyes* will be installed automatically to the location where all applications are saved in your phone by default, or where you specify.

Note: For more details about configuring and operating this program, please visit our official [website www.eagleeyesctv.com](http://www.eagleeyesctv.com).
