

PowerLine 85Mbps Ethernet Adapter

User Manual

**Version: 1.1
(December, 2007)**

1. Product Introduction

Thank you for purchasing and using our PowerLine 85Mbps Ethernet Adapter. This device allows you to use your home or office's existing electrical wiring to create a network for multiple computers to share files or connecting DVR, X-Box or Set-top Box device to join the network, or to provide access points for broadband connectivity.

Using the existing AC outlet, you can obtain greater flexibility in arrangement of a new network with your existing wired or wireless network. No extra cost is needed.

This product complies with the HomePlug V1.0 Turbo mode standard which providing up to 85Mbps data transfer rate. It's compatible with HomePlug V1.0 products.

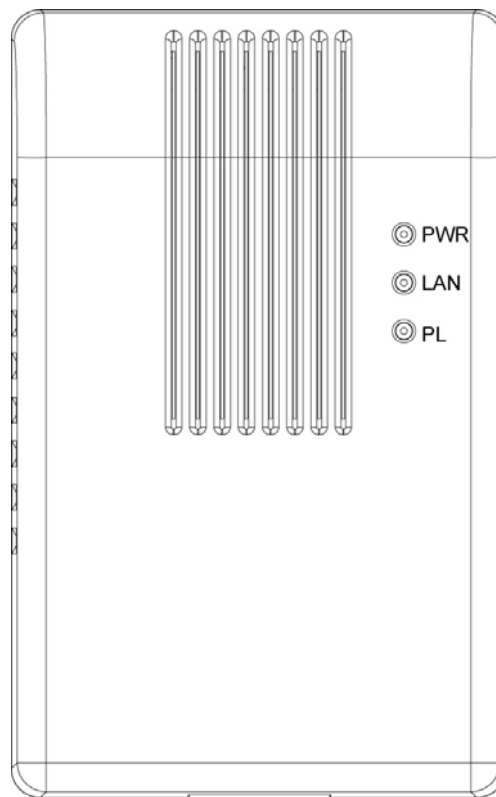
This product has been designed to save the power for you while the device is idle. It enables you to create a network easily and cost-effectively, it is a good choice for you to create a new network or rearrangement of the existing network.

2. Product Package

This package contains the following components:

- One PowerLine 85Mbps Ethernet Adapter
 - * 2pcs for one pair kit package
- One RJ-45 Cable (100cm)
 - * 2pcs for one pair kit package
- One Quick Installation Guide
- One CD-ROM (Including all the software utilities, drivers and User's Manual)

3. LED Definitions



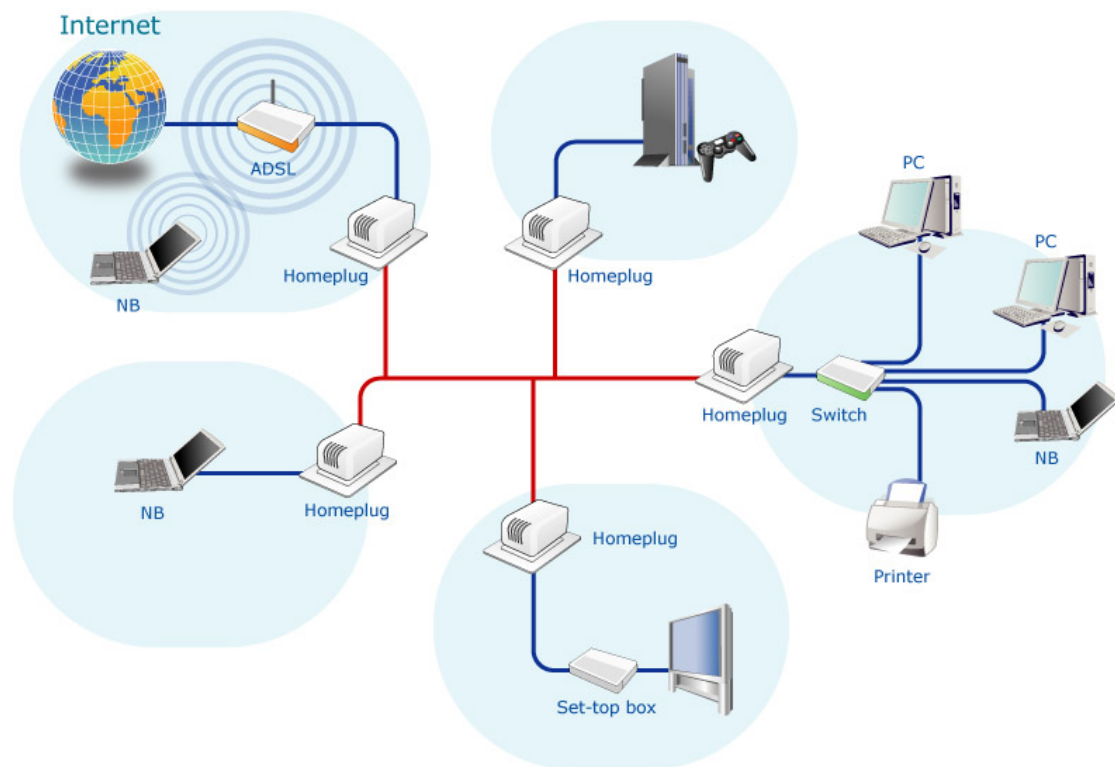
LED	Light Status	Description
PWR(Green)	On	The device is powered on.
	Off	The device is powered off or is in Power Saving mode.
LAN(Green)	On	The LAN cable is connected to the HomePlug.
	Off	No network connection.
	Blinking	Network traffic transferring or receiving
PL(Green)	On	The device detects another powerline device.
	Off	The device doesn't detect another powerline device.
	Blinking	Network traffic is transmitting via the power port of the device.

Note: The device will be in Power Saving mode when it detects no LAN connection.

4. Hardware Installation Procedure

1. Unpack the package and verify that all the items listed in the previous section are provided.
2. Connect the HomePlug product to the device which you want to add to a powerline network through the Ethernet cable.
3. Plug the HomePlug product to the power outlet.
4. This device with the HomePlug will join in the powerline network automatically.

The following is the architecture of various applications of the HomePlug products.

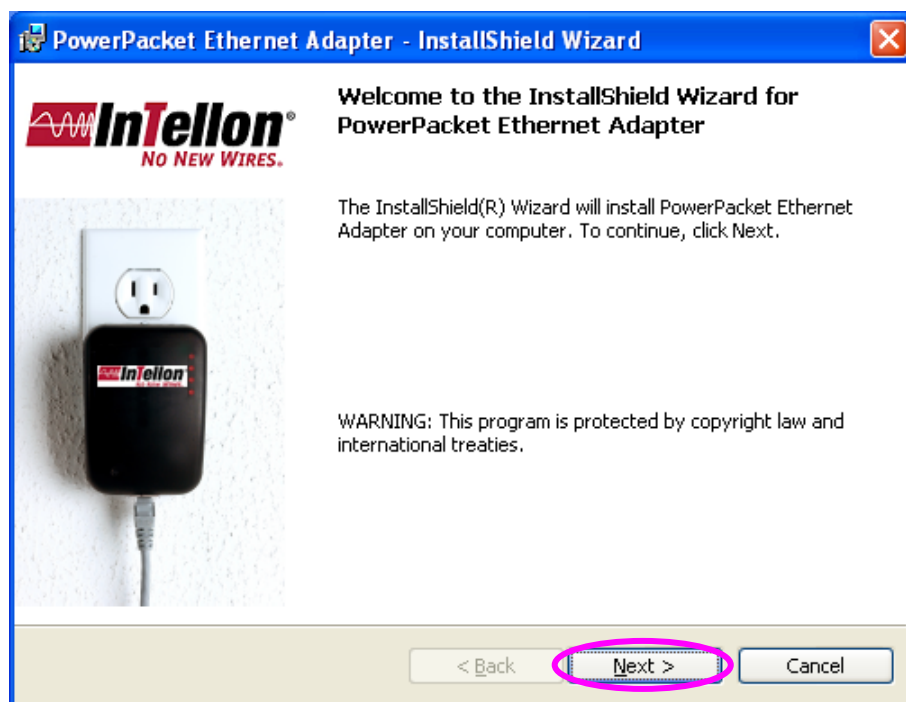


5. Software Installation Procedure

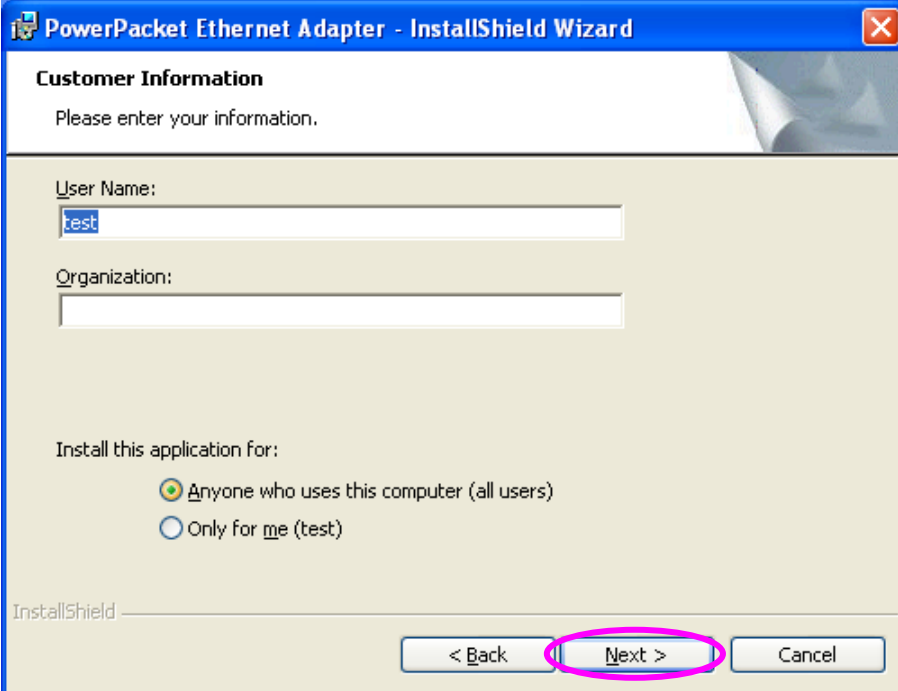
The Configuration Utility for Windows 98SE/Me/2000/XP/Vista enables the users to identify HomePlug devices within the powerline network, measures data rate performance, ensures privacy and performs diagnostics by setting user defined secure powerline networks.

Please follow the procedures below to install the utility. Please note that the following procedures are running in Windows XP, for other Windows operating systems, the procedures are similar.

1. Execute the "Setup.exe" program from "Utility" folder in the CD supplied with the product.
2. The following screen will be displayed. Click "Next".

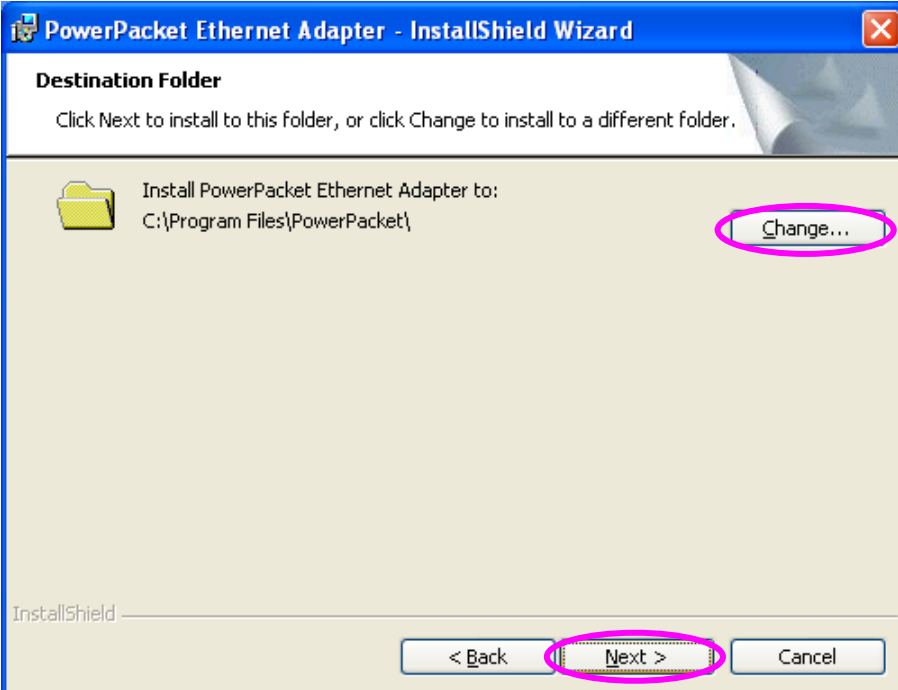


3. Please enter User Name and your company name here. If you want to install this utility only for you use, select "Only for me". Click "Next".



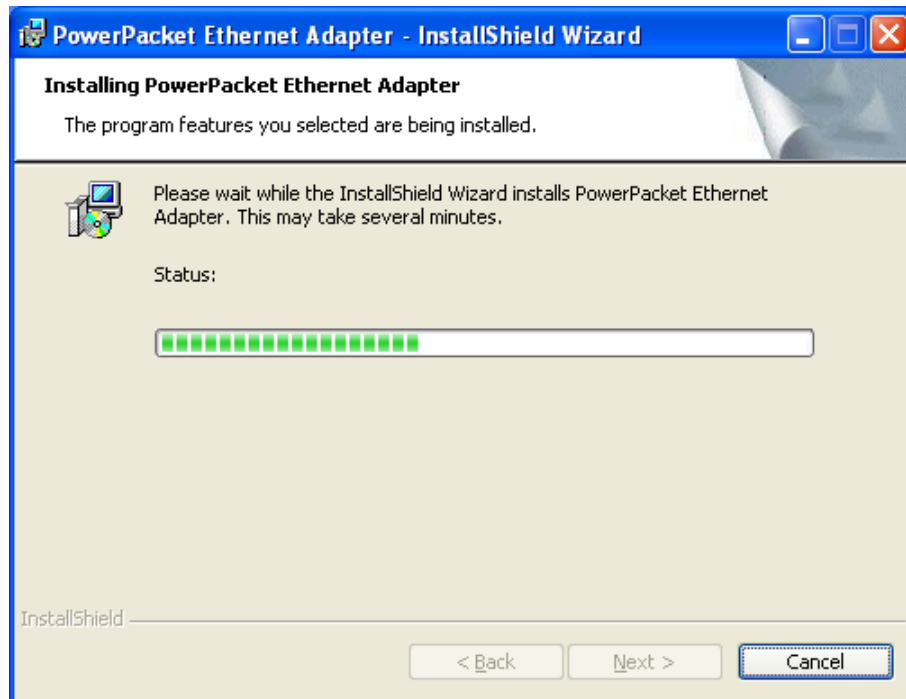
The screenshot shows the 'Customer Information' screen of the 'PowerPacket Ethernet Adapter - InstallShield Wizard'. The window title is 'PowerPacket Ethernet Adapter - InstallShield Wizard'. The main heading is 'Customer Information' with the instruction 'Please enter your information.' Below this, there are two text input fields: 'User Name:' with the text 'test' entered, and 'Organization:' which is empty. Under the heading 'Install this application for:', there are two radio button options: 'Anyone who uses this computer (all users)' (selected) and 'Only for me (test)'. At the bottom, there are three buttons: '< Back', 'Next >', and 'Cancel'. The 'Next >' button is circled in pink. The 'InstallShield' logo is visible in the bottom left corner.

4. Click "Next" to install the utility in the default folder or click "Change" to specify the destination folder where you would like to install the HomePlug utility.

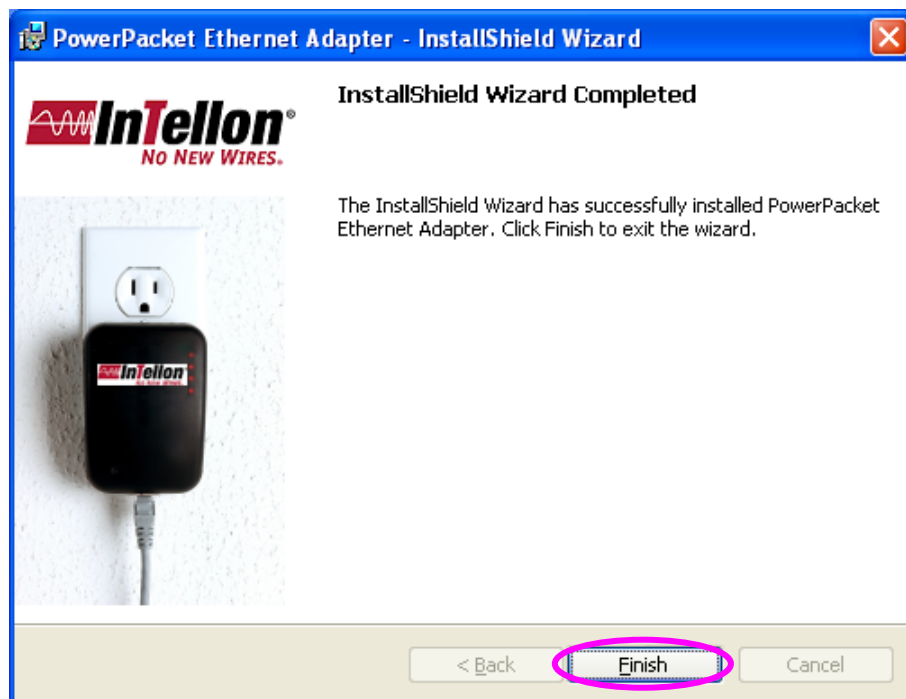


The screenshot shows the 'Destination Folder' screen of the 'PowerPacket Ethernet Adapter - InstallShield Wizard'. The window title is 'PowerPacket Ethernet Adapter - InstallShield Wizard'. The main heading is 'Destination Folder' with the instruction 'Click Next to install to this folder, or click Change to install to a different folder.' Below this, there is a folder icon and the text 'Install PowerPacket Ethernet Adapter to: C:\Program Files\PowerPacket\'. To the right of this text is a 'Change...' button, which is circled in pink. At the bottom, there are three buttons: '< Back', 'Next >', and 'Cancel'. The 'Next >' button is circled in pink. The 'InstallShield' logo is visible in the bottom left corner.

5. The system starts installing the HomePlug utility.



6. Click "Finish" to complete the installation.

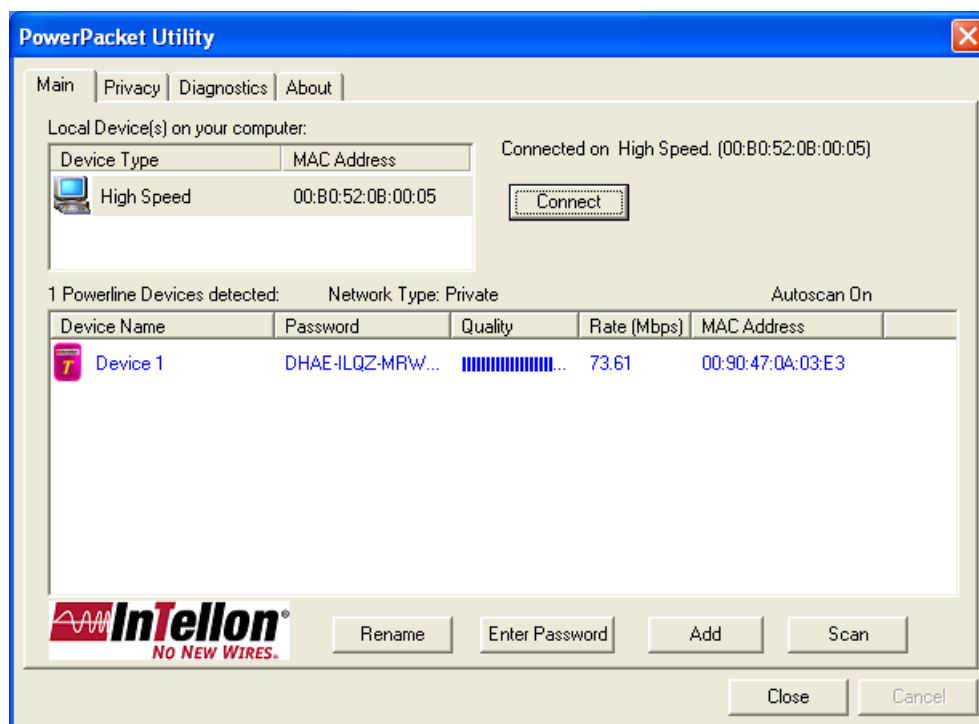


6. PowerPacket Utility

Click “Start” and select “All Programs\PowerPacket” in your computer, you will find the HomePlug utility. Please refer to the following sections for the descriptions of how to use the utility.

5.1 Main

The Main screen provides lists of all HomePlug devices logically connected to the computer when the utility is running. After connecting a HomePlug device to you computer, the utility will auto scan other HomePlug devices in the same network.



Upper Panel

The upper panel shows all local HomePlug devices connected to the computer’s NIC (Network Interface Card). In most cases, only one device will be seen. In situations where there are more than one local device being connected, such as a USB or an Ethernet adapter, the user can select the local device by clicking on it and then click the “Connect” to connect to the selected device. Once connected to the local device, the utility will automatically scan the power line periodically for any other HomePlug

devices.

Lower Panel

The lower panel displays all the HomePlug remote devices, discovered on the current logical network. In the top of the table, you can see the total number of remote devices connected on the same network, the Network type (Public or Private) of the network and the scanning status.

Device Name: shows the default device name, which may be user re-defined. A user can change the name by either clicking on the **“Rename” button** or by clicking on the name and editing in-place.

An icon is usually shown with the name. A color distinction in icons is made between HomePlug 1.0 and Turbo devices. By default, the icon is always accompanied by a device name.

Password: by default the password column is blank and **‘Enter Password’ button** can be used to enter it.

To set the Password of the device (it is required when creating a private network), first select the device by clicking on its name in the lower panel and then click on the “Enter Password”. A dialog box will appear. The selected device name is shown above the password field and the password can be verified by hitting the OK button. The Password field accepts the Device password in any case formats, with or without dashed between them.

Note 1: The device must be present on the power line (plugged in) in order for the password to be confirmed and added to the network. If the device could not be located, a warning message will be shown.

Note 2: Please find the password of the HomePlug device in the rear panel. The “DEK” code is the password.



Quality: the status of the connection quality will be shown here.

Rate (Mbps): show the current data rate of the HomePlug device.

MAC Address: the device's MAC address will be shown here.

Add Button: it is used to add a remote device to the existing network by entering the device password of the device. A dialog box will appear as below. The dialog box allows the user to enter both a device name and the password.

A confirmation box will appear if the password was entered correctly and if the device was found in the powerline network. If a device was not found, the user will be notified and suggestions to resolve common problems will be presented.



Add Device to Network

Device Name:

Password:



The Password typically appears as a number and letter code, in groups of four, separated by dashes.
(ie XK8Y-GH26-BR1K-LZSA)
It is found on the device or packaging.

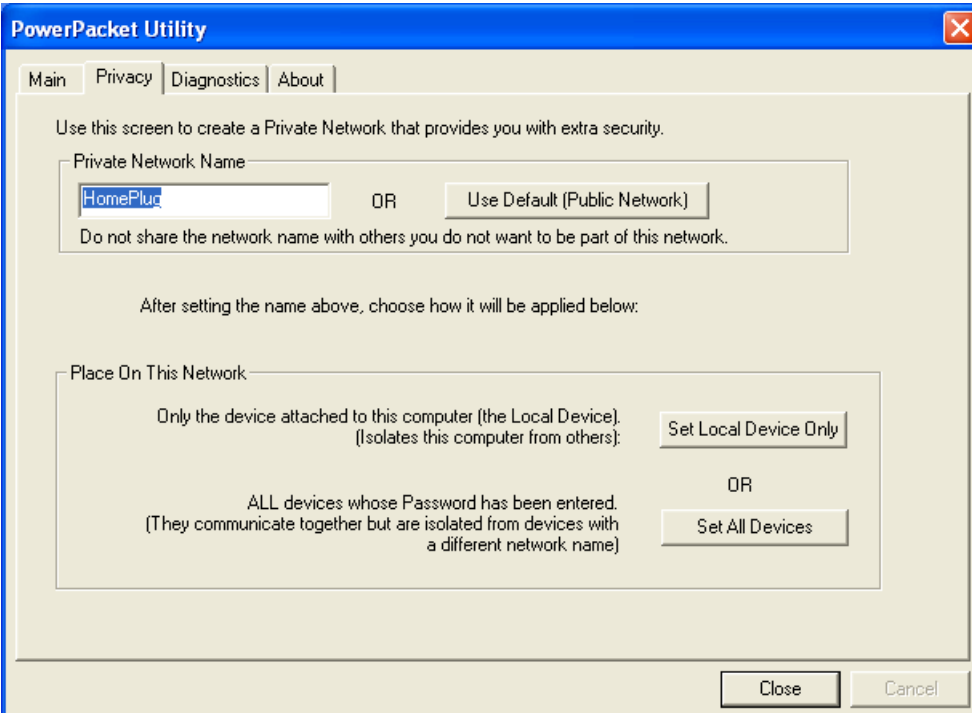
OK

Cancel

Scan Button: the button is used to perform an immediate search of the HomePlug devices connected to the Powerline network. By default, the utility automatically scans every few seconds and updates the display screen.

5.2 Privacy

The Privacy screen provides the user with an option to maintain security for their logical network and also to select the devices that has to be included in the network.



PowerPacket Utility

Main Privacy Diagnostics About

Use this screen to create a Private Network that provides you with extra security.

Private Network Name
 OR

Do not share the network name with others you do not want to be part of this network.

After setting the name above, choose how it will be applied below:

Place On This Network

Only the device attached to this computer (the Local Device).
(Isolates this computer from others):

OR

ALL devices whose Password has been entered.
(They communicate together but are isolated from devices with a different network name)

Close Cancel

Private Network Name: All HomePlug devices are shipped using a default logical network (network name), which is normally “HomePlug”. If you want to set a privacy network, change the network name.

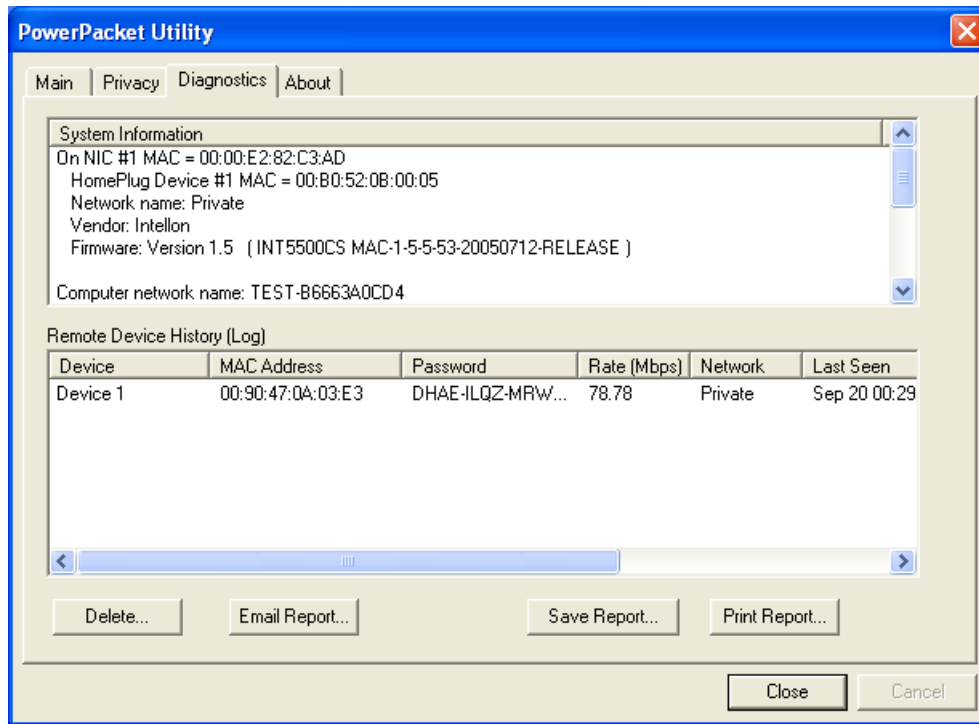
Use Default (Public Network): The user can always reset to the HomePlug network (Public) by entering “HomePlug” as the network name or by clicking on the “Use Default (Public Network)”.

Set Local Device Only: The button can be used to change the private network name to all of the local devices. If a new network name is entered, all the devices seen on the top panel of Main screen prior to this will be no longer present in the new network. You have to set the new network name to all local devices.

Set All Devices: The button is used to set the new network name (network password) to all HomePlug devices whose password has been entered for the same logical network. A dialog window will appear to report the success of this operation. For devices whose password is not entered, this operation will fail and will report a failure message.

5.3 Diagnostics

The Diagnostics screen shows System information and a history of all remote devices seen over a period of time.



Upper Panel

The Upper panel shows technical data concerning software and hardware present on the host computer which were used to communicate over HomePlug on the Powerline network. It includes powerline network name, computer user name, MAC Address of all NICs (Network interface card) connected to the computer, versions of all drivers and utilities, etc.

Lower Panel

The Lower panel contains a history of all remote devices seen on the computer over a certain period of time. All devices that were on the powerline network are listed here along with a few other parameters. Devices that are active on the current logical network will show a transfer rate in the Rate column; devices on other networks, or devices that may no longer exist are shown with a “?” in the Rate column. The following remote device information is available from the diagnostics screen:

Device Alias Name

Device MAC Address

Device Password

Device Last known rate

Device Last Known Network name

HomePlug chipset manufacturer name

Date device last seen on the network

MAC Firmware Version. (Turbo Only)

The diagnostics information displayed may be saved to a text file for later use, or can be printed for reference for a technical support call. Devices, which are not part of the network anymore, can be deleted using the delete button. A dialog window pops up with a confirmation message if we try to delete a device whose password has been entered.

5.4 About

The About screen shows the software version information. You can select “AutoScan” to turn on or off the auto-scan function.

