



# NOTEBOOK DOCKING STATION



(DC DOCK5)



(DC DOCK6)

## User's Manual

## Safety Instructions

Always read the safety instructions carefully

- ◆🕒 Keep this user's manual for future reference
- ◆🕒 Keep this equipment away from humidity
- ◆🕒 Lay this equipment on a reliable flat surface before setting it up
- ◆🕒 If any of the following situation arises, get the equipment checked by a service technician:
  - The equipment has been exposed to moisture
  - The equipment has been dropped and damaged
  - The equipment has obvious sign of breakage
  - The equipment has not working well or you cannot get it work according to this user's manual.

## Contents

A. INTRODUCTION

B. SYSTEM REQUIRMENTS

C. HARDWARE APPEARANCE AND CONNECTION

D. SOFTWARE INSTALLATION

E. OPERATIONAL NOTES ABOUT THE PORTS ON THE DOCKING STATION

### A. INTRODUCTION

This USB 2.0 Docking Station (DC DOCK5 / DC DOCK6) is a unique expansion unit specially designed to accompany notebook or desktop PC which has extra connectivity demands. With only one USB port required form a notebook/desktop PC, not only USB but also conventional SIO, LAN, PS/2, e SATA, Smart Card reader ,Audio, USB 2.0 HUB and 53 in 1 Card reader peripheral devices can be accessed freely.

DC DOCK5 / DC DOCK6 allows you to add multiple high performance USB 2.0 peripheral devices to your PC. Moreover, this product is fully backwards compatible with the USB Revision 1.1 products, which means your previous USB 1.1 devices can continue to function as well.

### Features

- 🕒⌘ Compliant with Universal Serial Bus Specifications Revision 2.0 (Data Rate 1.5/12/480 Mbps)
- 🕒⌘ Two or Five USB 2.0 downstream facing ports (Type A receptacle)
- 🕒⌘ One PS/2 keyboard port
- 🕒⌘ One PS/2 mouse port
- 🕒⌘ One e SATA port
- 🕒⌘ One serial port (DB9-pin male)
- 🕒⌘ One 10/100Base Ethernet LAN port (RJ-45)
- 🕒⌘ One 53in one Card reader

## B. SYSTEM REQUIRMENTS

### SUPPORTED O.S.:

O.S.	Function	Docking Station
	Windows® 98se	Vendor Support*2
	Windows® ME	Vendor Support*2
	Windows® 2000	Vendor Support
	Windows® XP	Vendor Support
	Windows® Vista	Vendor Support
<p>*1. The USB-PS/2 is a human interface device (HID) with the driver provided from the OS of Microsoft. Also the hub driver is from the OS. The rest peripherals 'drivers are provided within the accompanied CD-ROM.</p> <p>*2.USB Audio port cannot function under Windows® 98se/ME due to the incompatibility issue of driver.</p>		

### Specifications

Model	DC DOCK6	DC DOCK5
RS-232	Yes	Yes
Memory Card Reader	53 in 1	
Smart Card Reader		
USB 2.0 HUB	4 Port	2 Port
10/100M LAN	Yes	Yes
Audio (2 Channel)	Yes	
E-SATA	Yes	Yes
PS2(Keyboard Mouse)	Yes	Yes

Environments	Operating temperature: 0°C~40°C Storage temperature: -10°C~80~°C Humidity:90%RH(No condensing)
--------------	---------------------------------------------------------------------------------------------------

Emission	CE FCC
POWER	AC Input 100 V~240V DC Output 5V, 2.0A

## C. HARDWARE APPEARANCE and CONNECTION

### *LED Status Indicators*

Please refer to Figures 1 and 2 for the LED functional indicators and layout of ports of DC DOCK5 / DC DOCK6 docking station.

Model	LED	Color	Descriptions
DC DOCK5 / DC DOCK6	1	Red	Turned on when the docking station is powered.
	2	Green	Indicate the card reader working state

- ⌚⌘ Connect power adapter to a household AC outlet and plug the adapter's DC jack into the DC socket on the side of docking station.
- ⌚⌘ Plug the flat end (Type A receptacle) of the USB cable into a free USB port on the NB/PC.
- ⌚⌘ Plug the square end (Type B receptacle) of the USB cable into the USB upstream connector located on the side of docking station.
- ⌚⌘ At this point, Windows® OS will automatically find the docking station and start installing its drivers (called enumeration). Windows® OS will prompt you to act along the driver installation process. See the next section for details on how to install the drivers and AP

## D. SOFTWARE INSTALLATION

Please make sure that NB/PC is powered on properly and the docking station is also powered and connected to the NB/PC's USB port with a USB2.0 cable (included in the package). The NB/PC will start the enumeration process automatically. If this is the first time that a docking station connected to the NB/PC, the OS will proceed to install all the required drivers. OS will prompt user to take some action if needed. The driver installation process is only needed for the very first time of connecting docking station and the NB/PC and is briefly introduced in this section.

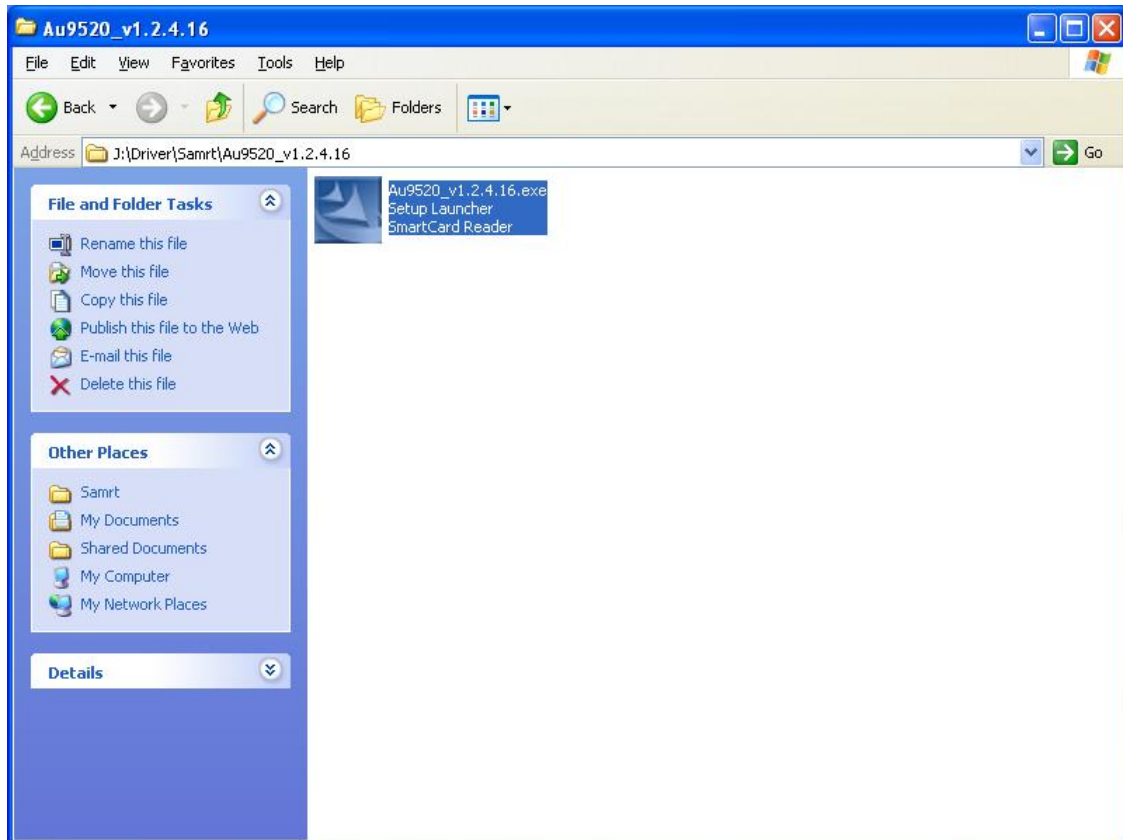
Please note that only the installation processes of Windows® XP are demonstrated here. For Windows® 98se and Windows® ME and Windows® 2000, the processes are similar, just follow the prompts on the screen can finish the installation without a problem since the OS will take care everything automatically.

Please make sure the driver CD-ROM is placed in the CD-ROM drive before proceed.

### Software Installation in Windows® XP

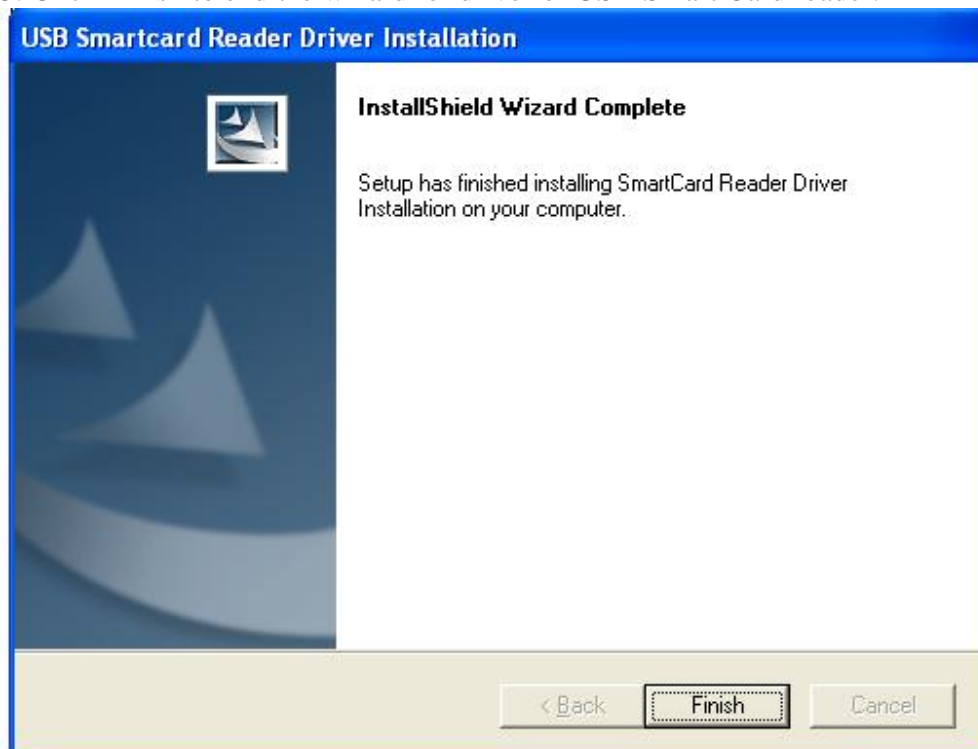
For Windows® XP, there are two drivers which need to install from the driver CD-ROM: (1). USB-LAN, (2) USB-serial port, The drivers of rest devices are provided by Windows® XP and will be installed without user's care.. Along the installation.

**Figure 18.** Select **Install the software automatically**, and click Next > to start the driver installation. Note that the name (**Au9520\_v1.2.4.16.exe**) of the device may vary due to the update of newest driver. It will not affect the function and installation of the device.





3. Click Finish to end the wizard for driver of USB Smart Card reader.



USB-Serial Driver installation, computer systems based on tips completed.



Choose "install from a list or specific location (Advanced)" Click Next to continue



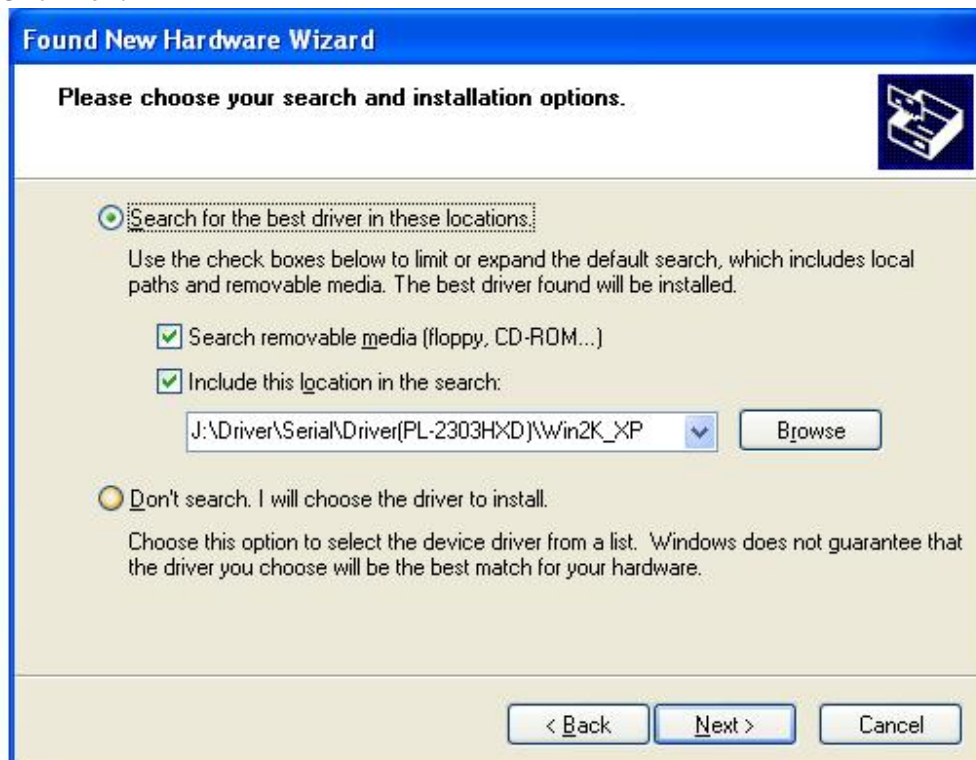
Click "Browse" Choose the driver location.



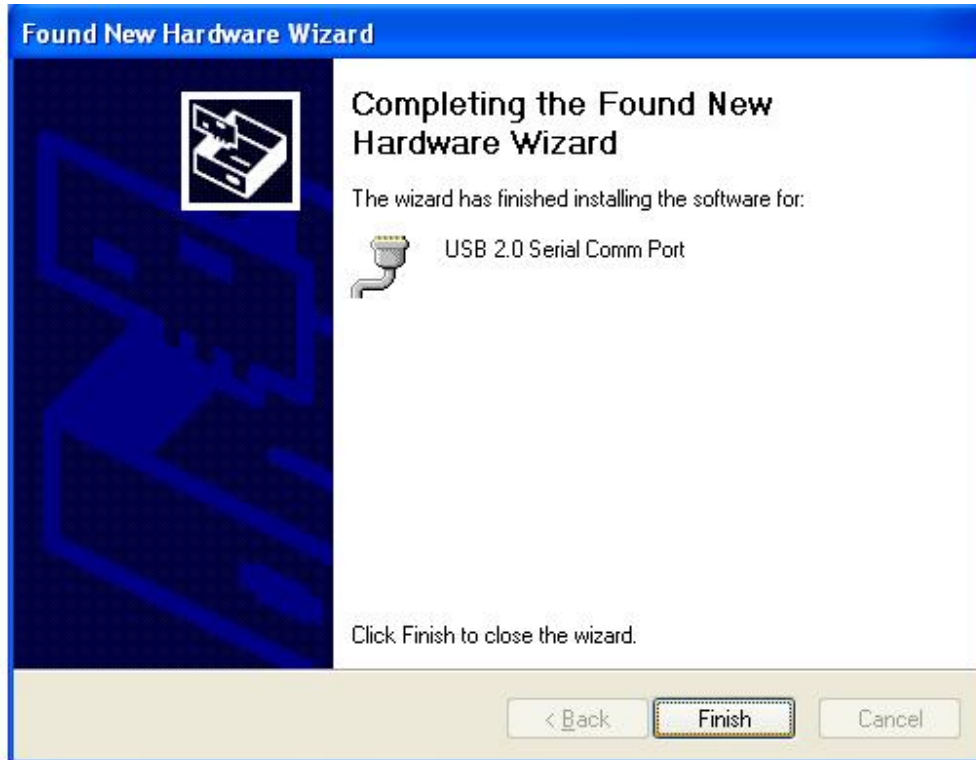




Click next



Click "Finish" to close the wizard



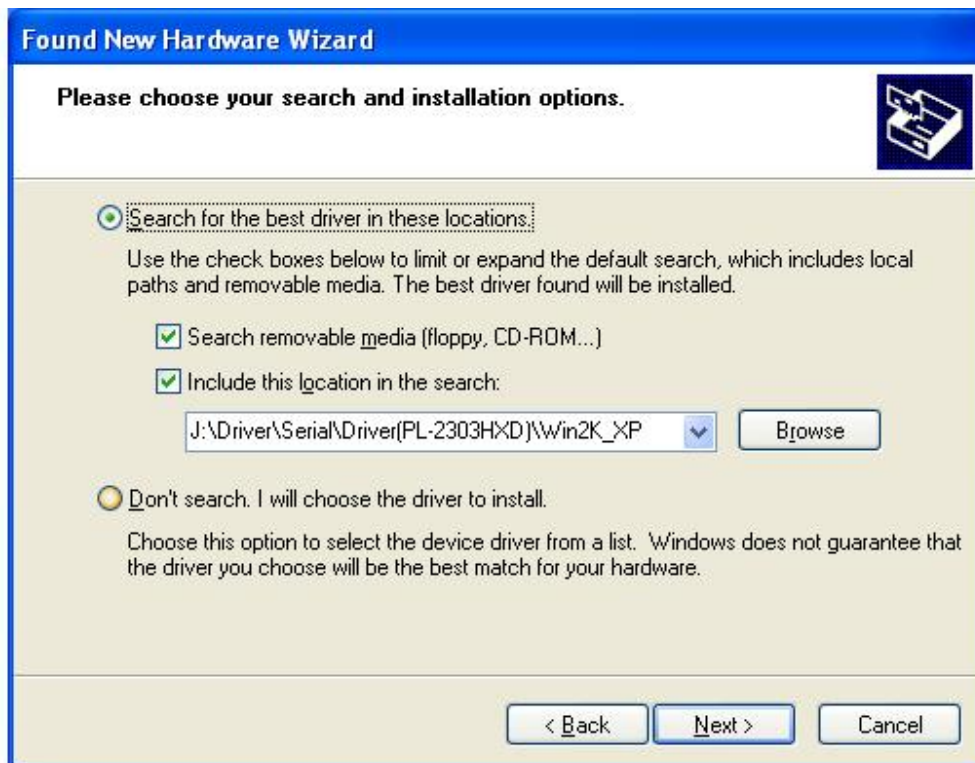
USB-LAN Driver installation, computer systems based on tips completed.



Choose “Install from a list or specific location (Advanced)” Click next to continue

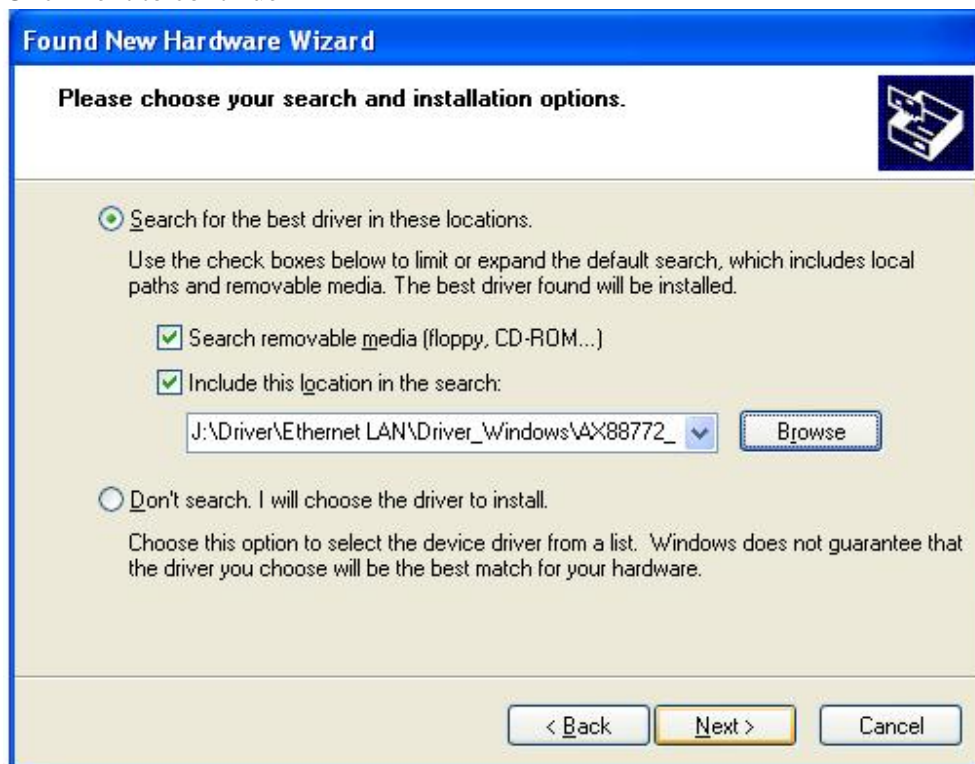


Click “Browse” Choose the driver location.

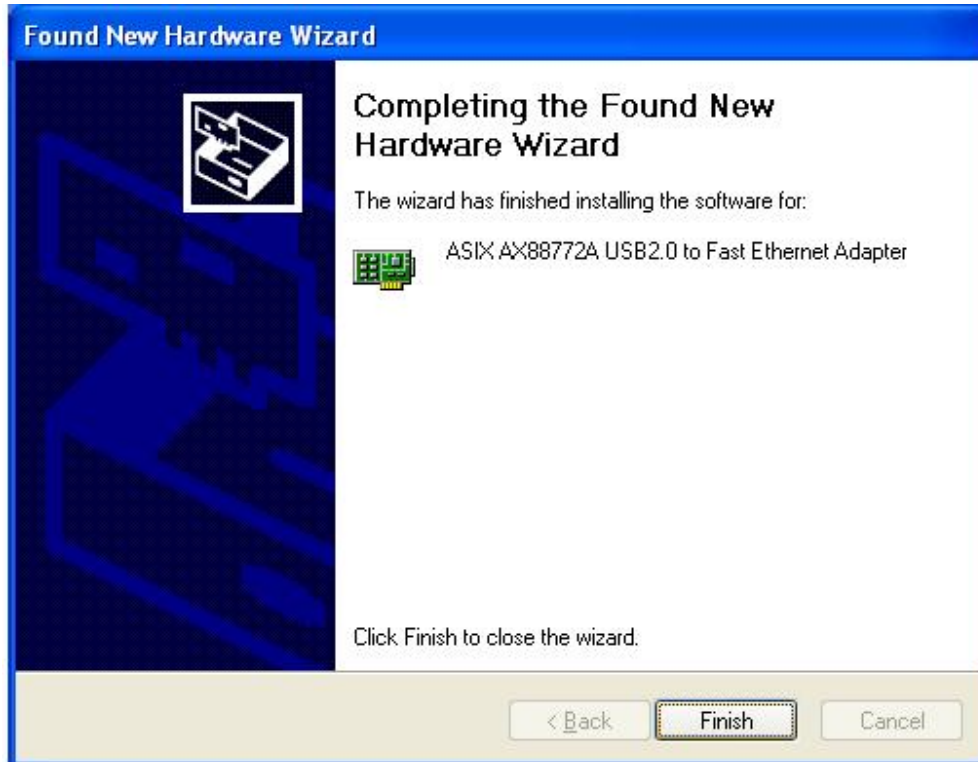




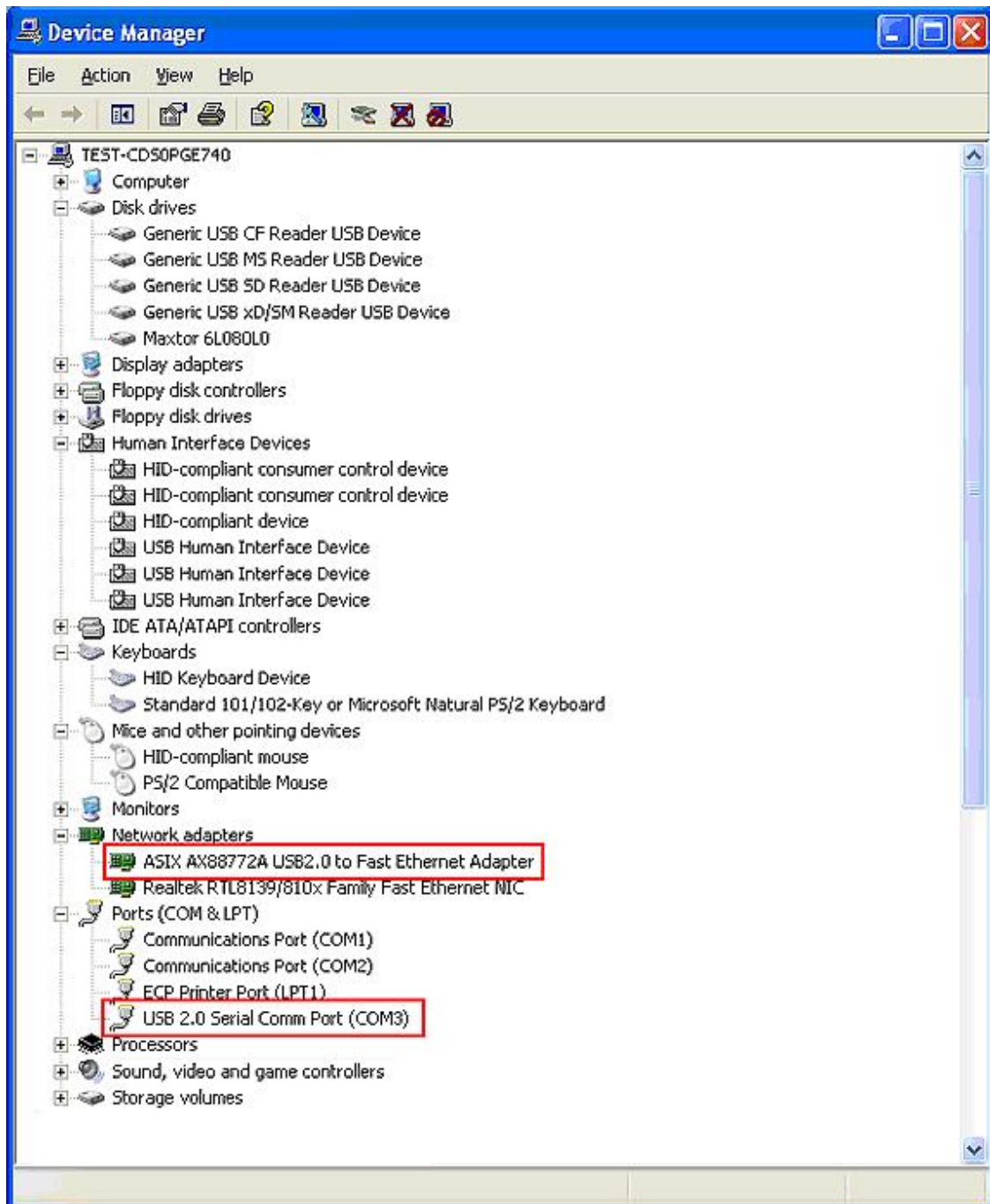
Click next to continue



Click Finish to close the wizard



Upon the completion of the installation of these three procedures, restart the computer in the “Device Manager” will see the following devices.



The end. Thank you for using the product.