



DUAL Docking Station

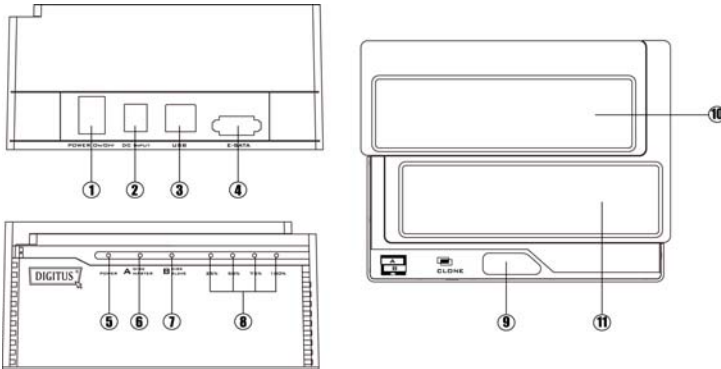
User Manual

DA-70544

Introduction :

DA-70544 is an USB2.0/E-SATA to dual SATA HDD docking station that allows direct data exchanging between SATA II 3.0G and High-speed USB. It supports Offline Clone, which is able to copy data and system files from Source HDD to Target HDD completely via finger touch.

Function Chart :



- | | | |
|-------------------------------|----------------------|------------------|
| 1、 Power switch (ON/OFF) | 2、 DC input | 3、 USB interface |
| 4、 E-SATA interface | 5、 Power indicator | |
| 6、 Bay 'A' indicator | 7、 Bay 'B' indicator | |
| 8、 Clone processing indicator | 9、 Clone button | |

Caution:

1. Once using E-SATA interface, it can only recognize one HDD in PC. If 2 HDDs are inserted in the dock, it can only recognize Bay 'A' HDD. If only insert one HDD in the dock, both Bay 'A' and Bay 'B' can be recognized.

Function :

- * Complies with Serial ATA International Organization:
Serial ATA Revision 2.6
- * Supports SATA 1.5G/3.0G Speed
- * Supports SATA Hot swap
- * Supports SATA Host/Device controller configuration
- * Complies with USB 2.0 electrical specification
- * Supports USB 2.0 High-Speed and Full-Speed
- * Complies with USB Mass Storage Class, Bulk-Only Transport Specification
- * Supports clone function
- * Supports Win 98/ME/2000/XP/VISTA /WIN7
MAC OS 9.X/10.X /Linux

CLONE:

Please note the below conditions before clone:

- Bay 'A' = SOURCE HDD,
- Bay 'B' = TARGET HDD
- TARGET HDD 's capacity **MUST** be larger than SOURCE HDD, otherwise the CLONE cannot be completed. (Same capacity is also not acceptable)

- Before CLONE function starts, make sure the information in **TARGET** HDD is not important; once CLONE started, all information from the SOURCE HDD will be **covered into TARGET HDD..**
- Once the docking is connected to USB interface, the offline Clone will be invalid.

Offline clone

a、 Insert source HDD to Bay 'A'; target HDD to Bay 'B', and then turn on the power



b、 Once the Bays indicators are on, that means DA-70544 is ready for clone.



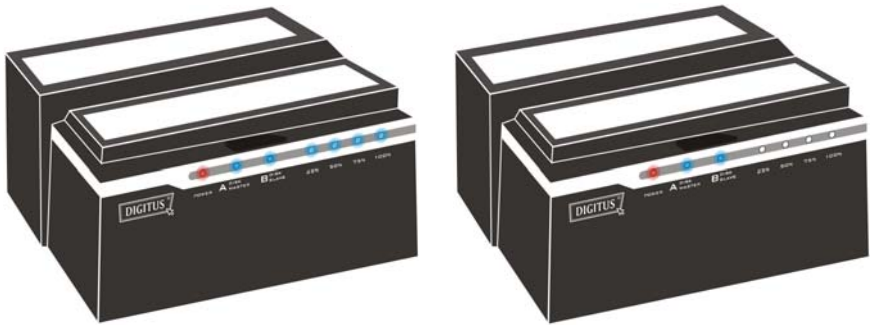
c. Press and hold the clone button for 3 seconds until the indicator light is on, press the button once more for Clone confirmation. Offline clone is starting to process.



d. Clone progress indicator flashes and shows the progress (25%, 50%, 75%, 100%).



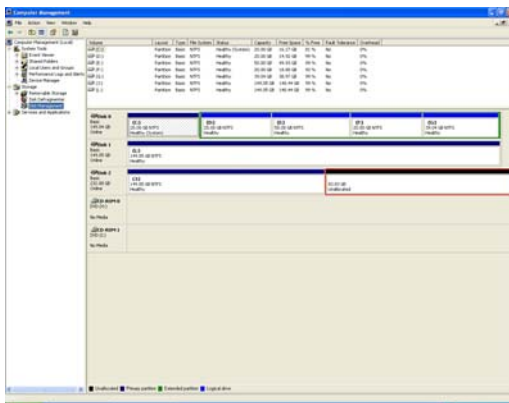
e、 Once clone is finished, all progress indicators will light up.



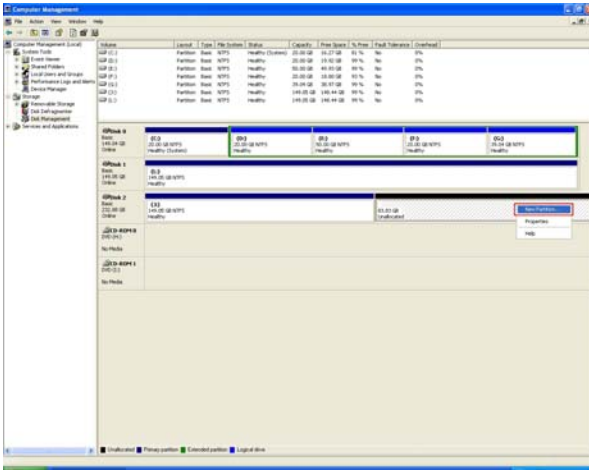
f、 Turn off power and take out the HDD carefully

HDD Partition

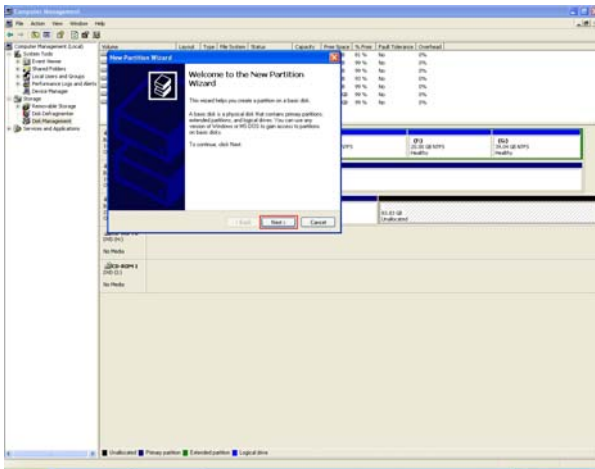
a、 Open Disk management and select the unallocated area



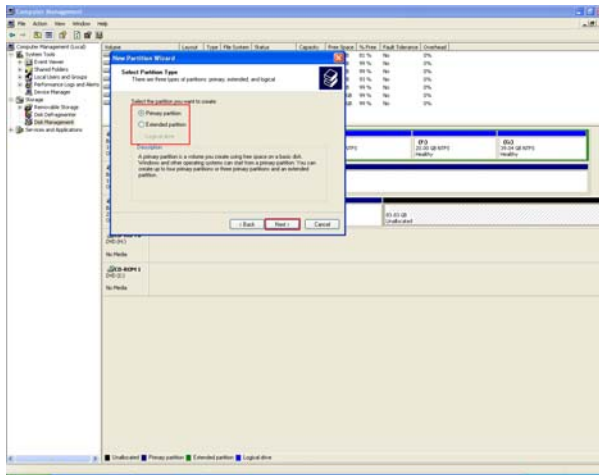
b、 Right click "New partition" for further action



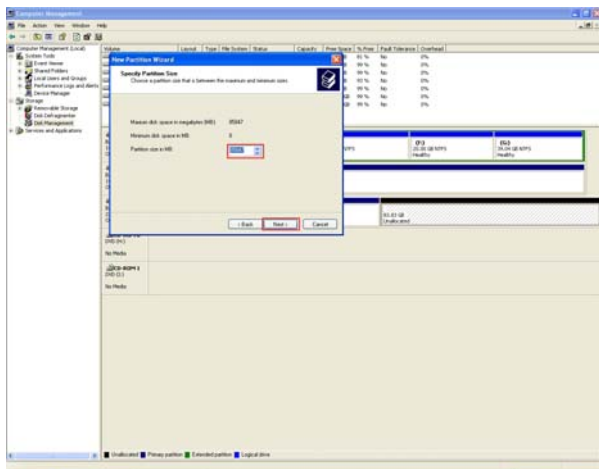
c. "Next"



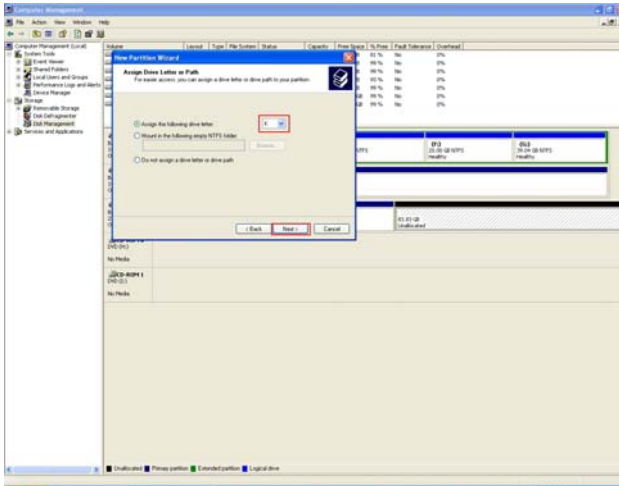
d. Base on your need and click “Next”



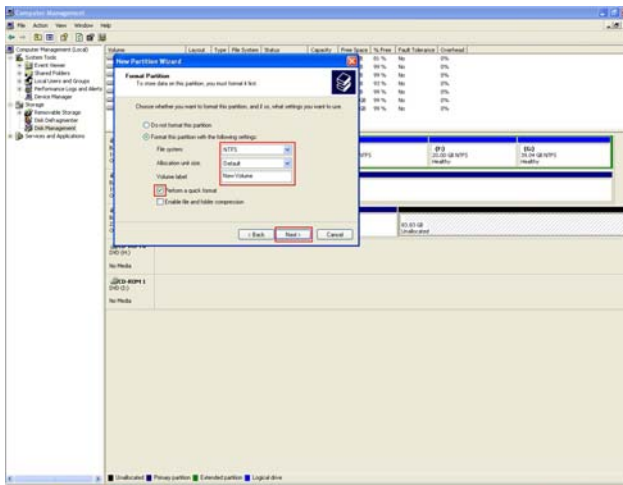
e. Please enter the new partition capacity and click “Next” for further action



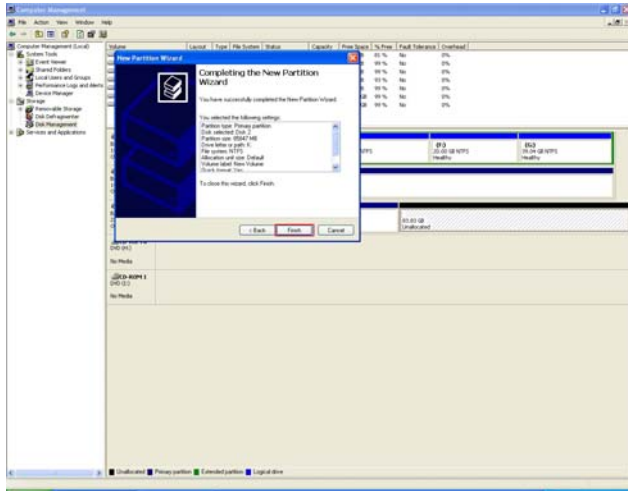
f. Assign the drive letter and “Next”



g. Select “quick format” to format the new partition



h、 Click “finish”



i、 Partition completed, the new partition can be found.

