

Dimension: 29.7*10.35cm



SATA HDD DOCKING STATION



USER Manual
DA-70540-BA Rev. 1-0

Introduction

DA-70540-BA direct inserting all 3.5 or 2.5 SATA HDD into docking unit. the design are simple and easy to install and use Hard Drive.

Features

- All 2.5 or 3.5 SATA HDD Compatible
- USB 2.0 transfer rate up to 480Mbps
- Compact Size docking design
- 12V/2A power adaptor
- LED Indicator

Package Contents

Docking Unit
12V/2A DC adaptor
Cable x 1
Manual x 1

FCC

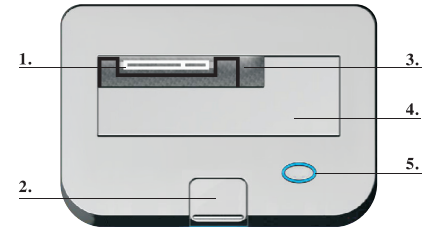
This equipment has been tested and found to comply with limits for Class B digital device pursuant to Part 15 of Federal Communications Commission (FCC) rules.

CE

This equipment has been tested and found to comply with the limits of the European Council Directive on the approximation of the law of the member states relating to electromagnetic compatibility (89/336/EEC) according to EN 55022 Class B

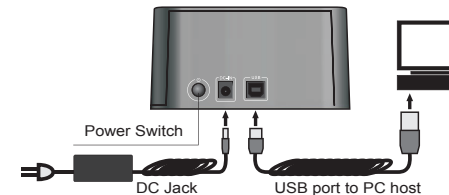
Hardware Installation

1 Top



- 1.SATA connector
- 2.Press Button for released HDD
- 3.For 2.5 HDD
- 4.For 3.5 HDD
- 5.Power and Access LED

2 Back

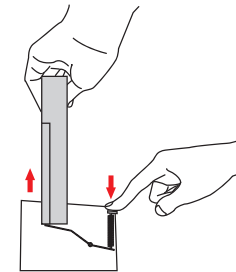


2 Disk Installation



Install 2.5 HDD

Install 3.5 HDD



Patent design for HDD depart from docking unit
(When you press the bottom, please hold the HDD at the same time)



SATA HDD DOCKING STATION



USER Manual DA-70540-BA Rev. 1-0

Introduction

DA-70540-BA direct inserting all 3.5 or 2.5 SATA HDD into docking unit. the design are simple and easy to install and use Hard Drive.

Features

- All 2.5 or 3.5 SATA HDD Compatible
- USB 2.0 transfer rate up to 480Mbps
- Compact Size docking design
- 12V/2A power adaptor
- LED Indicator

Package Contents

Docking Unit
12V/2A DC adaptor
Cable x 1
Manual x 1

FCC

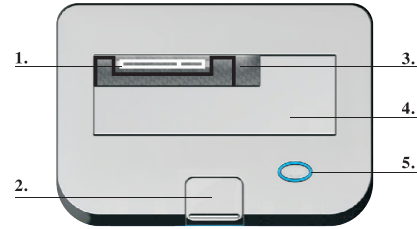
This equipment has been tested and found to comply with limits for Class B digital device pursuant to Part 15 of Federal Communications Commission (FCC) rules.

CE

This equipment has been tested and found to comply with the limits of the European Council Directive on the approximation of the law of the member states relating to electromagnetic compatibility (89/336/EEC) according to EN 55022 Class B

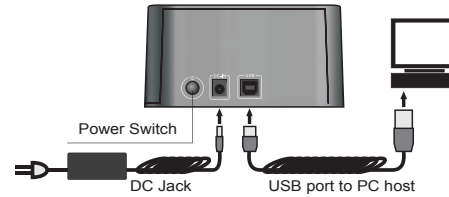
Hardware Installation

1 Top



- 1.SATA connector 2.Press Button for released HDD
3.For 2.5 HDD 4.For 3.5 HDD
5.Power and Access LED

2 Back

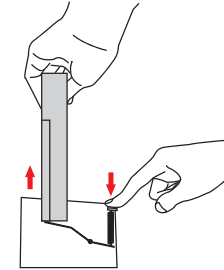


2 Disk Installation



Install 2.5 HDD

Install 3.5 HDD



Patent design for HDD depart from docking unit
(When you press the bottom, please hold the HDD at the same time)