

# User's Guide For USB 2.0 to IDE Adapter

## Table of Contain

[For Windows XP , Windows2000 and Windows ME:](#)

[For Windows98 and Windows98 SE:](#)

[For Macintosh OS 8.6 & 9.X :](#)

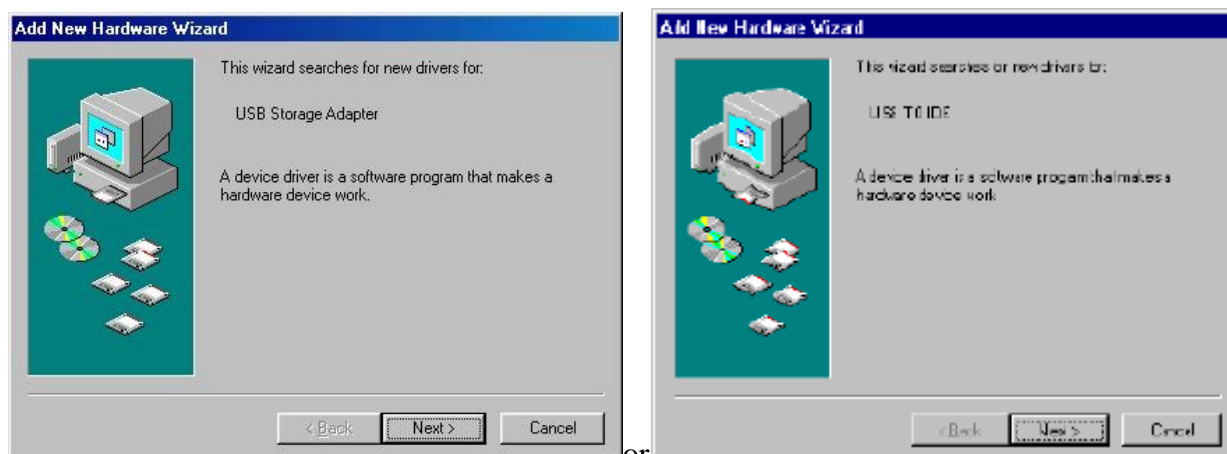
[PnP Tool for Windows](#)

## For Windows XP , Windows2000 and Windows ME:

The Windows XP , Windows 2000 and Windows ME direct support the USB2.0 storage device. It does not need to install any driver for your device.

## For Windows98 and Windows98 SE:

In the very first time you using the USB2.0 device the dialog box "Add New Hardware Wizard" will be appeared. Continue "Add New Hardware Wizard" with click at Next> button.



Select, "Search for the best drivers for your device" and click on the "Next" button.



In the next dialog box WIN98 will note you to specify the driver location of your hardware. Now insert the device driver CD into your CD. Then specify the location as G:\USB20\WIN98\WIN98 (G : \ whichever contain the CD). Click on the OK button to continue.



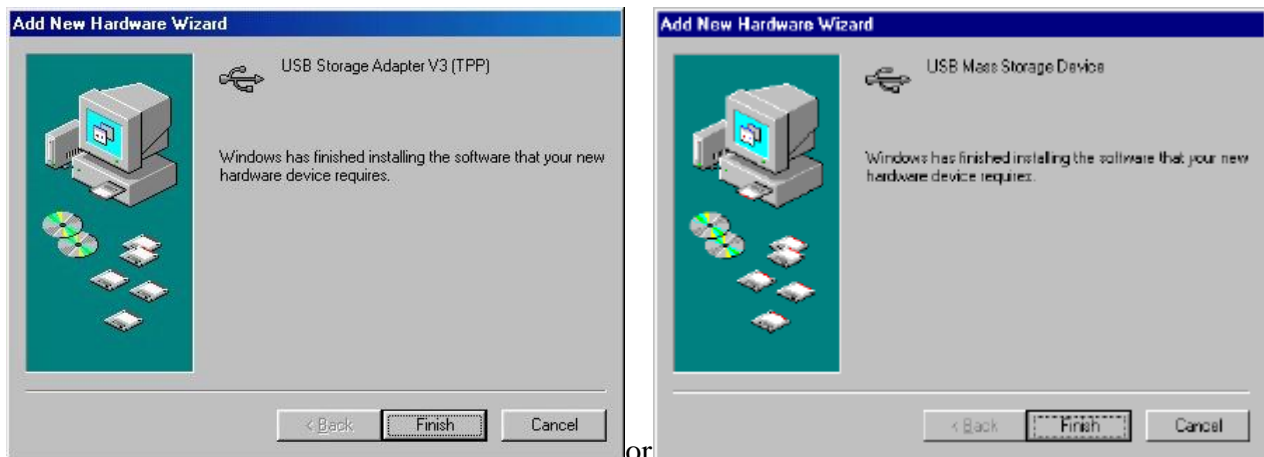
After the "Add New Hardware Wizard" finds a "USB Storage Adapter V3(TPP) " or "USB Mass Storage Device" Click on the "Next" button



or



When the "Add New Hardware Wizard" has finished installing the drivers, click on the "Finish" button



The USB2.0 Device driver is installed to your win98 system, the storage device icon will be added at the “My computer” folder. Now the USB2.0 device is ready for you.

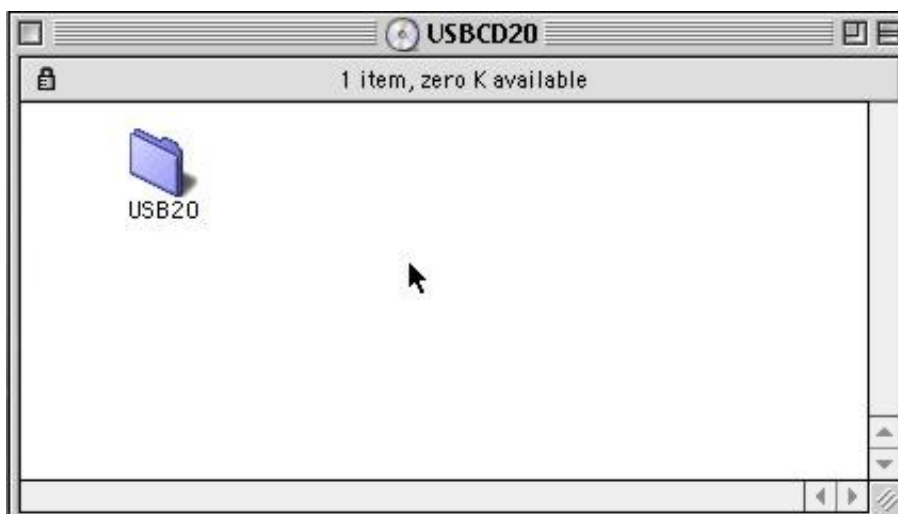
## For Macintosh OS 8.6 & 9.X :

Before the first time you use the USB2.0 device, you need to install the device driver for you MAC OS. Following the steps to install the device driver.

1. Insert the enclosed installation CD into the CD-ROM drive.



2. Double click at the USB20 folder of installation CD

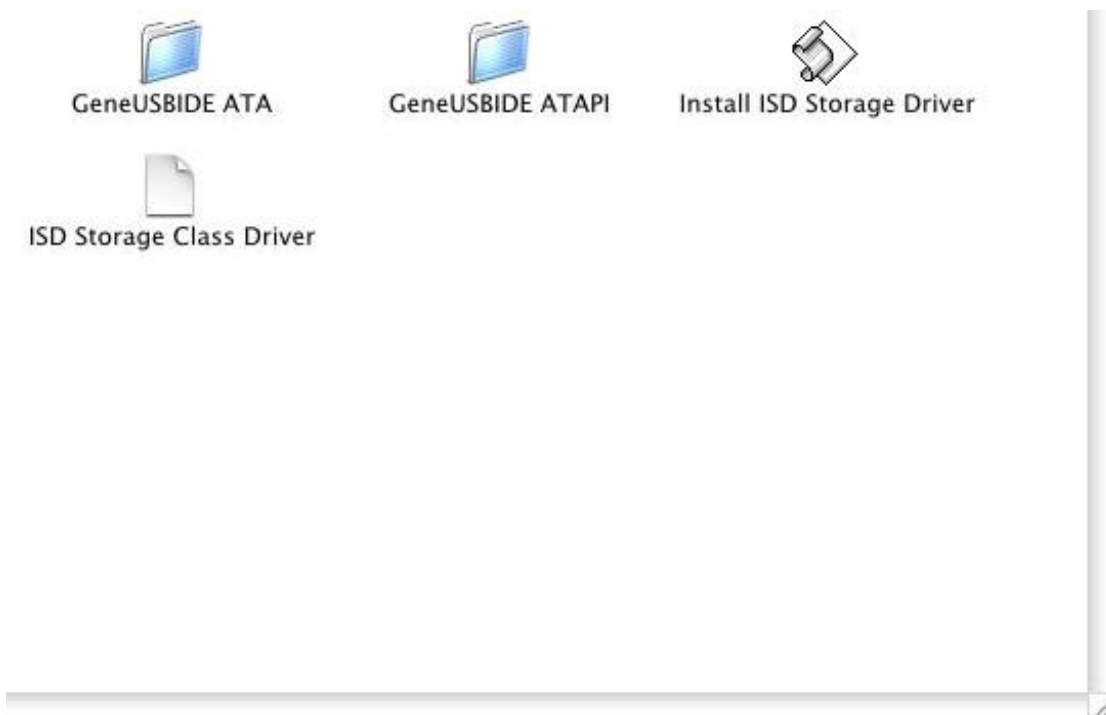


3. You will find the tow install folders for Mac OS. The “MAC OS8.6 & 9.X Installer-J” is for Japanese version installer. The other one is English version for all other language. Click on

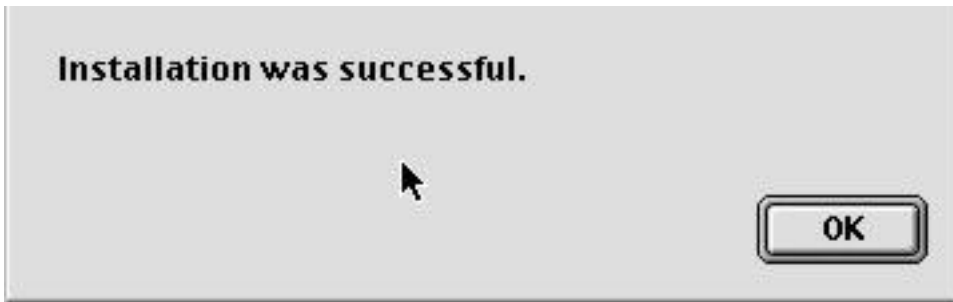
the right folder for your language to continue.



4. Click at the “Install ISD storage Driver” icon to install driver or double click at the GeneUSBIDE ATA, GeneUSBIDE ATAPI” folder of installation CD



4.1. The following icon will popup and let you know the driver is installed into you system. Click at the OK button to finish the installer program.



6. Restart the system to activate the driver. Plug the USB Device into the USB Port. Slide the media in the USB device (Ex. MO. CD or DVD). The system will be recognized the USB device and display the drive icon on the Screen.

### **! Important notice for Mac users**

Before remove the media from the USB Device or unplug the USB Device from USB port, you must drag and drop the drive icon into trashcan.

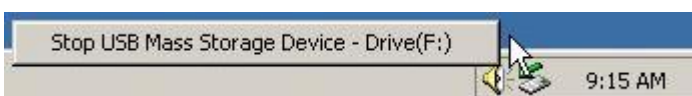
## **PnP Tool for Windows**

For WINDOWS, hot swapping is allowable with more limits. To avoid system failure, always follow the bellow steps to hot UN-PLUG your USB2.0 device in Windows.

- 1 Click on the **“Unplug or ejector hardware”** indicator on the task bar.



- 2 Click on the command bar **“Stop USB Mass Storage -Drive(F:)”** to stop the device your want to remove.



- 3 When the screen prompts, read the instruction carefully. If the system prompts you not to remove the device, DO NOT remove the device. You should exit the present program which access the your USB2.0 device and return to Step 1.



### **USB mode for WIN98**

For WINDOWS 98 the icon for unplug tool is showing at the follow picture. You should follow the bellow steps to stop you 1394+USB device in Windows 98.

- 4 Click on the **“Safely Remove Storage Device”** indicator on the task bar.



- 5 Click on the command bar **“Safely Remove Maxtor 3 2049H2-Driver(F:)”** to stop the device you want to remove. Maxtor 3 2049H2 is the device name which you are using.



- 6 When the screen prompts, read the instruction carefully. If the system prompts you not to remove the device, DO NOT remove the device. You should exit the present program which access the your USB2.0 device and return to Step 1.

