



USB 2.0 Sharing Switch



User Manual

Model: DA-70135-1 & DA-70136-1

Getting started with USB 2.0 Sharing Switch

Thank you for choosing the USB 2.0 Sharing Switch.

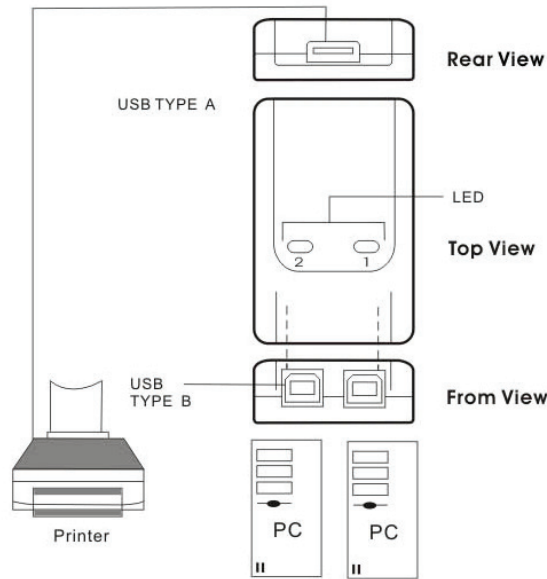
Today, USB connections can be found in various devices, from PC cameras to scanners, printers, Hubs, and KVM switches, As USB technology continues its reign in the computer peripheral market, USB 2.0 Sharing Switches offer a completely cost-effective solution for the small business and home user to manage their network layout.

These sharing switches are ideal for multiple PCs to share one USB device. The USB 2.0 sharing Switch has designed a user-friendly interface that makes device sharing easier. No more extra complex driver download procedures are necessary. Only a few clicks and you can start to explore the USB adventures.

Installation

DA-70135-1

2 x USB B Type connectors connect to each PC and 1 USB A Type connector attaches to the USB device(s).

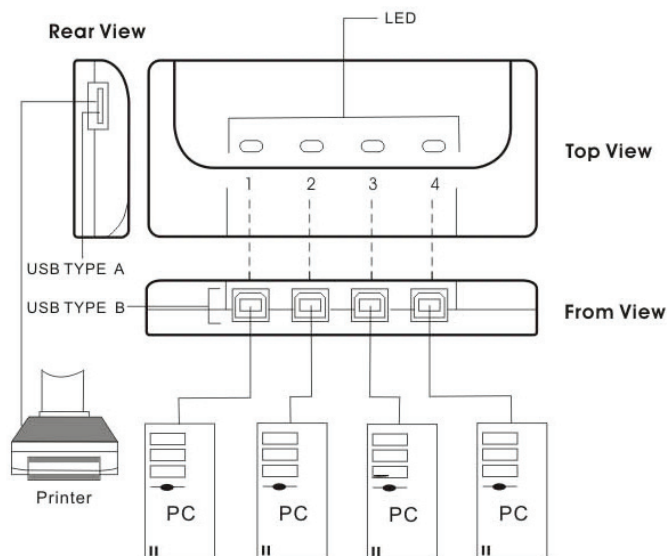


PC ports	2
PC port & Device port	1 USB A Type / 2 USB B Type
Module Dimension (mm)	69 × 42 × 20 (mm)

Installation

DA-70136-1

4 x USB B Type connectors to each PC and 1 USB A Type connector attaches to the USB device(s).



PC ports	4
PC port & Device port	1 USB A Type / 4 USB B Type
Module Dimension (mm)	76 × 65 × 20 (mm)

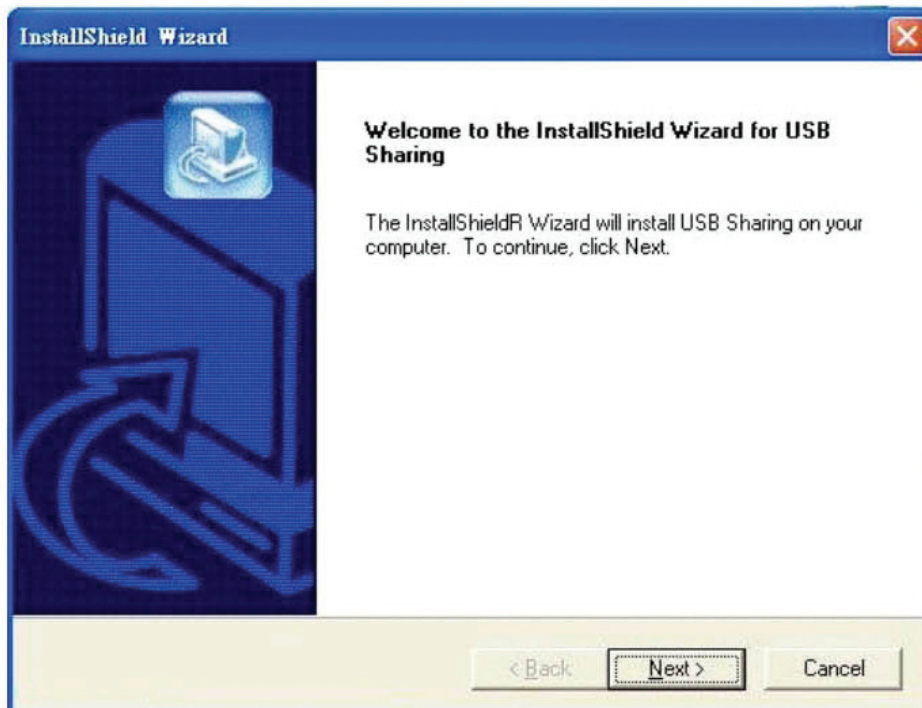
Software Installation

First insert the CD (AP Software) into your CD-ROM drive. The language dialog box will pop up.

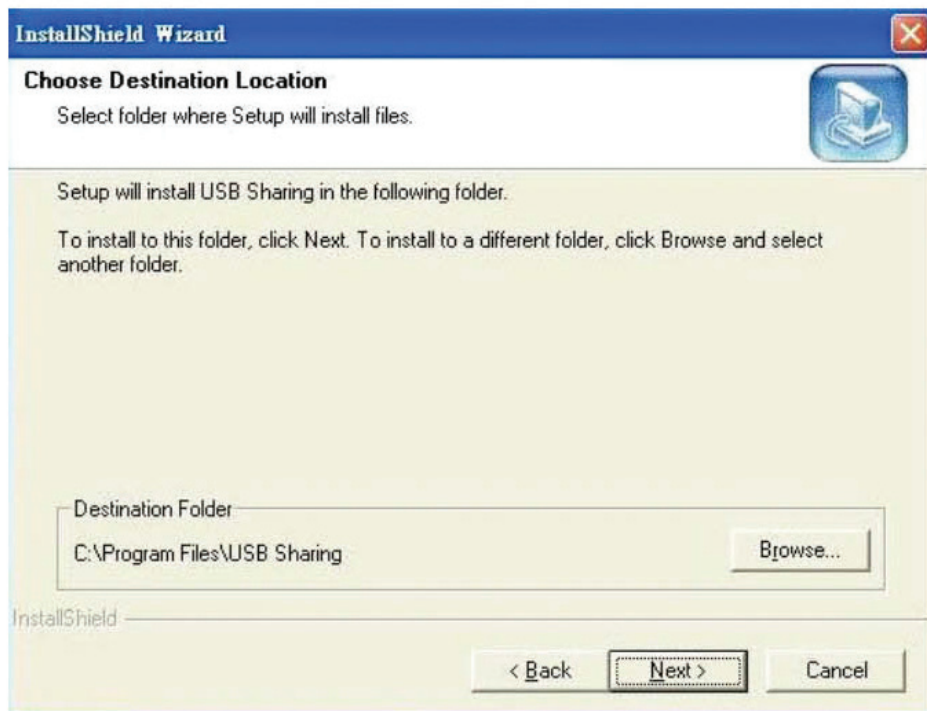
If installation does not start automatically, start Windows Explorer, navigate to your CD-ROM drive and double-click the setup.exe file.



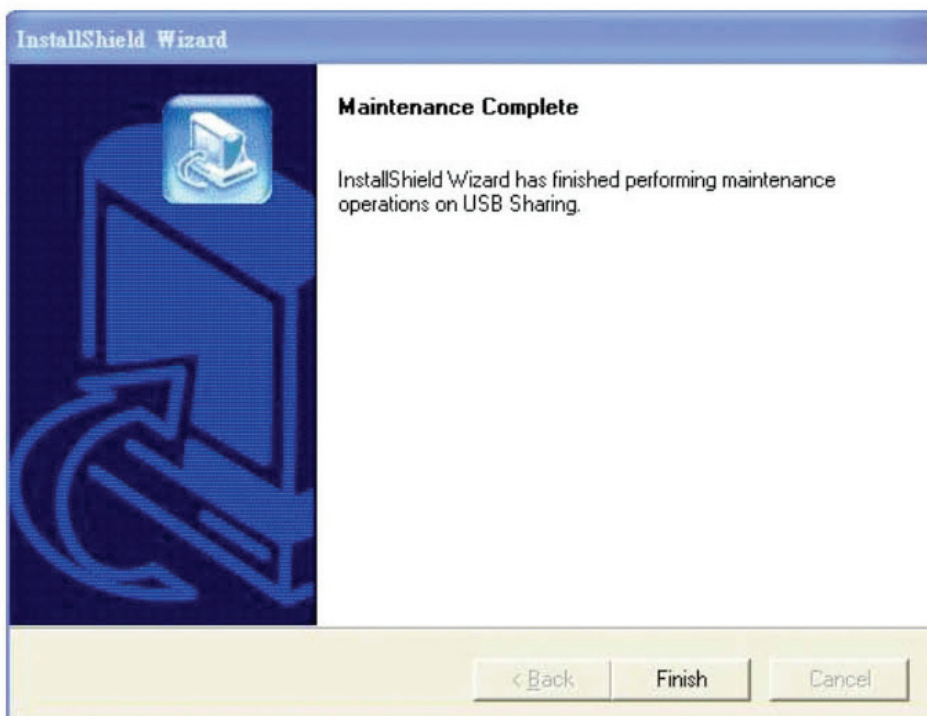
Confirm the English (or the required languages) is selected as the installed language, and then click **OK**. The installation setting dialog box is displayed.




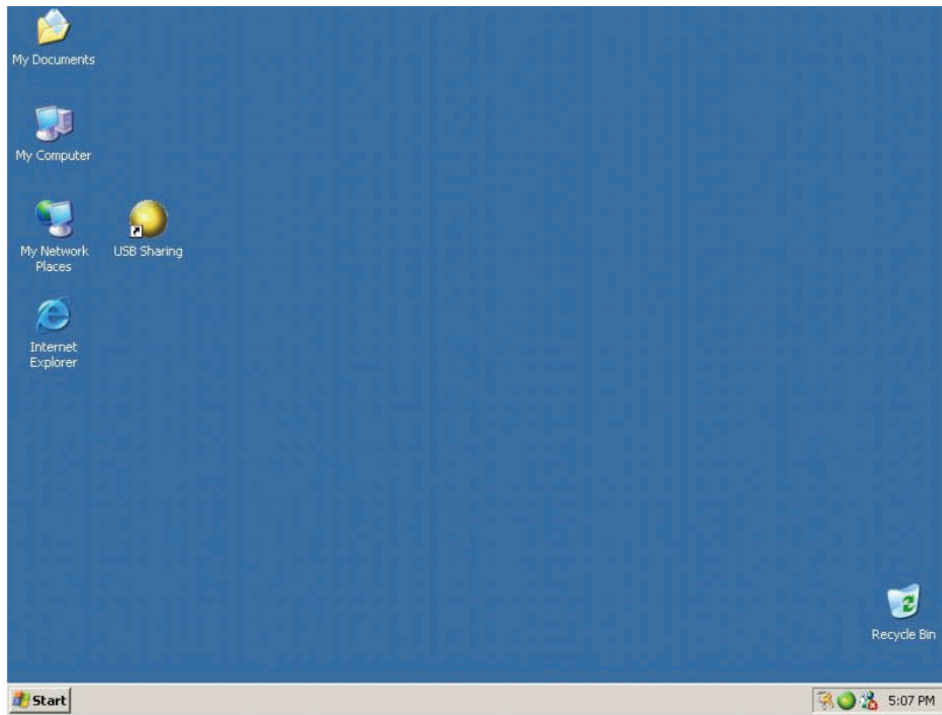
The default directory is **C:\Program Files\USB Sharing**. If the drive letter where you would like to install is different from C, browse the drive instead. Click **“Next”** to confirm the change.



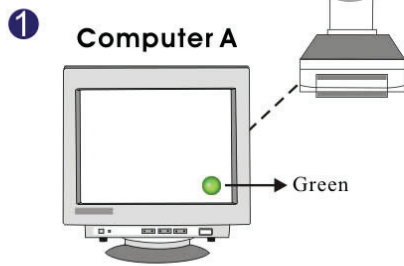
When the Installation successful, the dialog is display, click **“Finish”** to close all of the open windows, and then reboot your computer.



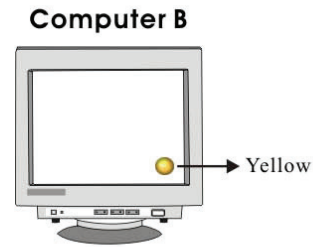
After your computer is rebooted, there will be as shortcut  on your desktop and a icon on the lower right corner of your screen.



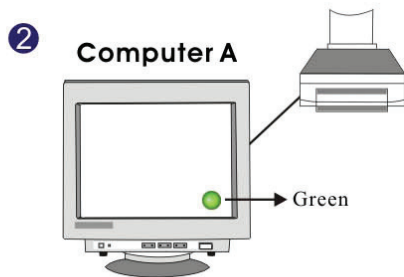
Operation



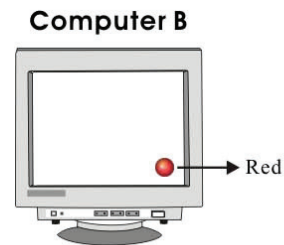
Computer is connected to device; ready to use device.



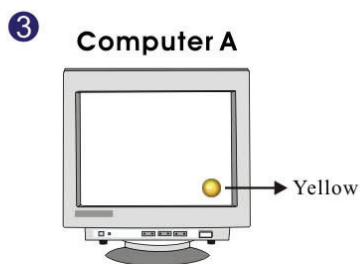
In order for computer to become ready to use the device, simply press Ctrl + F11 or single right mouse click on the icon.



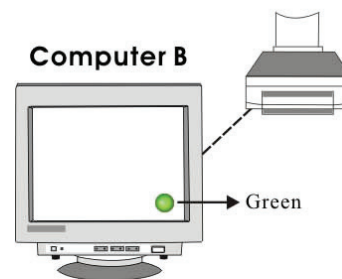
The device is actively being used by computer A.



Computer A has occupied USB device, not allow switching between PCs at this moment.

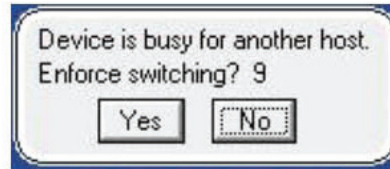


In order for computer to become ready to use the device, simply press Ctrl + F11 or single right mouse click on the icon.



Computer is connected to device; ready to use device.

It is important for end users to realize that storage devices such as, external hard drives, and printers, will continue to send signals back and forth to your computer when ever they are connected. While this is happening, USB auto sharing will be confused by this signal and an indication icon will appear red and blinking. If you would like to have the controlling power of USB auto sharing without device busy considerations, simply press “**Ctrl**” + **F11**. The confirmation message will then pop up. Simply click “**Yes**” to confirm the switch.



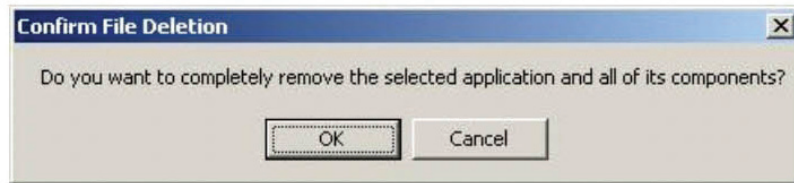
You still can switch from one computer to another even though the application is not installed (Mac Linux OS). When the LED light is lit that indicates the PCs are already connected with the device. Please be aware that switching computers by the panel Select button will force the device to switch with the computer.

Note: Please refer to read me file for more detail if you have other questions.

Software Un-installation

1. In order to completely remove the software application from your PC, please insert the CD-ROM into your CD-ROM drive. Confirm the default language in English and click **OK**. The file deletion dialog will appear and click **OK** to confirm.

2. Also, you can uninstall the software from “**Add or Remove Programs**” under Control Panel. Click “**Add or Remove**” button and the Choose Setup Language box will display. Confirm the default language in English and click **OK**. The file deletion dialog box will appear and click **OK** to confirm.



Click “**Finish**” The software un-installation has been completed.

