



# SATA HDD MOBILE RACK



DA-50214-A / DA-50215  
User Manual

### I. Feature:

Compatible Serial ATA Specification  
Suitable for 3.5" Serial ATA HDD  
Transfer rate max available up to 150MB/sec; 300MB/sec  
Hot plug capability  
Options available for Slide Switch/Key-lock/Power Switch  
Convenient data administration & sharing  
Secure your data  
Easy access handle designed  
Built rear cooling fan (Optional)  
Dimension:222x149x42MM

### II. Package Content

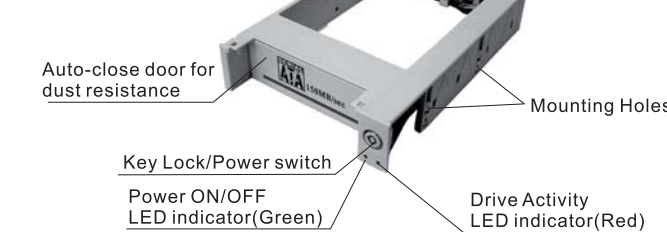
Before installing the Mobile Rack, verify that the following items are included in the package. If any parts are damaged or missing, please contact your local dealer or sales representative immediately.  
1. One SATA Mobile Rack included Receiving Frame & Inner Case  
2. One plastic bag included eight screws, a label and 2 keys(for key-lock models only).  
3. One User's Manual.

### III. Hardware Installation

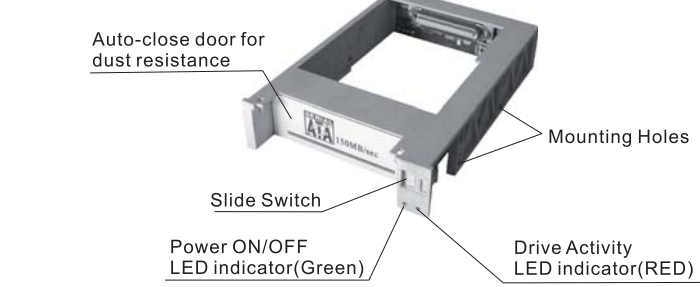
#### 1. Mobile Rack components:

##### a.Receiving Frame

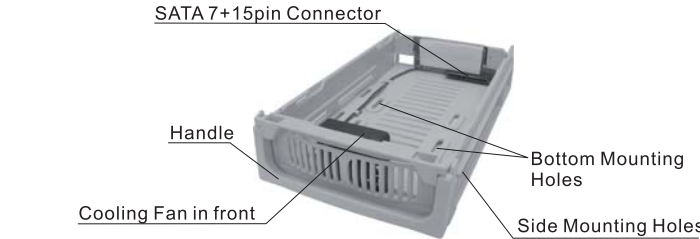
##### • Key-Lock Type



##### • Slide Switch Type



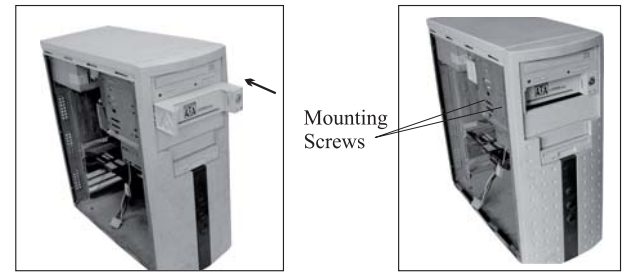
##### b.Inner Case



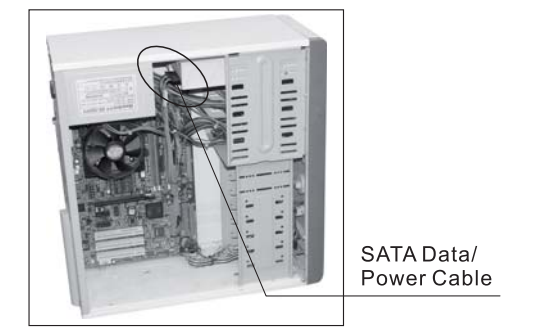
#### 2. Installing the Mobile Rack Receiving Frame.

1.Power OFF to your computer and any other connected peripheral devices.  
Discharge any static electricity build up in your body by touching a grounded metal surface such as the computer case, if plugged in. During installation procedures, avoid any contact with internal parts.  
2.Unplug the power cord from the back of the computer.  
3.Remove the computer's cover.  
4.Remove the computer's front cover plate from the 5.25"drive bay before you install your Mobile rack into.  
5.Lift the handle and pull the Inner Case out from the Receiving frame.

6.Slide the Receiving Frame into the 5.25" drive bay from the front to the back, make sure the Receiving Frame mounting holes align with the drive bay's mounting holes.  
Secure with the supplied mounting screws(two on each side).



7.Find one SATA power supply of the computer, and insert it into the male 7+15pin connector at the back of the Receiving Frame.  
8.Find one SATA data cable and plug it into the 7+15pin connector in the back of the frame  
9.Replace the computer's cover and reconnect the power and other external cabling.

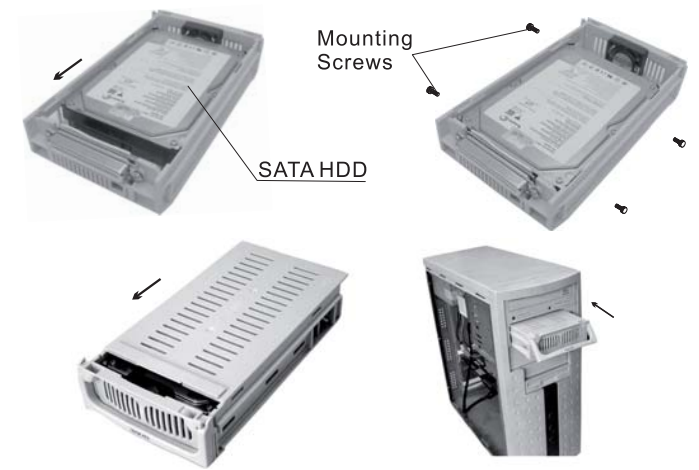


#### 3. Mounting a Hard in the Inner Case:

Proceed with the following steps to install a 3.5" SATA Hard drive in the Mobile Rack Inner Case.  
1.Slide the Inner Case cover out of the Inner Case base.  
2.Place the SATA HDD into the inner case carefully .  
3.Slide the SATA HDD to the 7+15pin SATA connector carefully until joint it tightly.

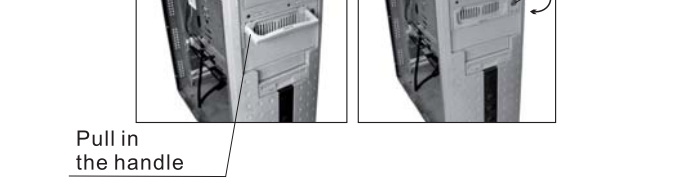
If you are installing a new Hard Drive into the Mobile Rack, you need to configure the drive before you install it.

4.Tight the HDD with screws from side mounting holes.  
5.Slide the inner Case cover back onto the inner case base.  
6.Push the Inner Case back into the Receiving Frame and turn on the lock with the key.



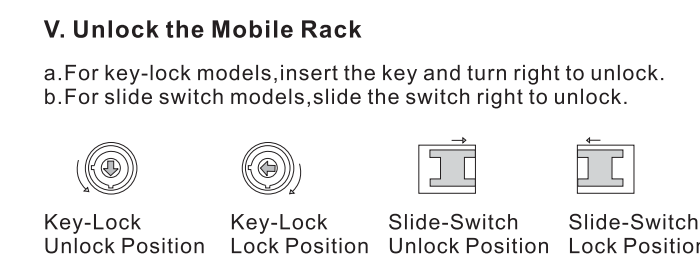
#### IV. Lock the Mobile Rack

a.For key-lock models,insert the key and turn left to lock.  
b.For slide switch models,slide the switch left to lock.



#### V. Unlock the Mobile Rack

a.For key-lock models,insert the key and turn right to unlock.  
b.For slide switch models,slide the switch right to unlock.



#### VI. About HOT Plug

As a new interface, Serial ATA support hot plug, if your PC have mounted two Serial ATA Hard Disk or above, you can use this function follow this step:

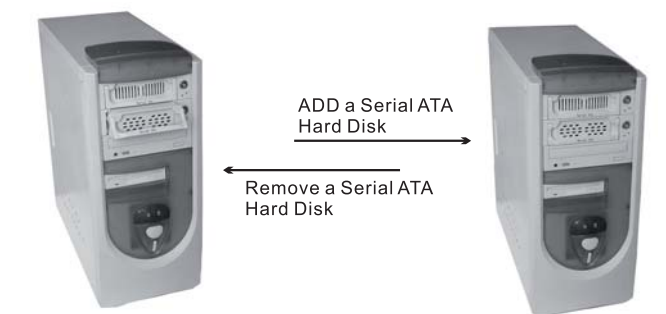
##### A. Remove a Serial ATA Hard Disk:

1.Open your PC system.  
2.double click [My Computer].  
3.Select one Disk belong to the Serial Hard Disk, and click the disk

icon with right mouse button and select [Attribute]----[Hardware]; and select the Serial ATA hard disk which you want to remove, select [Attribute], system will display default interface, in the normal window, choose [Stop use device] in the white window, then all the Disk belongs the Serial Hard Disk will disappear.  
4.Now you can remove the inner case from the case.( or plug out the cable which connect to the Serial hard disk, and take it away).

##### B. Reuse (add) a Serial ATA Hard Disk

1.Pull the second inner case(which has installed a SATA HDD) in the frame or connect the SATA power/data cable to the Serial ATA Hard Disk).  
2.Double click [My Computer], system will display all Disk in the window.  
3.Select anyone Disk drive icon of the system HDD such as [C:], and click it with right mouse button, choose [Hardware]----[Attribute], in the normal window, choose [Use device] in the white window, all the Disk of the Serial ATA Hard Disk will display in the system windows.  
4.Now you can use the second Serial ATA Hard Disk .



### Warning

- Do Not remove the Inner Rack while the Hard Drive is busy, this may cause damage to your HDD
- The key-lock must be in the lock position when in use. This prevents unexpected removal while working
- Always turn the system power OFF when removing or inserting the Inner Rack

### Disclaimer

All the information in this document is subject to change without prior notice The manufacturer makes no representations or any warranties regarding the Contents of this manual. The information contained in this manual is provided for the general use by the customers. No part of this document may be reproduced or transmitted in any form by any means without the express written permission of The manufacturer. All brand names and product names used in this document are trademarks or registered trademarks of their respective holders.



Made In China