



CAR/WALL MOUNT ADAPTER FOR iPad®

Quick Installation Guide

DA-20001

Car Installation

① Install Car/Wall Mount Adapter



Feed strap into Car/Wall Mount Adapter



Position on headrest

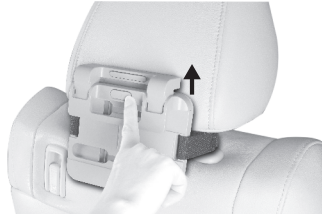


Close velcro strap

② Mount DIGITUS® Aluminium Stand for iPad® onto Car/Wall Mount Adapter



Locked position



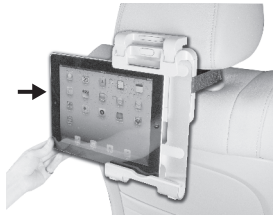
To unlock



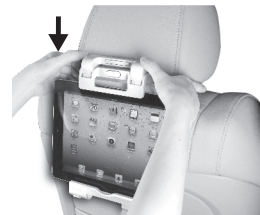
landscape
portrait

Fit Aluminium Stand into slot
(upper for landscape, lower for portrait)

③ Mount iPad®



Slide iPad in



To lock iPad, use both thumbs to firmly push clamp downwards until it clicks



Locked and secured position
Ready for use in car



To unlock



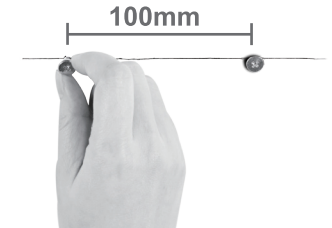
Slide iPad out

Wall Installation

1. Install Car/Wall Mount Adapter



Position, level and mark
Car/Wall Mount Adapter on wall



Install screws on wall



Match screws with
mounting holes



Locked position

For the rest, see car installation ② and ③

Introduction

Congratulations, you are about to experience how amazing Car/Wall Mount Adapter for iPad® can keep your iPad up in your car, or on your wall.


Compatibility

iPad 2 only

What's Included

DIGITUS® =  DA-20001

strap = 

screws = 

Specifications

Car/Wall Mount Adapter for iPad® to be mounted on headrest in car, or on wall at home/office

Safety

Warning: failure to follow safety instructions could result in injury or damage to iPad or other property

In Car

Install Car/Wall Mount Adapter only on headrest facing backseat passengers
Do not install Car/Wall Mount Adapter in area over or near air bag deployment area
Do not use Car/Wall Mount Adapter until it is in locked and secured position as shown in this guide

On Wall

Do not use Car/Wall Mount Adapter until it is in locked and secured position as shown in this guide